

WOOD GUARD RAIL REQUIRED

Culvert Station	Left	Right
393171	14'	14'

NEW CAST IRON PIPE CULVERTS REQUIRED

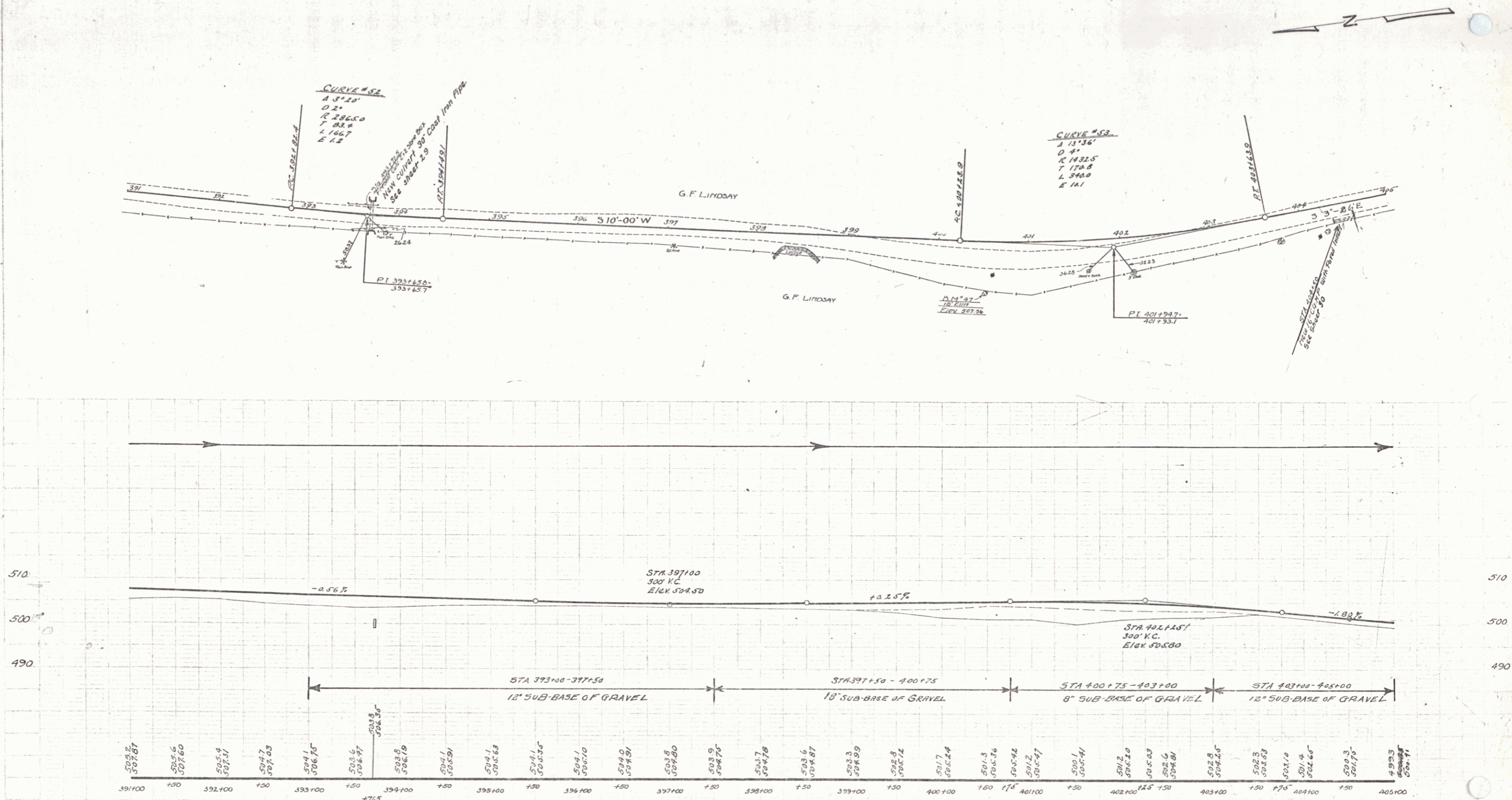
Station	Diam.	Length	Material
393171	30"	36'	3.2 5B

NEW DRIVEWAY PIPES REQUIRED

Station	Diam.	Length	Material
401150	16"	277'	2.1 G.3d

FED. ROAD STATE PR. DIST. NO. 15-G 1929 2.5 97

B.D. Wood 1928
 E. Flanagan 1928
 27 Wood Station 1928



SERIES PR # 15-G
Sheet 25 of 97