

Wood Guard Rail Required

Station	Left	Right
382+00	24	-
383+47	-	24

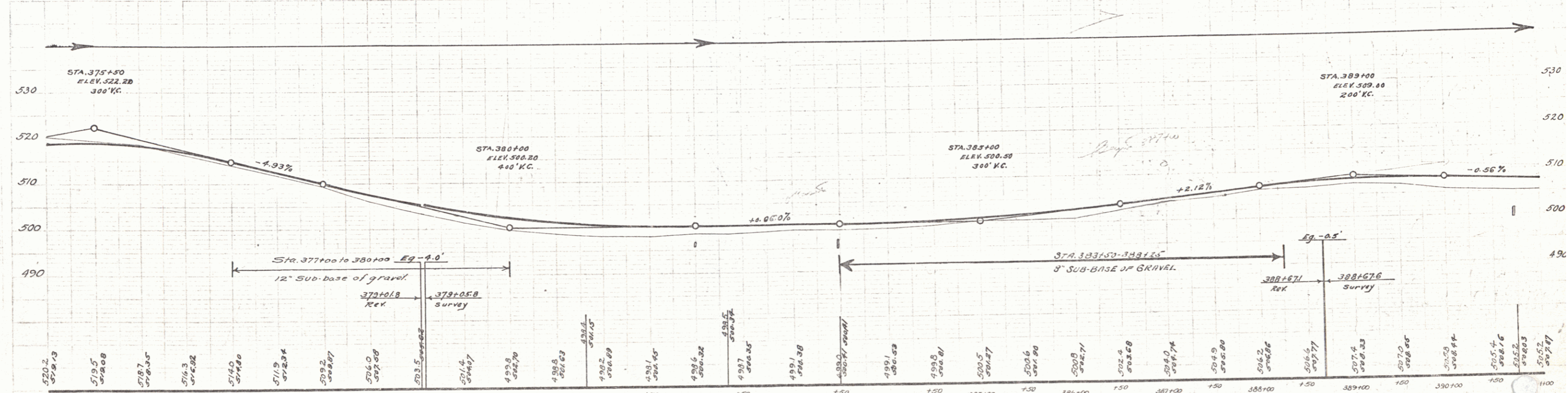
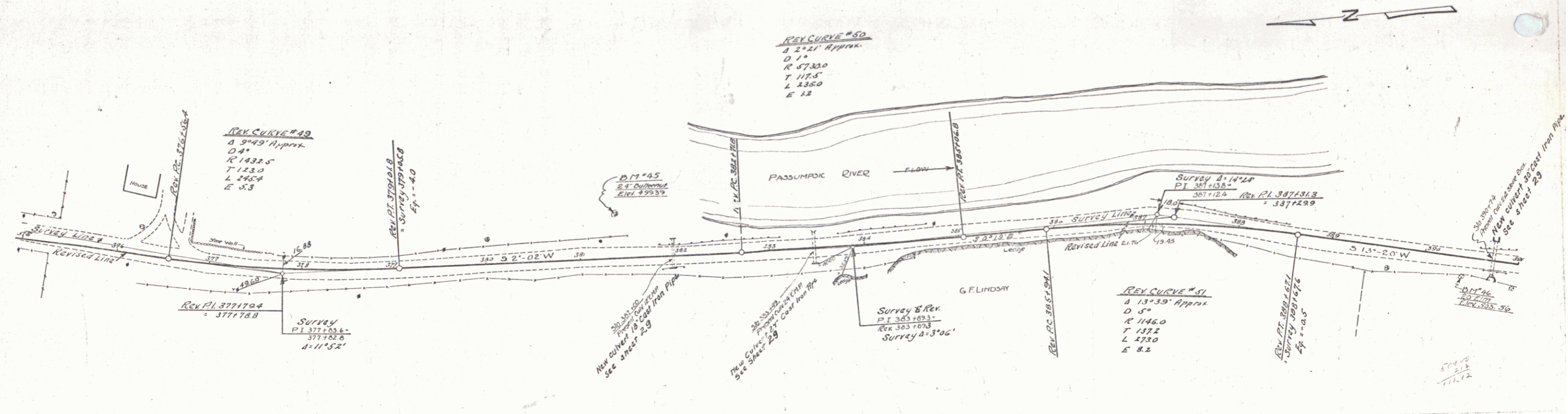
Cable Guard Rail Required

Station	Left	Right
381+88-389+00	712	-
390+15-390+85	-	69

New Cast Iron Pipe Culverts Required

Station	Length	Size	Material
382+00	10'	36"	Cast Iron
390+73	30'	36"	Cast Iron
393+47	24'	36"	Cast Iron

STATE PROJECT NO. 15-6 1963 I-4 97



D.M. # 45 SPIKE IN ROOT 24" BUTTERNUT, 26 FT. LT. OF 379 381+41 - ELEV. 499.39
 D.M. # 46 SPIKE IN ROOT 20" ELM, 18 FT. RT. OF 379 390+42 - ELEV. 503.56

SECTION # 15-6
 Sheet 84 of 97