

WOOD GUARD RAIL REQUIRED		
Culvert Station	Left	Right
361+98	32	24
366+05	-	24

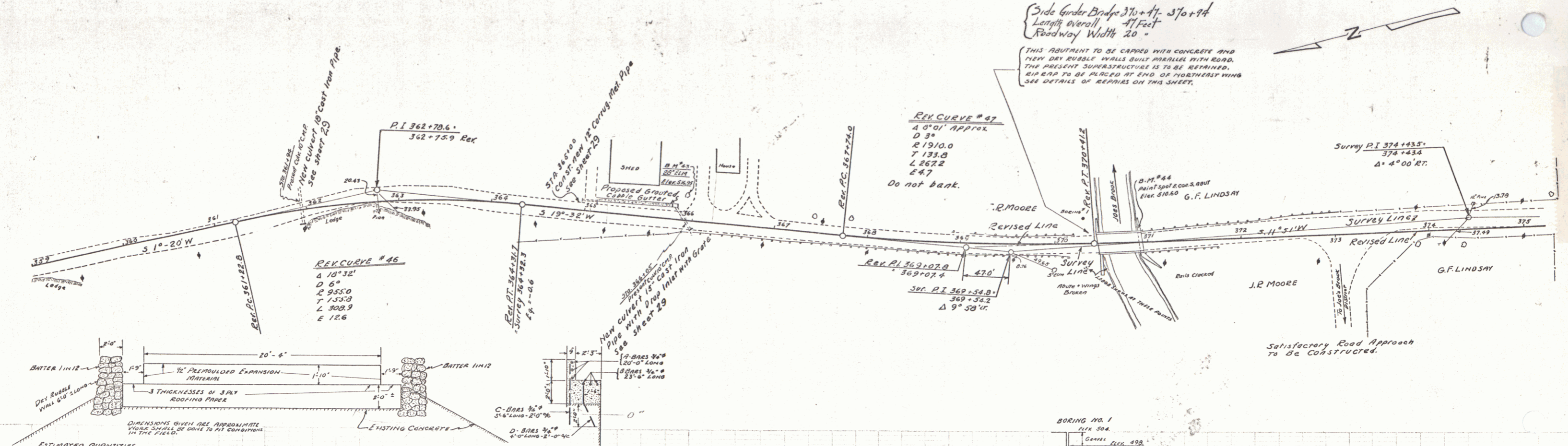
CABLE GUARD RAIL REQUIRED		
Stations	Left	Right
369+92-370+40	-	48'
369+92-370+40	40'	-
370+94-371+02	-	20'
370+94-371+02	20'	-

NEW CAST IRON PIPE CULVERTS REQUIRED				
Station	Long	COCA	Steel	D. Grate
Station	Dim.	Length	cu yds.	lbs.
361+94	18' x 39"	1.5	1.5	17
366+05	15' x 32"	1.4	1.4	99

NEW DRIVEWAY PIPE CULVERTS REQUIRED			
Station	Side	Diam.	Length
Station	Side	Diam.	Length
365+00	Lt	12"	16'
365+00	Rt	12"	16'

GRAVELLED COBBLE GUTTER REQUIRED			
Stations	Side	Width	Area
Stations	Side	Width	Area
365+10-365+94	Lt	3.0 ft	70 sq yds.
365+10-365+94	Rt	3.0 ft	70 sq yds.

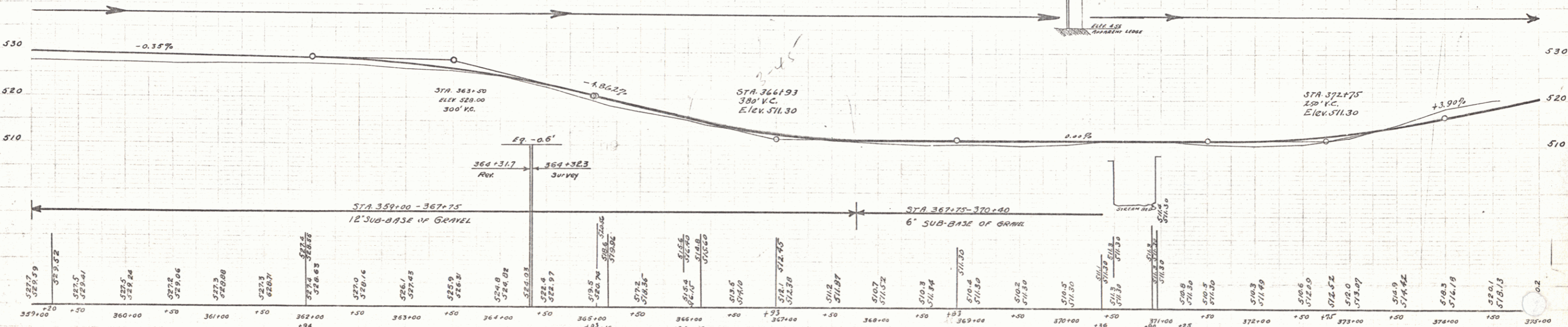
FED. DIST. NO.	STATE	FED. AID	FISCAL YEAR	SHEET NO.	TOTAL SHEETS
3	V	15-6	1929	23	97



ESTIMATED QUANTITIES

- CONC. CLASS "A" 7.0 CY
- REIN. STEEL 380 LBS.
- DRY RUBBLE MASONRY 0 C.Y.
- RIP RAP 10 BANK PRODUCTION 10 C.Y.

**DETAIL OF REPAIRS
BRIDGE AT STA. 370+75**



D.M. # 43 SPIKE IN ROOT OF 20" ELM, 23 FT LT. OF STA. 366+06 - ELEV. 516.95
 D.M. # 44 PRINT SPOT ON EAST CORNER OF SOUTH ABUTMENT, 12.5 FT LT. OF STA. 370+90 - ELEV. 510.60

SERIES PR 75-6
Sheet 23 of 97