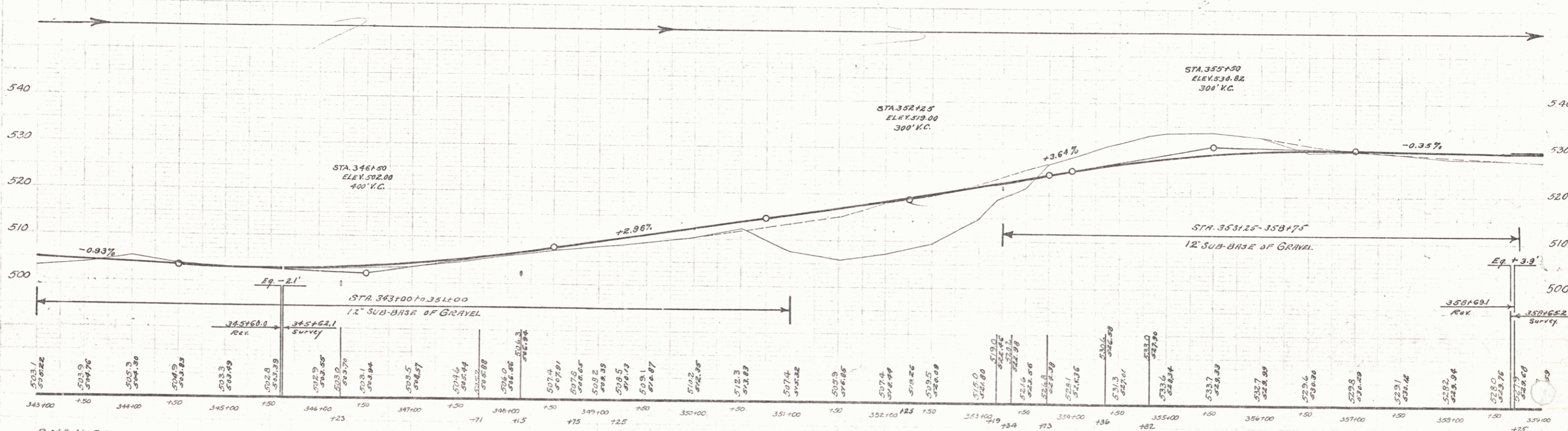
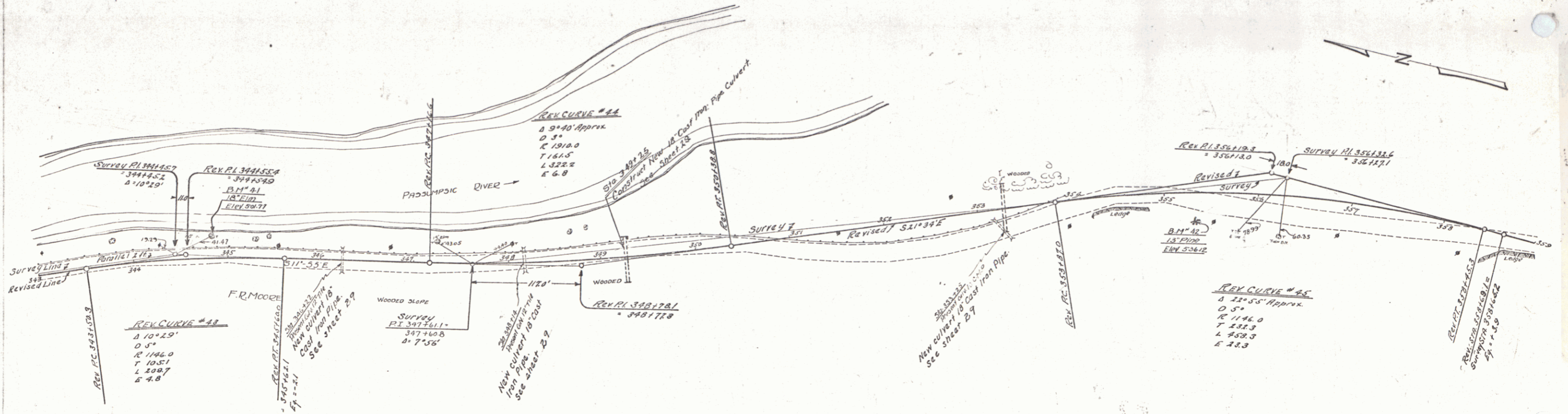


WOOD GUARD RAIL REQUIRED		CABLE GUARD RAIL REQUIRED	
Station	Left	Right	Station
346+22	24	24	343+00-343+77
348+15	24	24	
353+19	24	24	
349+25	24	24	

NEW CAST IRON PIPE CULVERTS REQUIRED			
Station	Length	Grade	Notes
346+22	18'	0.0	1.5' 44'
348+15	18'	0.0	1.5' 44'
353+19	18'	0.0	1.5' 44'
349+25	18'	0.0	1.5' 44'

STATE OF MISSISSIPPI  
 ROAD AND RAILROAD DISTRICT NO. 1  
 PROJECT NO. 156  
 SHEET NO. 28 OF 97



B.M. # 41 SPIKE IN TRUNK OF 18" ELM, 19.3 FT. LT. OF STA. 344+13.3 - ELEV. 501.77  
 B.M. # 42 SPIKE IN FOOT OF 13" PINE, 2.5 FT. RT. OF STA. 355+3.1 - ELEV. 536.12

DESIGNED BY 156  
 SHEET NO. 28 OF 97