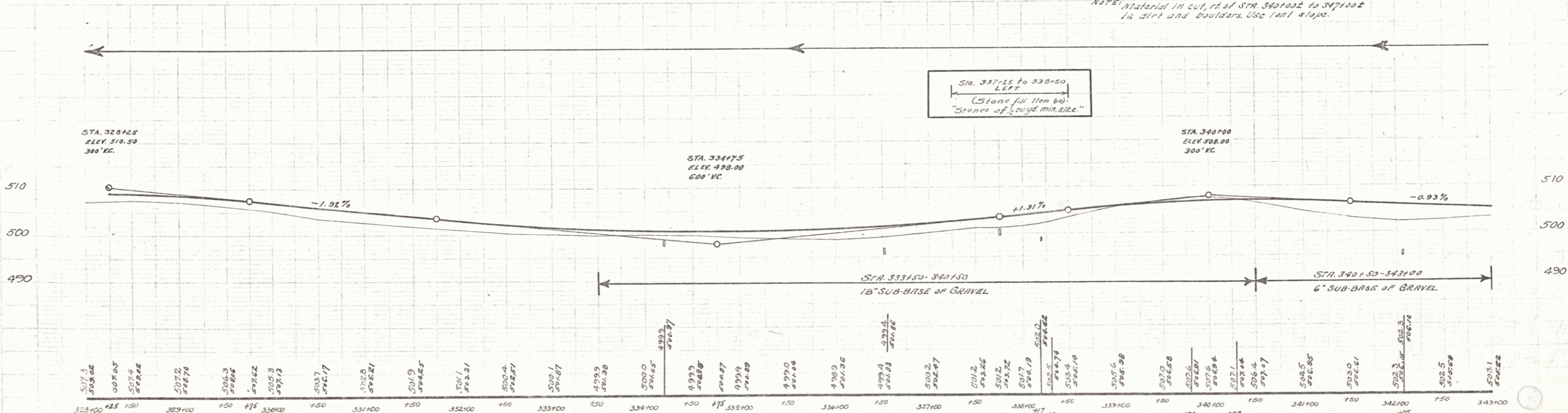
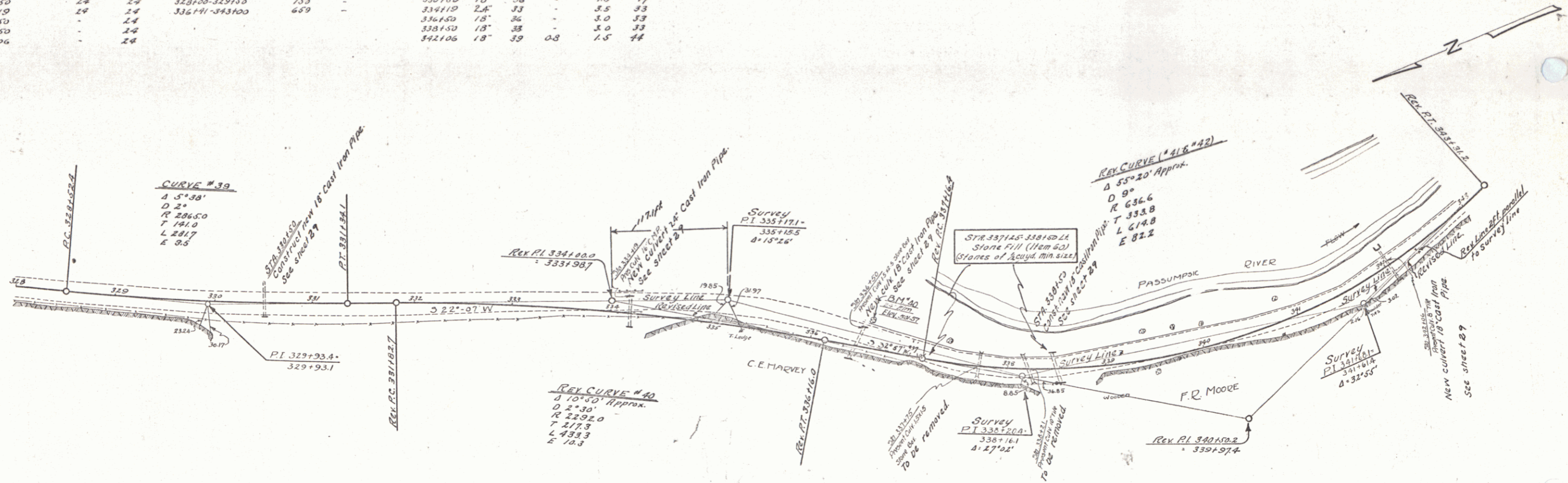


WOOD GUANO RAIL REQUIRED			SCALE GUANO RAIL REQUIRED			NEW CAST IRON PIPE CULVERTS REQUIRED			
Culvert Station	Left	Right	Stations	Left	Right	Station	Diem.	Length	Cost
330+50	24	24	328+00-329+50	150	-	330+50	18"	36	8.5
334+50	24	24	336+00-343+00	600	-	334+50	18"	36	8.5
336+50	-	24	-	-	-	338+50	18"	36	8.5
338+50	-	24	-	-	-	342+00	18"	36	8.5
342+00	-	24	-	-	-				



DM #40 Spike in foot of 24" Elm, 13.8 ft. of DM 336+38 - Elev 501.57

SHEET 21 of 27