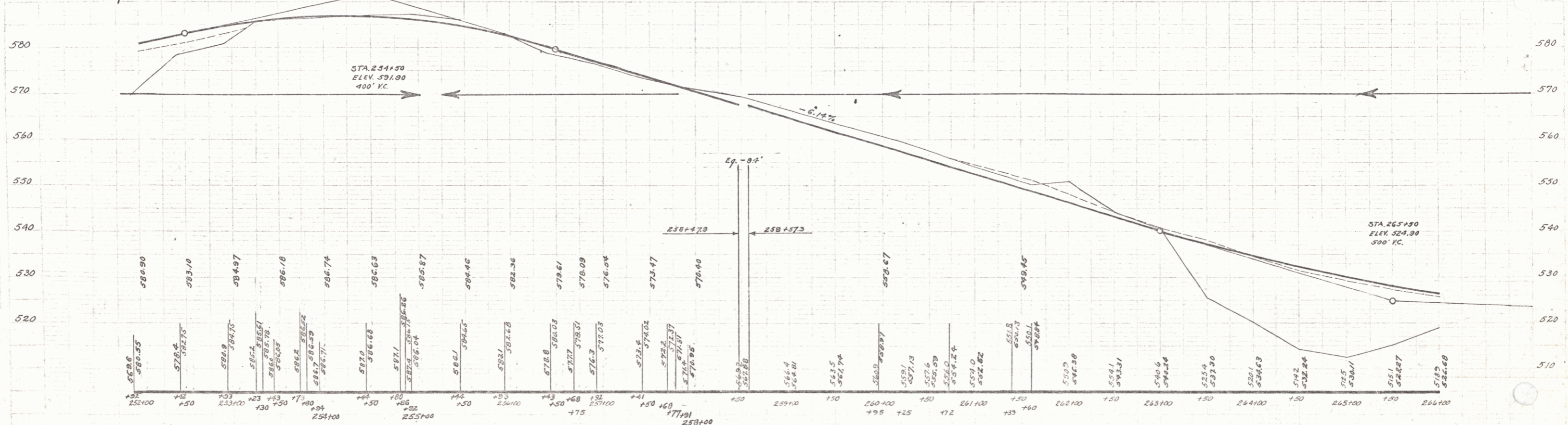
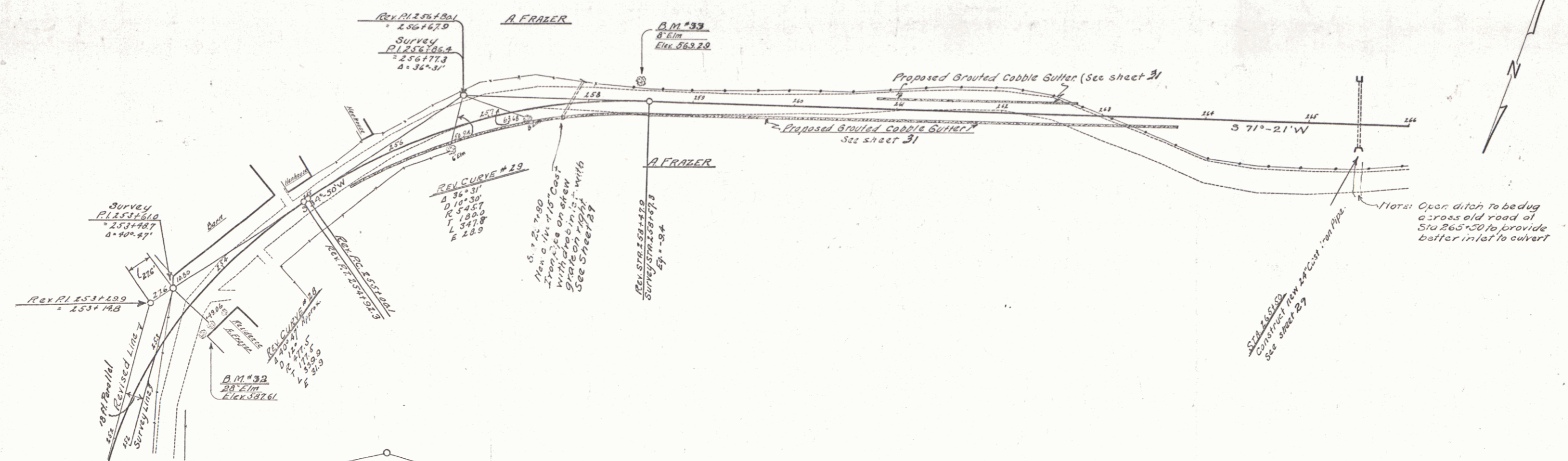


Cable Guard Rail Required			New Cast Iron Pipe Culverts Required				Grouted Cobble Gutter Required		
Stations	Left	Right	Station	Diag.	Length	Grade	Station	Side Width	Area
252100-252162	-	12	265+00	24"	66	5.9	259150-263175	2.0H	22.5
254100-254144	-	124	257+00	15"	42	26	261100-262175	2.0H	19.5
257150-261106	-	336							
262150-266104	-	352							
267150-266106	-	156							



B.M. # 32 SPIKE IN FOOT OF 28' ELM, 22.5 FT. OF STA 253+45 - ELEV. 587.41
 B.M. # 33 SPIKE IN TRUNK OF 8' ELM, 16 FT. OF STA 258+47 - ELEV. 569.29