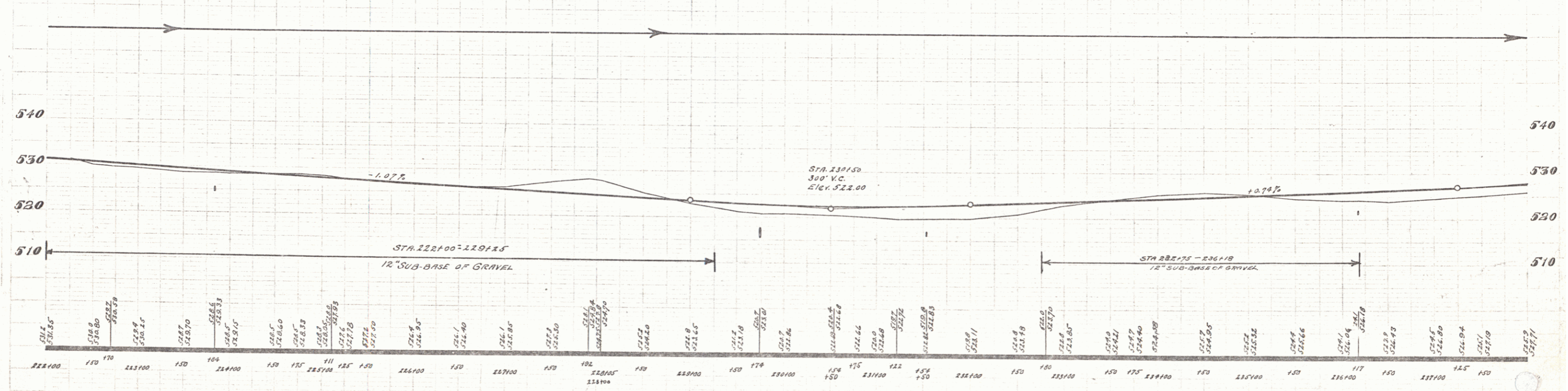
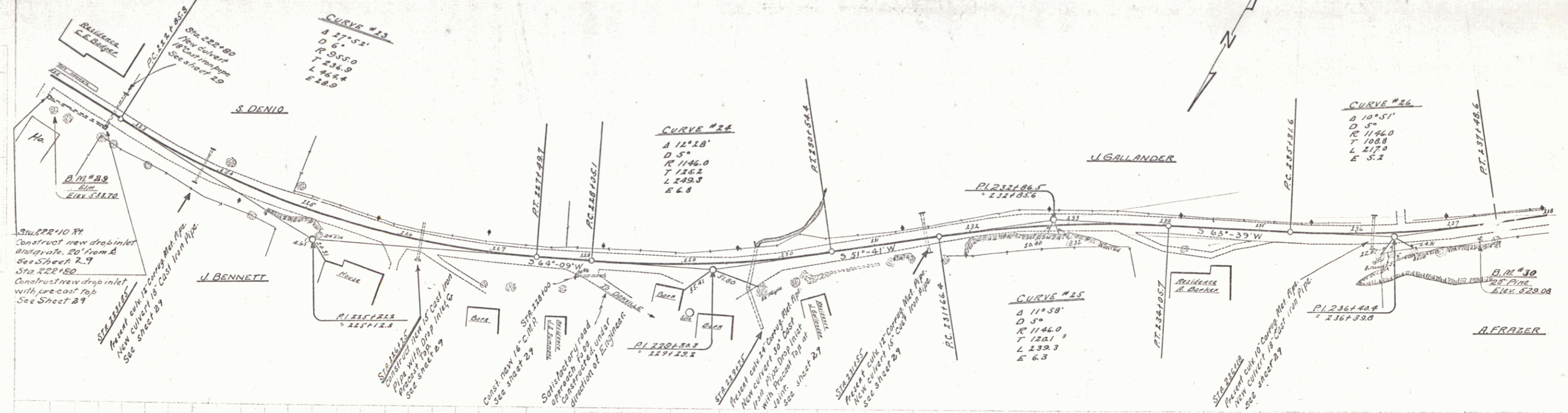


WOOD GUARD RAIL REQUIRED			CABLE GUARD RAIL REQUIRED			NEW CAST IRON PIPE CULVERTS REQUIRED				CORRUGATED METAL PIPE (PAVED INVERT) KEY DRIVEN PIPE CULVERTS REQUIRED			NEW VITRIFIED CLAY PIPE REQUIRED						
Culvert Station	Left	Right	Station	Left	Right	Station	Diag.	Length	Diag.	Length	Station	Side	Diag.	Length	Station	Side	Diag.	Length	
223184	24	24	22150-223184	294	-	226125	15"	40	1.5	1.2	174	22210	RH	16"	32	22210	R	12"	70'
226125	24	-	226120-228100	200	-	229775	30"	51	3.7	-	106	22240	R	18"	99	22240	R	15"	157
227154	-	24	222160-224112	164	-	231154	15"	44	-	2.3	33	22240	R	15"	157	-	-	-	-
226118	-	24	-	-	-	231110	18"	36	-	2.3	33	-	-	-	-	-	-	-	-
-	-	-	-	-	-	222190	18"	36	-	1.5	17	-	-	-	-	-	-	-	-



B.M. #29 Spike in root of 36" Elm 25' ft right of Sta. 222100 Elev. 533.70  
 B.M. #30 Spike in root of 30" Pine 18' ft right of Sta. 231100 Elev. 529.03