

**CABLE GUARD RAIL REQUIRED**

Station	Side	Length
18450-18510	Left	76
18450-18475	Right	76
186175-188127	Right	152

**NEW CAST IRON PIPE CULVERTS REQUIRED**

Station	Diam	Length	Conc. A	Steel
185110	24"	71	2.4	5.4

**CONC. GALV. METAL PIPE (PAVED INVERT)**

Station	Side	Diam	Length	Conc. A	Steel
186160	RH	12"	24	1.6	1.6

**CONCRETE CURB & GUTTER REQUIRED**

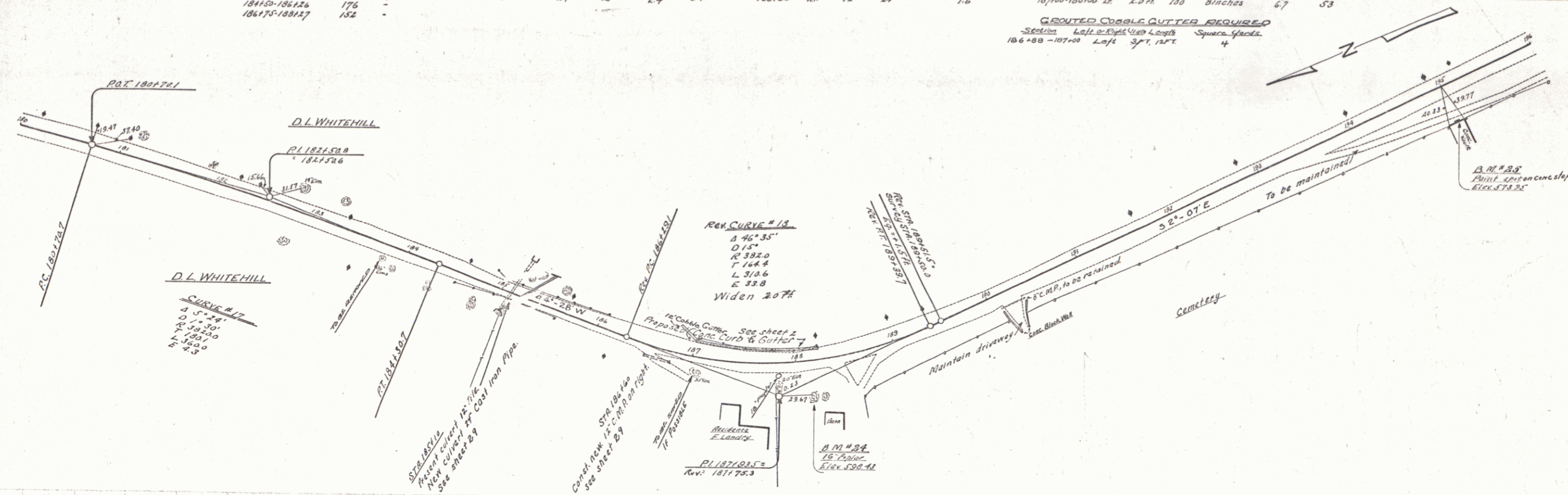
Stations	Side	Width	Height	Conc. A	Steel
187100-188100	LH	2.0 ft	120	6.7	5.3

**GRAVELLED COBBLE GUTTER REQUIRED**

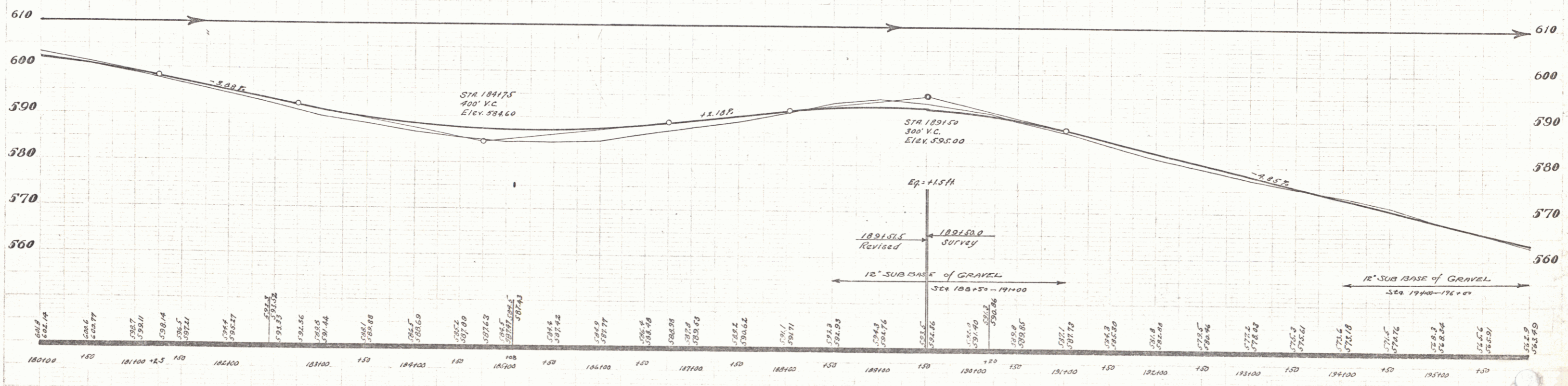
Section	Left Side	Right Side	Space
186180-187100	Left	Right	4

15-B-1929 11 97

Wood  
Kimball  
1929



Wood  
Kimball  
1929



B.M. #24 Spike in root of 16" maple, 36 ft. right of Sta 180114. Elev. 598.43  
 B.M. #25 Paint spot on concrete step of wall, 36 ft. right of Sta 195100. Elev. 573.95

SERIES F.R. 15-B  
 SHEET 77 OF 97