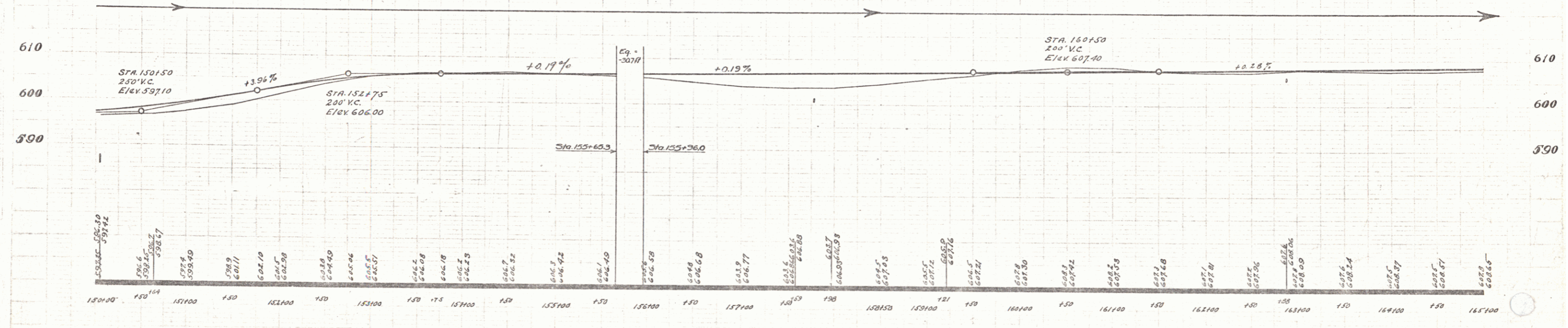
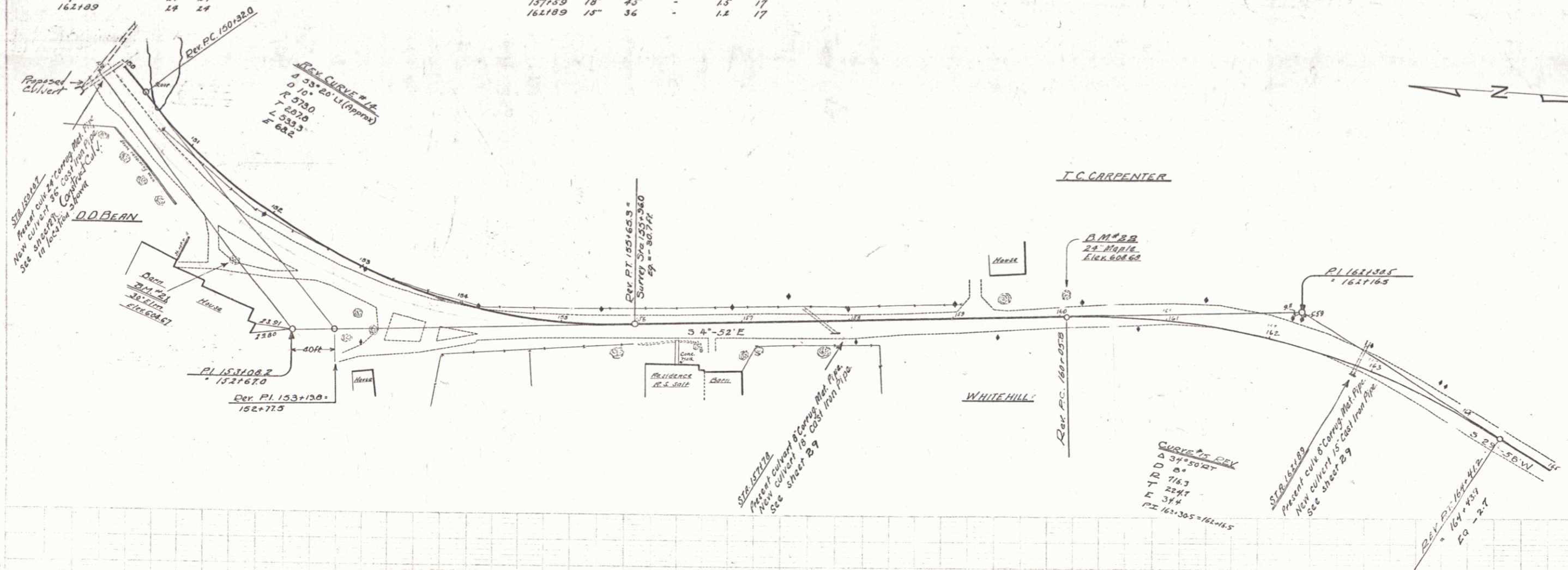


15-G 1929 .9 97

WOOD GUARD RAIL REQUIRED			CABLE GUARD RAIL REQUIRED			NEW CAST IRON PIPE CULVERTS REQUIRED					
Culvert Station	Left	Right	Stations	Left	Right	Station	DIAM	LENG	COE. II	CONC. STRE	
159+07	24	24	159+00-159+00	-	-	159+07	36	39	27	-	126
157+59	24	24				157+59	18	45	-	15	17
162+89	24	24				162+89	15	36	-	15	17



B.M. #31 Spike in root of 30' Elm, 30 ft. right of Sta. 152+16, Elev. 604.67
 B.M. #32 Spike in root of 34' Maple, 19 ft. left of Sta. 160+47, Elev. 608.68