

WOOD GUARD RAIL REQUIRED

Culvert Station	Left	Right
109190	24	24
118162	-	24
122120	-	24
113108	24	24

CABLE GUARD RAIL REQUIRED

Station	Left	Right
118125-119120	104	-
121150-123100	150	-

NEW CAST IRON PIPE CULVERTS REQUIRED

Station	Diam.	Length	Grade	Culvert Size
108162	18"	42'	0.2	18"
112120	18"	36'	-	3.0
113108	18"	39'	-	3.0

NEW DROP INLETS WITH GRATE REQUIRED

Station	Cont. Class.	Size	Grate
107180 RA	14 cu yds.	39"	1
108170 RA	14 "	39"	1

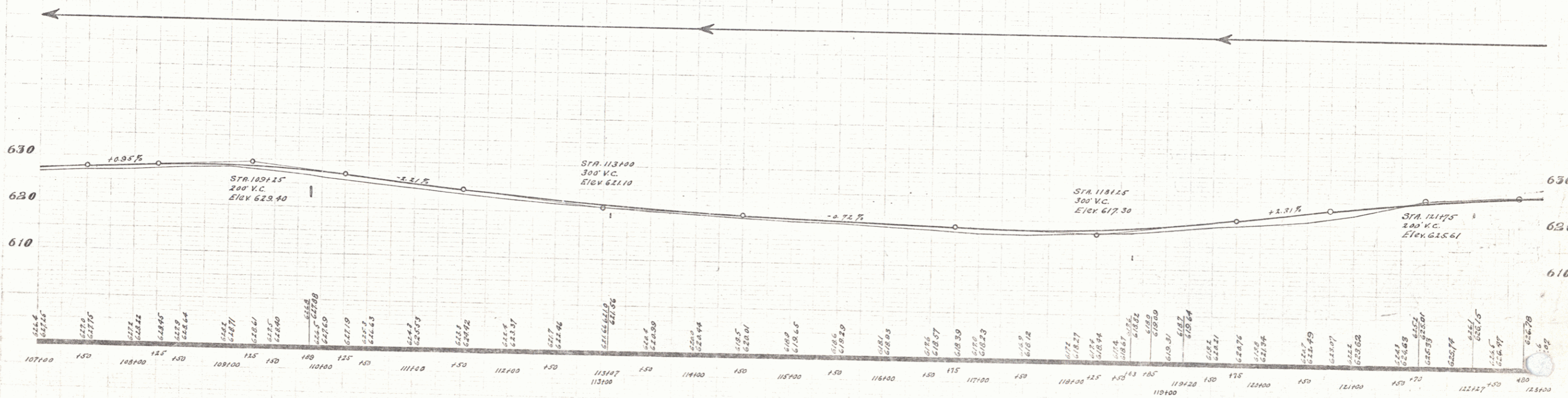
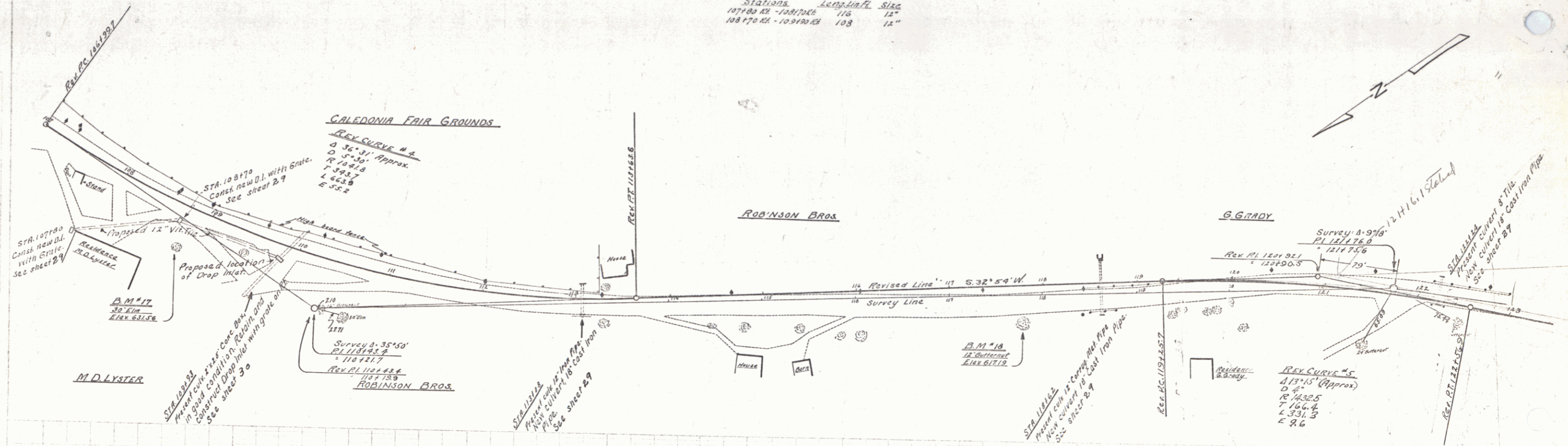
CULVERT REPAIRS REQUIRED

Station	Cont. Class.	Size	D.I. Grate
109190	0.8	31	1

NEW VIT. TILE PIPE REQUIRED

Station	Length	Size
107180 RA - 108170 RA	115	12"
108170 RA - 109190 RA	108	12"

15-G 1929-6 97



B.M. #17 Spike in root of 50' Elm, 40 ft. right of Sta 100100. Elev 631.56
 B.M. #18 Spike in root of 18' Butternut, 24 ft. right of Sta 117101. Elev 617.19

SERIES 1925-B
 SHEET 6 OF 97