

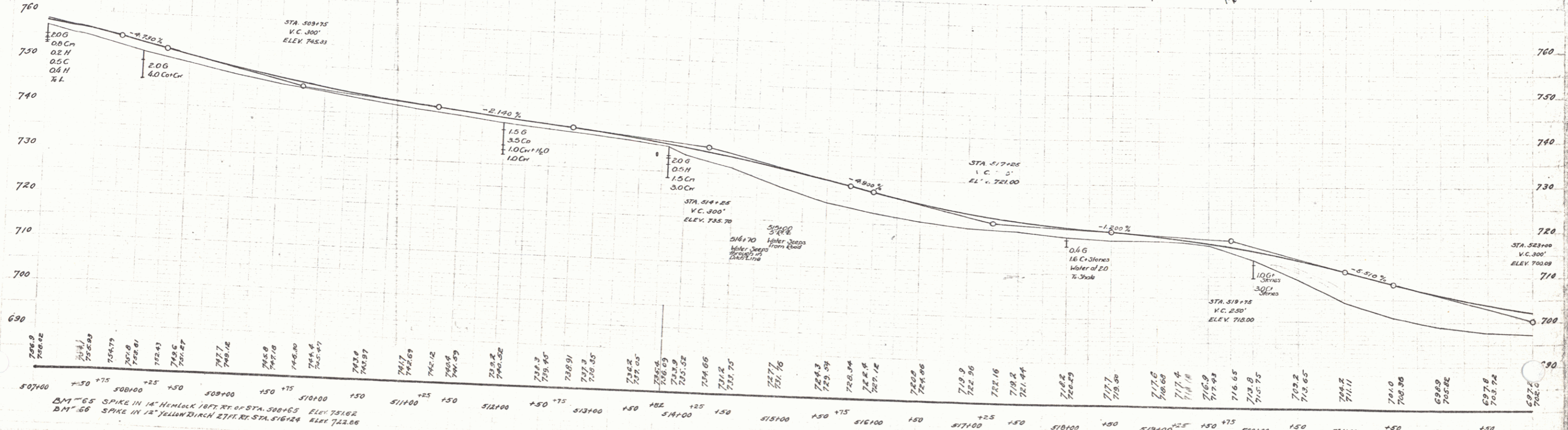
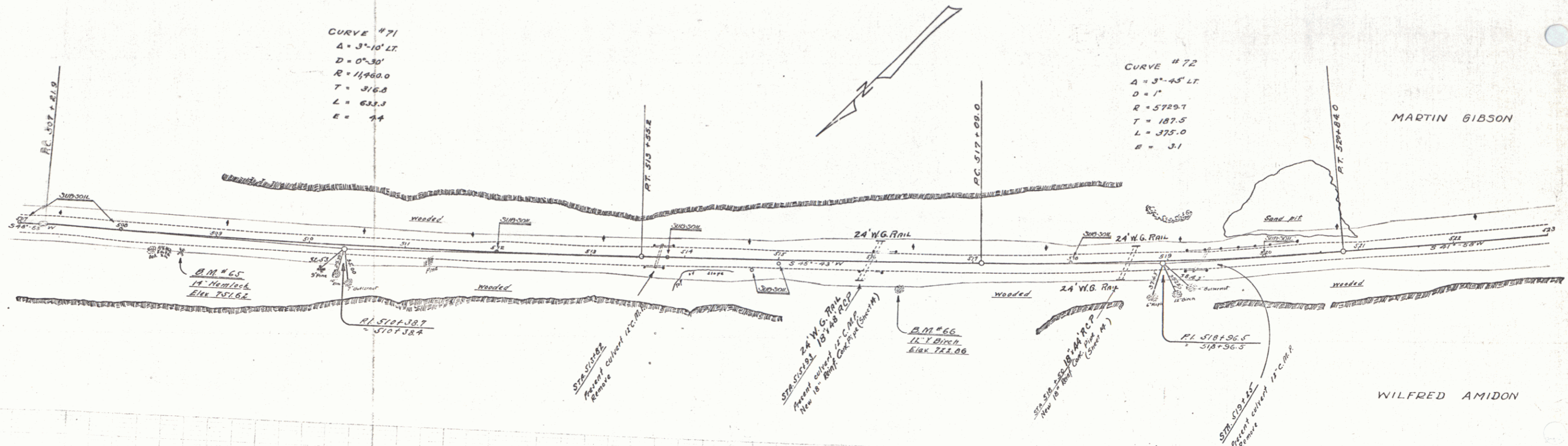
WOOD GUARD RAIL REQUIRED
 CULVERT STATIONS LEFT RIGHT
 515 + 03' 24' 24'
 518 + 50' 24' 24'

NEW RINK CONG. PIPE CULVERTS REQUIRED
 STATIONS DIAM. LENGTH CONC. CORR. SLOPE
 515 + 55' 18" 48' - 3.420 32.00%
 518 + 50' 18" 44' - 3.420 32.00%

STATE OF ILLINOIS
 DEPARTMENT OF TRANSPORTATION
 120-A 1930 9 82

CURVE #71
 $\Delta = 3^{\circ}10' \text{ LT.}$
 $D = 0^{\circ}30'$
 $R = 11400.0$
 $T = 316.8$
 $L = 623.3$
 $E = 44$

CURVE #72
 $\Delta = 3^{\circ}45' \text{ LT.}$
 $D = 1^{\circ}$
 $R = 5729.7$
 $T = 187.5$
 $L = 375.0$
 $E = 31$



507+00 508+00 509+00 510+00 511+00 512+00 513+00 514+00 515+00 516+00 517+00 518+00 519+00 520+00 521+00 522+00 523+00
 BM #65 SPIKE IN 14" HEMLOCK 187 FT. RT. OF STA. 508+65 ELEV. 751.62
 BM #66 SPIKE IN 12" YELLOW BIRCH 271 FT. RT. OF STA. 516+24 ELEV. 722.56

SERIES No. 120A
 SHEET 9 OF 52