

INDEX OF SHEETS

SHEET NO. 1	TITLE PAGE
" 2	TYPICAL CROSS-SECTION OF IMPROVEMENT ONE COURSE CEMENT CONCRETE PAVEMENT
" 3	DETAILS OF CONSTRUCTION
" 4-13	PLAN AND PROFILE SHEETS - STA. 437+00 TO STA. 579+28.9
" 14	STD. STRUCTURE SHEET 5-20 - PIPE CULVERTS
" 15	" " " " 5-21 - BOX " "
" 16	" " " " 5-22 - GUARD RAIL, ETC.
" 17	BRIDGE DETAILS - STA. 481+75
" 18-28	BRIDGE STA. 558+00-559+18
" 18-22	SUPERSTRUCTURE DETAILS
" 23	SERIES SB NO. 2 TYPICAL DETAILS
" 24	" " " 7 BALLUSTRADE RAIL
" 25	" " " 55 TEE BEAM BRIDGE
" 26	" " " 2A TYPICAL DETAILS
" 27	" " " 6 SPECIAL
" 28	" " " 8 STANDARD APPROACH SLAB
" 29	BOX CULVERT - PEN STOCK COVER - STA. 558+00
" 30	3" INTEGRAL CURB AND CONSTRUCTION DETAILS
" 31-32	CROSS-SECTION SHEETS

FED. ROAD DIST. NO.	STATE	FED. AID PROJ. NO.	FISCAL YEAR	SHEET NO.	TOTAL SHEETS
9	VT.	120-A	1930	1	32

STATE OF VERMONT
STATE HIGHWAY DEPARTMENT

PLAN AND PROFILE OF PROPOSED
STATE HIGHWAY
FEDERAL AID PROJECT

TOWN OF BARNET

ST. JOHNSBURY-WELLS RIVER ROAD

FROM THE END OF F.R.P. 15-G, SOUTH 2.683 MILES

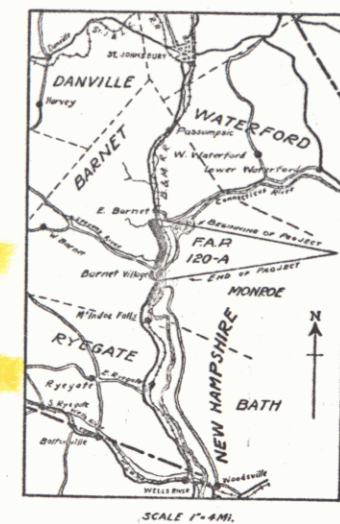
LENGTH OF PROJECT

INCLUDING BRIDGE OVER 20 FT. SPAN 14,167.7 FT. = 2.683 MILES
EXCLUDING " " 20 FT. " 14,049.7 FT. = 2.660 MILES

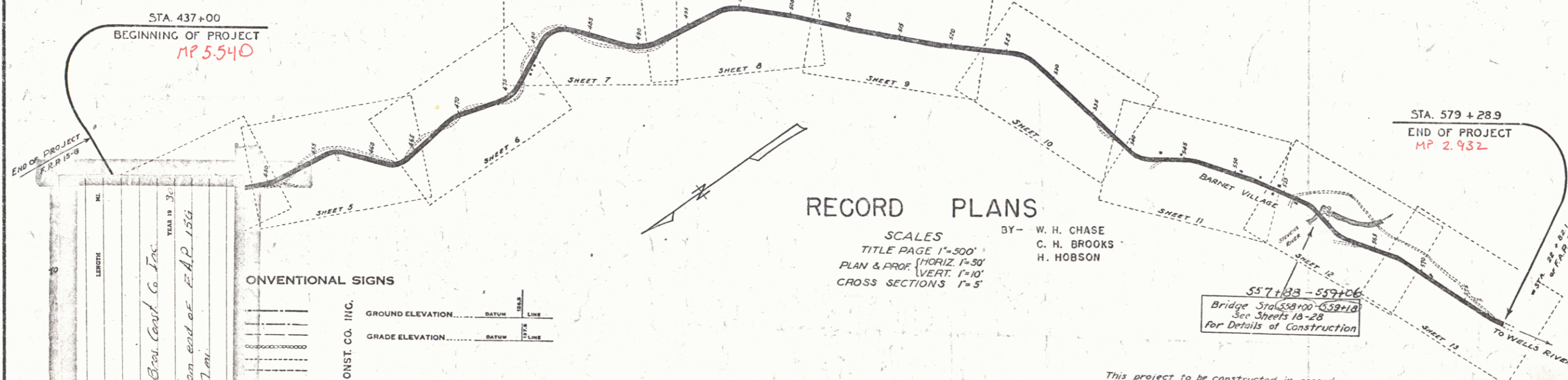
Route: US 5

Project: F120-A

Pin # 9912349



(To Be Returned To R.O.W. Division)
Town of US 5
PERPETUAL
ET I A N M O
NOISIAIC AV-WEIIE



RECORD PLANS

SCALES
TITLE PAGE 1"=500'
PLAN & PROF. (HORIZ.) 1"=50'
VERT. 1"=10'
CROSS SECTIONS 1"=5'

BY - W. H. CHASE
C. H. BROOKS
H. HOBSON

PROJECT NUMBER	120-A
TITLE	Concrete
CONTRACTOR	Miller Bros. Const. Co. Inc.
LOCATION	US 5 from end of F.R.P. 15-G southward 2.7 mi.
YEAR	1930
DATE	March 9, 1930
SCALE	1"=500'
PROJECT	120-A
DATE	March 9, 1930

CONVENTIONAL SIGNS

GROUND ELEVATION	BATH	LINE
GRADE ELEVATION	BATH	LINE
CURVE DATA		
DEFLECTION ANGLE	Δ	
DEGREE OF CURVE	D	
RADIUS OF CURVE	R	
TANGENT DISTANCE	T	
LENGTH OF CURVE	L	
EXTERNAL DISTANCE	E	
POINT OF INTERSECTION	P. I.	
POINT OF CURVE	P. C.	
POINT OF TANGENT	P. T.	
POINT ON TANGENT	P. O. T.	

557+133-559+06
Bridge Sta. 558+00-559+18
See Sheets 13-28
for Details of Construction

This project to be constructed in accordance with Standard Road and Bridge Specifications for 1930. These plans are subject to such revisions as may be required by the Bureau of Public Roads or the Chief Engineer.

RIGHT-OF-WAY DIVISION
TOWN FILE
PERPETUAL
Town of US 5
(To Be Returned To R.O.W. Division)

APPROVED March 9, 1930
H. S. Sargent
COMMISSIONER OF HIGHWAYS

NOTE: ANY FURTHER INFORMATION CONCERNING FINAL QUANTITIES, AMOUNTS OR OTHER MATTERS PERTAINING TO THIS PROJECT MAY BE OBTAINED EITHER THE FIELD BOOKS OR THE ESTIMATE FILE.

RECOMMENDED
DISTRICT ENGINEER
BUREAU OF PUBLIC ROADS
RECOMMENDED FOR APPROVAL
CHIEF ENGINEER
BUREAU OF PUBLIC ROADS
APPROVED
DIRECTOR - BUREAU OF PUBLIC ROADS

SERIES F. No. 120A FILED
SHEET 1 OF 32