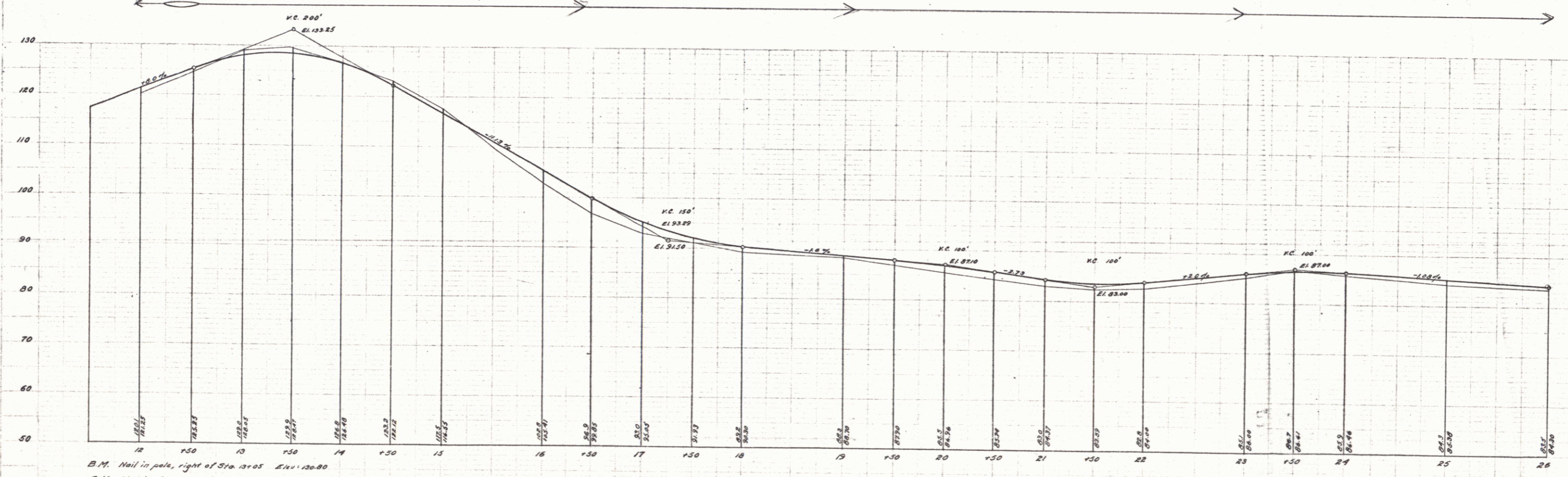
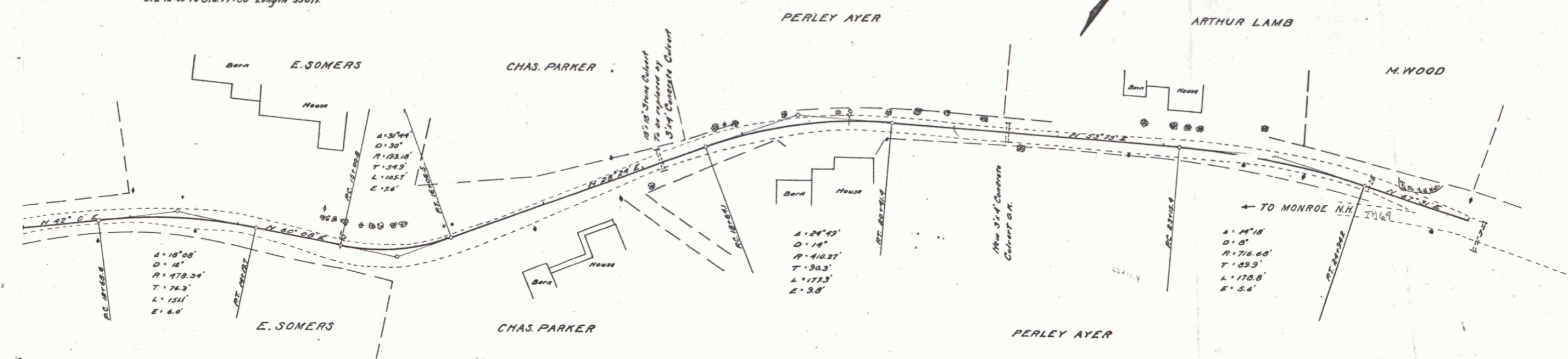


**GUARD RAIL REQUIRED**  
**ON LEFT**  
 Sta. 17+30 to Sta. 18+30 Length 40 ft.  
 21+30 " 21+70 " 40"  
**ON RIGHT**  
 " 17+30 to Sta. 18+30 " 40"  
 21+30 " 21+70 " 40"  
 24+30 " 25+46 " 96"  
 Total this sheet 272'

**STONE BASE REQUIRED**  
 Sta. 17+00 to Sta. 26+00 Length 900 ft.  
**V-STONE BASE REQUIRED**  
 Sta. 12+00 to Sta. 17+00 Length 500 ft.  
**DRAIN TILE REQUIRED**  
 IN BASE  
 Sta. 12+00 to Sta. 17+30 Length 530 ft.

**NEW CULVERTS REQUIRED**  
 Sta. 18+10 3'4" Reinforced Concrete  
 1-3-4 Concrete 27 ea. yds.  
 1-3-6 " 12.6 " "  
 Steel 167 lbs.

PROJECT	STATE	FED. AID	CONTRACT	YEAR	SHEET	TOTAL SHEETS
9	VT	3			9	10



G.A. Free  
 C.A. Dunham  
 Surveyors  
 100 State St.  
 Montpelier, Vt.

G.A. Free  
 C.A. Dunham  
 Surveyors  
 100 State St.  
 Montpelier, Vt.

Series C 163 Filed  
 Sheet 10 of 10