

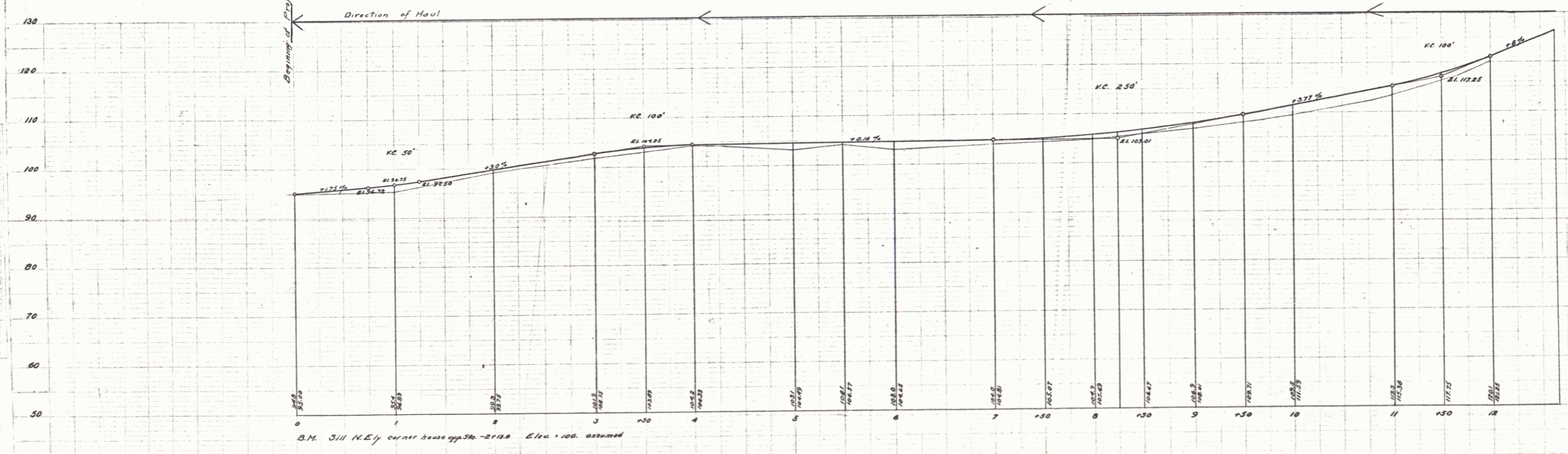
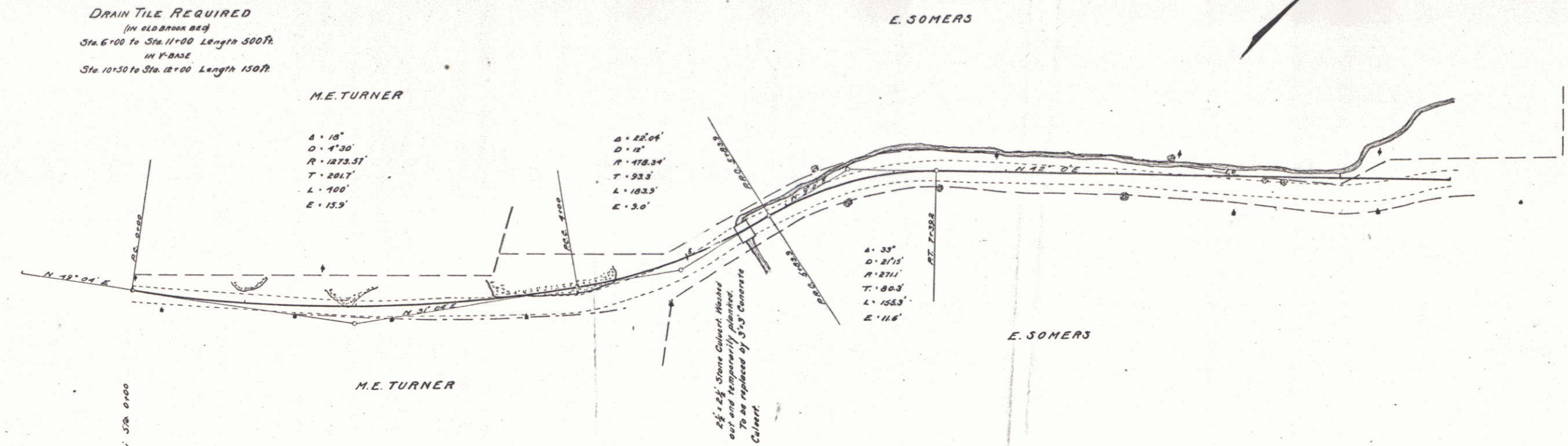
GUARD RAIL REQUIRED
 ON LEFT
 Sta 5+30 to Sta 7+30 Length 200ft
 ON RIGHT
 " 1+60 to Sta 3+20 " 160"
 " 5+22 " 5+86 " 64"
 Refer this sheet 424"

STONE BASE REQUIRED
 Sta 0+00 to Sta 11+00 Length 1100ft
V-STONE BASE REQUIRED
 Sta 11+00 to Sta 12+00 Length 100ft
DRAIN TILE REQUIRED
 (in old drain bed)
 Sta 6+00 to Sta 11+00 Length 500ft
 Sta 10+30 to Sta 12+00 Length 150ft

NEW CULVERTS REQUIRED
 Sta 5+50 5'x5' Reinforced Concrete
 1'x2'4" Concrete 6.2 cu yds
 1'x3'6" 11.2 "
 Steel 133 lbs

DESIGN NO.	DATE	REV.	BY	CHECKED	SHEET NO.	TOTAL SHEETS
9	VT	3			3	10

G. A. Somers
 Civil Engineer
 No. 100
 State of Vermont
 License No. 100
 1919



Series F No. 3 Filed
 Sheet 3 of 10