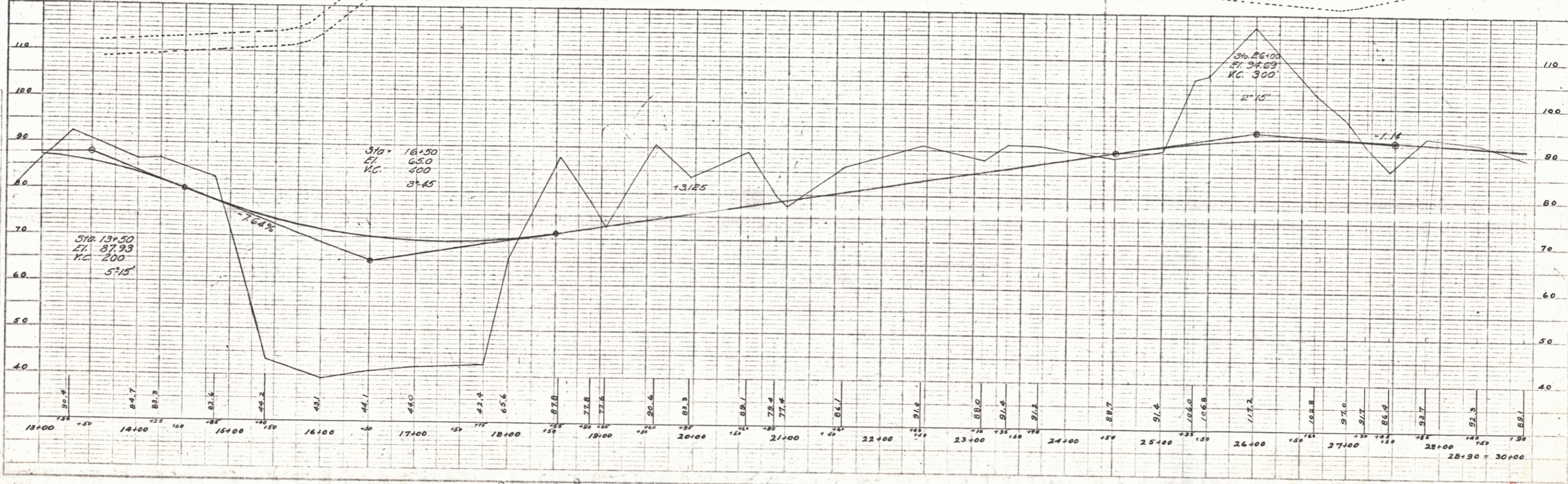
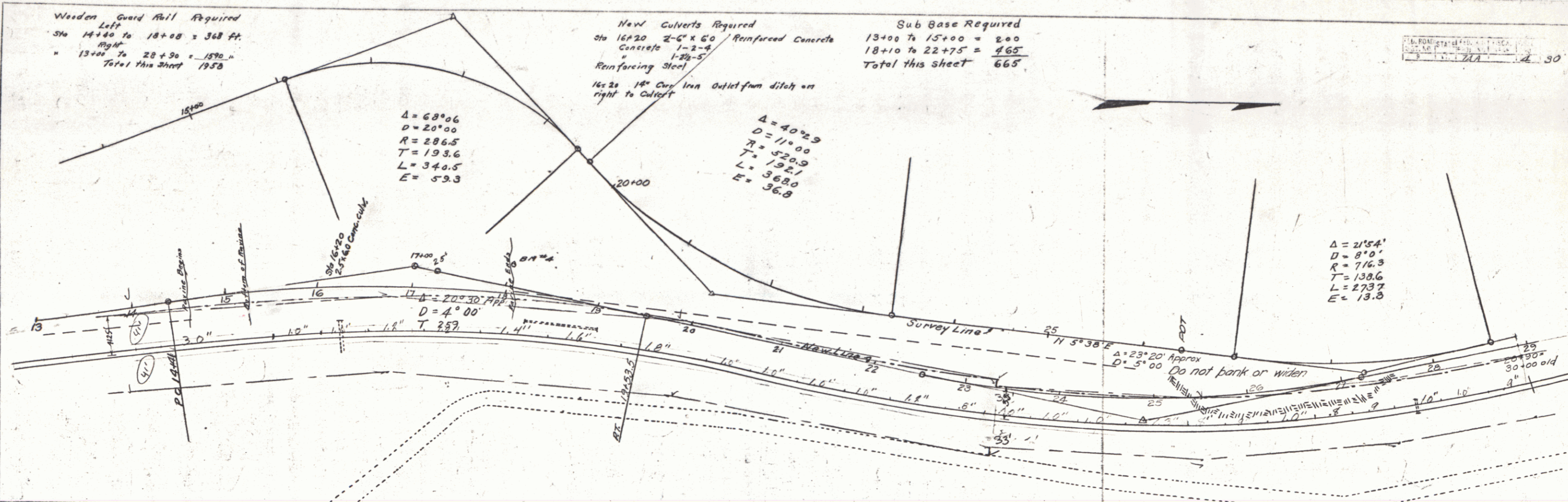


Wooden Guard Rail Required  
 Left  
 Sta 14+40 to 18+00 = 360 ft.  
 Right  
 " 13+00 to 20+90 = 1590 ft.  
 Total this sheet 1950

New Culverts Required  
 Sta 16+20 2'-6" x 6'0" Reinforced Concrete  
 " 1-2-4  
 " 1-20-5'  
 Reinforcing Steel  
 16x20 18" Cur Iron Outlet from ditch on  
 right to Culvert

Sub Base Required  
 13+00 to 15+00 = 200  
 18+10 to 22+75 = 465  
 Total this sheet 665

Scale 1" = 40'  
 1" = 20'



FILED

DATE	12/1/50
BY	W. B. H.
CHECKED	
DATE	
BY	

PROFILE

DATE	12/1/50
BY	W. B. H.
CHECKED	
DATE	
BY	

SHEET 4 OF 50

17