

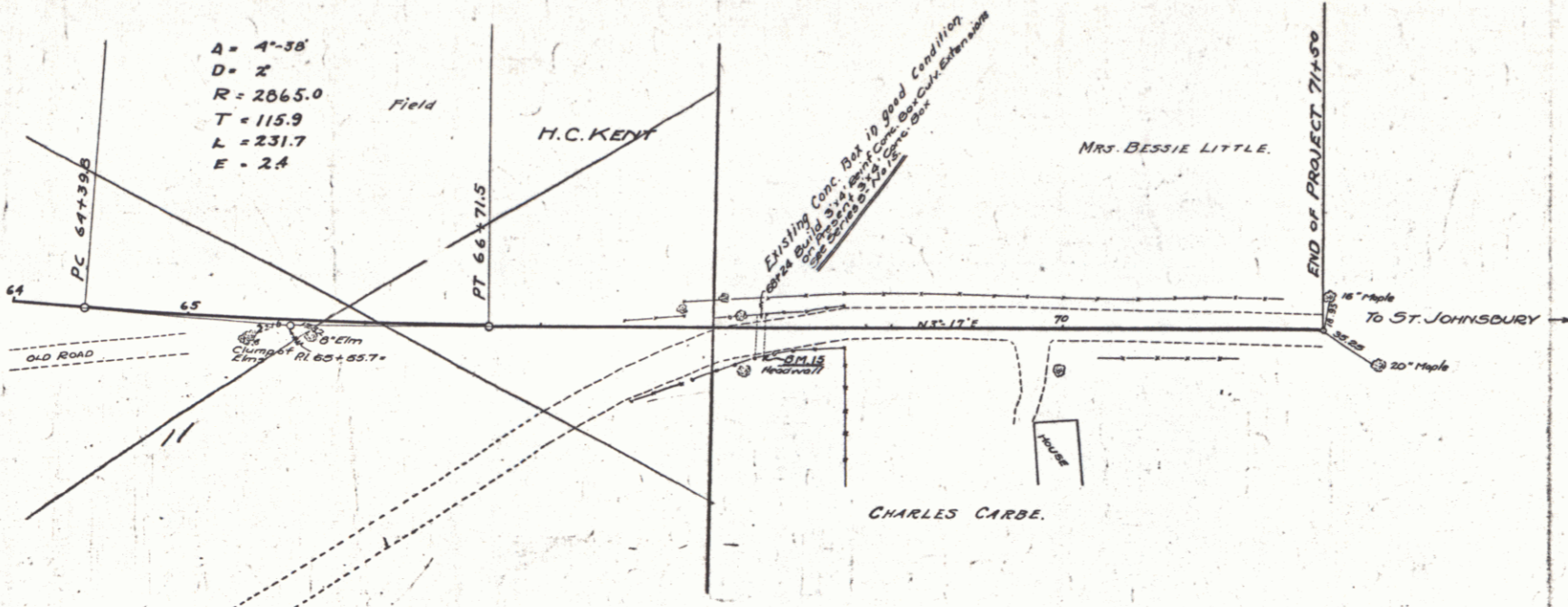
GUARD RAIL REQUIRED
LEFT
 Sta. 63+12 to 63+36 Length 24 ft.
RIGHT
 Sta. 63+12 to 63+36 Length 24 ft.
 TOTAL THIS SHEET 48 ft.

CULVERT REPAIRS REQUIRED
 Sta. 68+24 Extension on Present 3x4' Culvert With
 3x4' Reinfr. Conc. Box
 Conc. Class A (1-2-4) 143 cy.
 Reinfr. Steel 693 lb.

SUB-BASE REQUIRED
 Sta. 64+00-71+50 10" Base Leng. 750 ft.

74A 1926 B 25

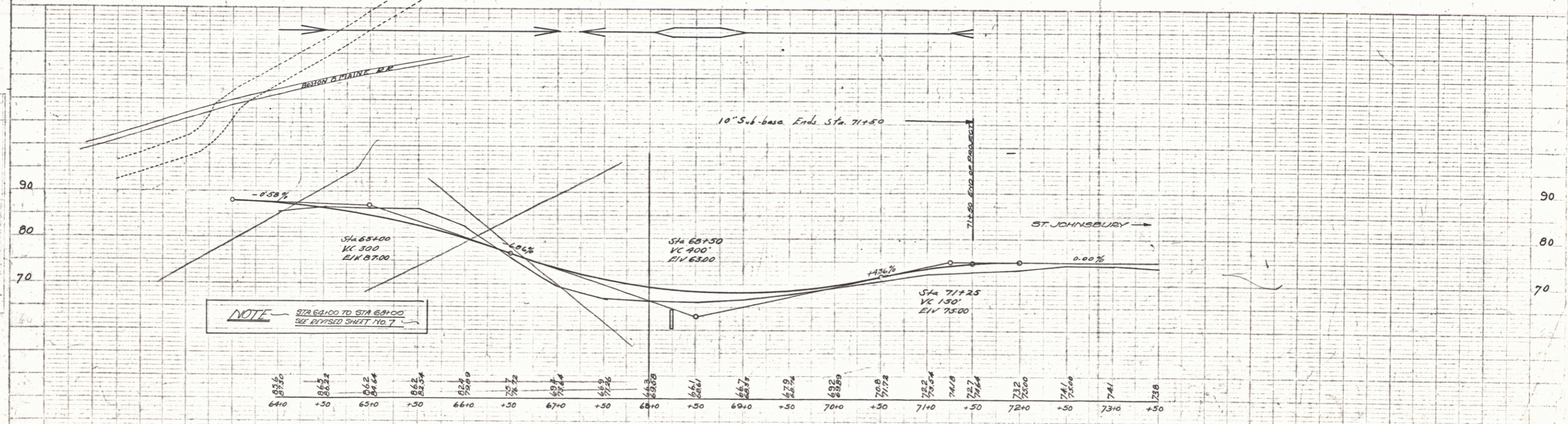
NOTE - STA 64+00 TO STA 68+00
 SEE REVISED SHEET NO. 7



A = 4'-38"
 D = 2'
 R = 2065.0
 T = 115.9
 L = 231.7
 E = 2.4

PLAN
 DRAWN BY
 CHECKED BY
 DATE

REVISIONS
 NO. DATE BY



NOTE - STA 64+00 TO STA 68+00
 SEE REVISED SHEET NO. 7

B.M. 15 N.E. Cor. of East Headwall of Culvert Sta. 68+24 Elev. 66.31

SERIES C No. 74A
 SHEET 6 OF 25