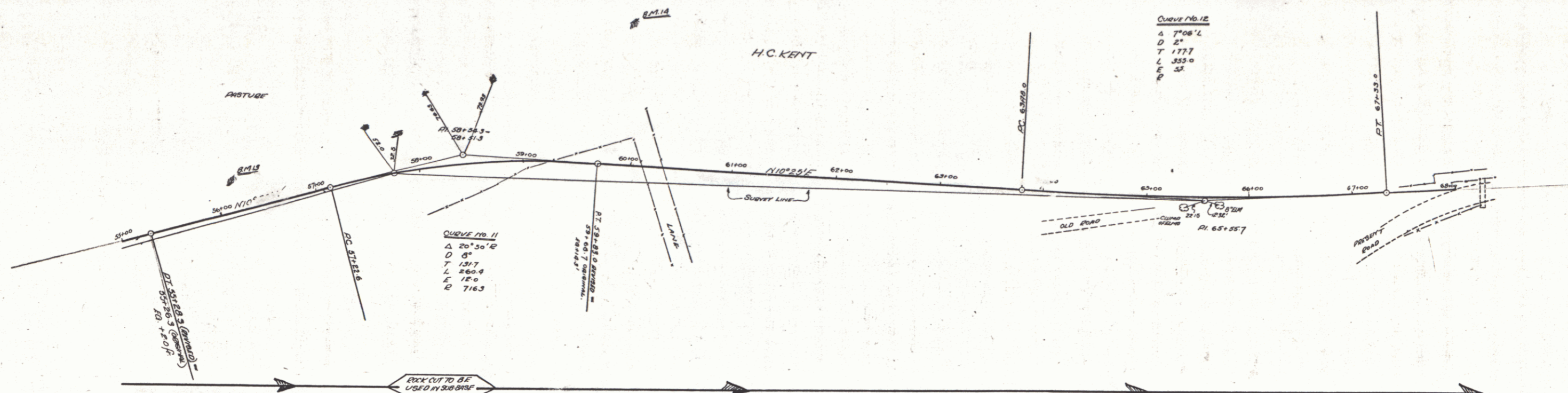


WOOD BURNED ANVIL REQUIRED
 CABLE GUNNED PAUL REQUIRED
 NOTE - STA 59+00 TO STA 61+10 - 40% SLOPE TO BE
 USED THROUGH THESE SECTIONS ON LEFT IF
 ENCOUNTERED

PLAN
 DRAWN BY
 CHECKED BY
 DATE



PROFILE
 DRAWN BY
 CHECKED BY
 DATE

