

GUARD RAIL REQUIRED

Direction	Station Range	Length (FT)
LEFT	STA 13+00 to 14+30	130 FT
	20+13 - 20+37	24 "
RIGHT	25+38 - 25+62	24 "
	STA 13+00 to 14+30	130 FT
	15+00 - 20+32	432 "
	23+00 - 26+00	300 "
TOTAL THIS SHEET		1089 FT

NEW CULVERTS REQUIRED

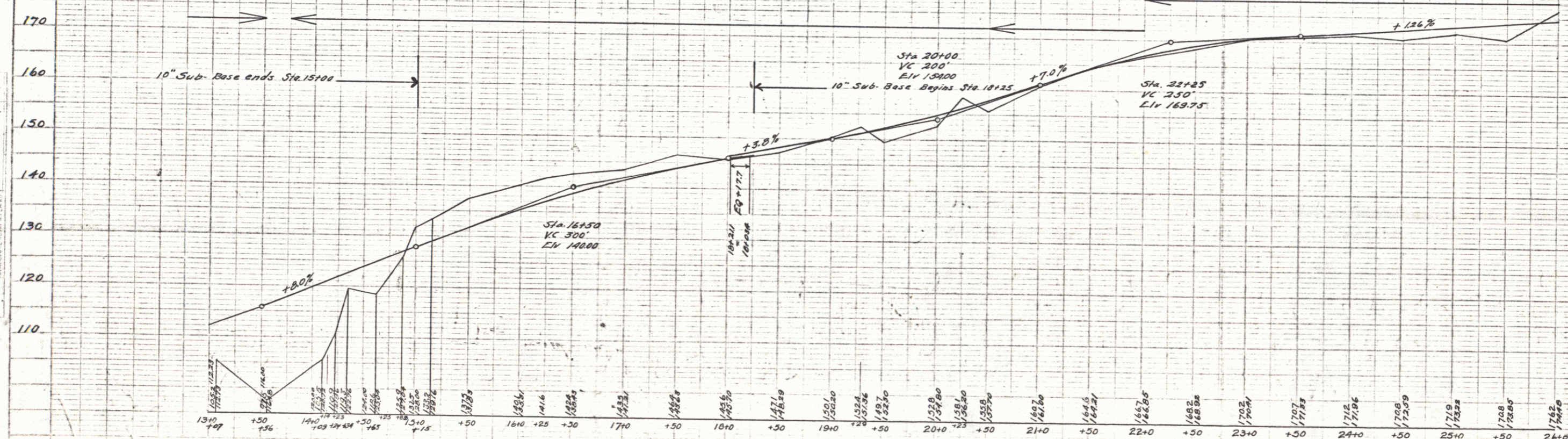
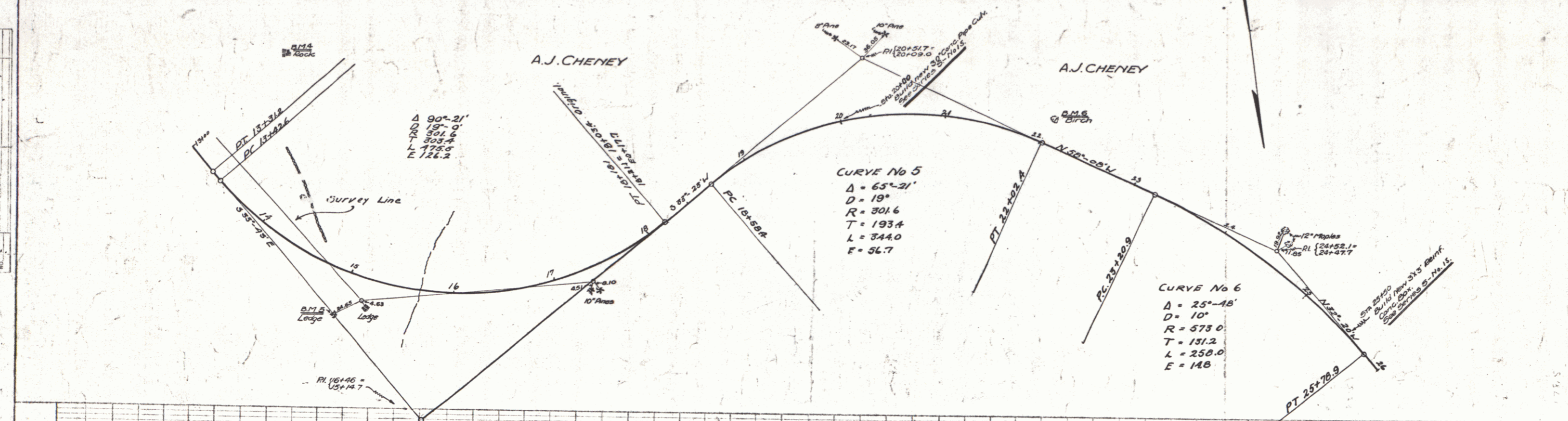
STA 20+00	30" Conc. Pipe CULV. Leng. 32 FT.
	Conc. Class B (1-2-3)
	Reinf. Steel 59 cy.
STA 25+00	33" 18" Dia. Box Culvert
	Conc. Class A (1-2-4)
	16.6 cy.
	Reinf. Steel 83.2 lb.

SUB-BASE REQUIRED

STA 13+00 to 15+00	10" Base Length 200 FT.
15+25 to 25+00	10" Base 775 "

PLAN

DATE	1926
BY	W. J. ...
CHECKED BY	...
APPROVED BY	...
SCALE	1" = 40'



B.M. 5 Drill Hole in Rock 125 Ft. Left of Sta. 13+00 Elev. 125.58
 B.M. 6 Spike in Root of Birch 25 Ft. 22+05 Elev. 170.38