

**WOOD GUARD RAIL REQUIRED**

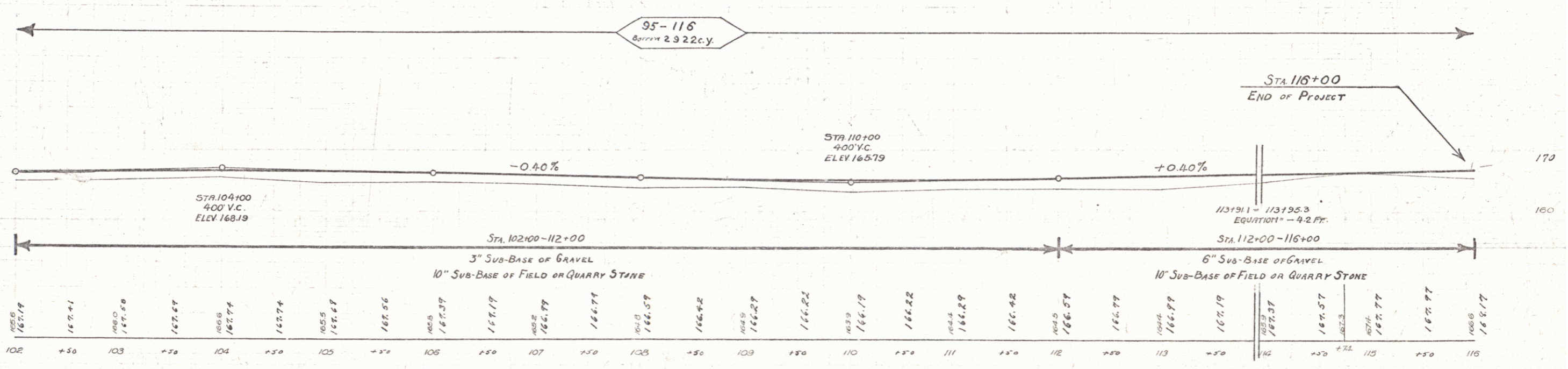
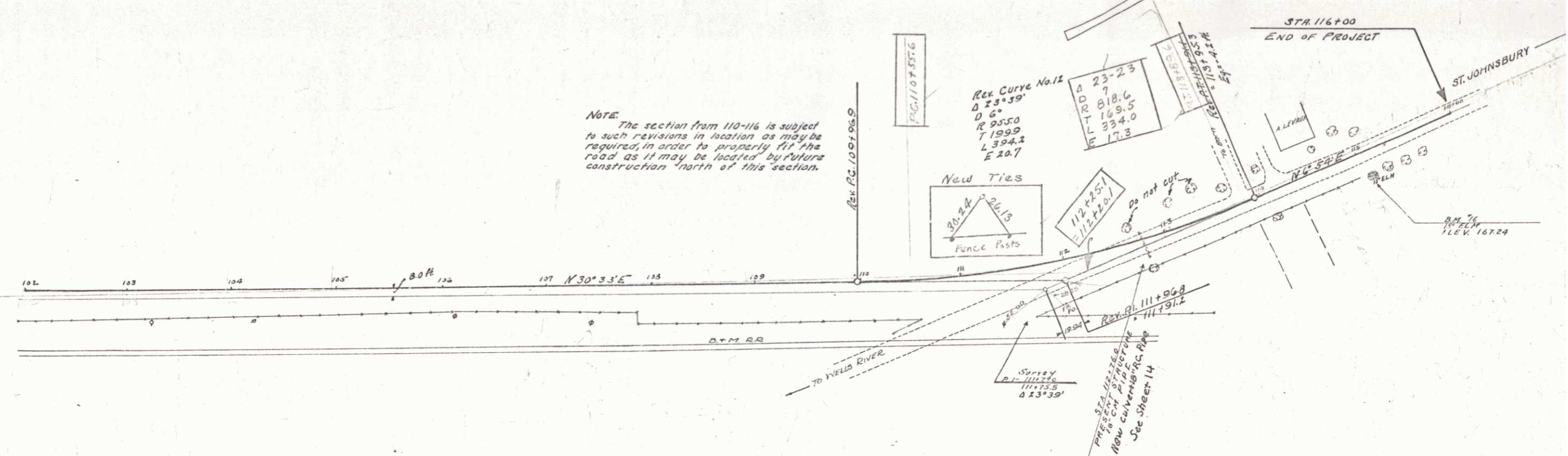
Culvert Station	Lt.	Rt.
112+76	24	24

**NEW REINF. CONC. PIPE CULVERTS REQUIRED**

Station	Diam.	Length	Conc. B.	Steel
112+76	18"	36#	3.0cy	33"

STATE OF VERMONT  
 ROAD DISTRICT NO. 15  
 PROJECT NO. 15F 1929 12 57

NOTE: The section from 110-116 is subject to such revisions in location as may be required, in order to properly fit the road as it may be located by future construction north of this section.



B.M. 16 - 15' ELEV. 217.12 (1911) OF STA. 115+03 - ELEV. 167.24

SERIES FR No 15F  
 SHEET 12 OF 57