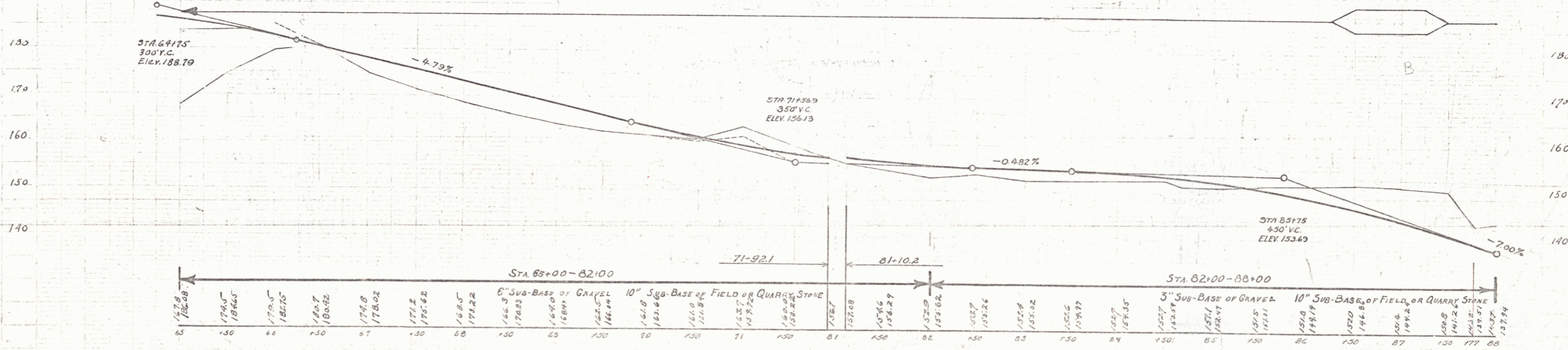
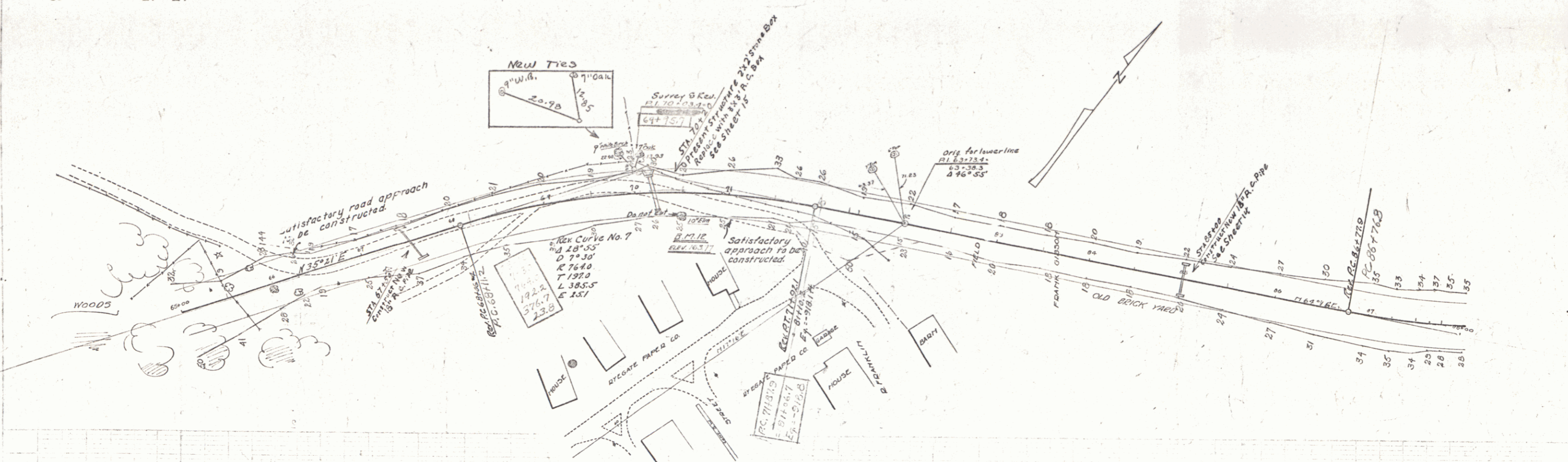


Wood Guard Rail Required	4" P.C.	24" P.T.
67+50	24	24
70+20	24	24
85+00	24	24

Station	Diam.	Length	Conc. B. Steel
67+50	18"	44'	3.0cy. 33#
85+00	18"	3p'	3.0cy. 33#

Station	Size	Length	Conc. A. Steel
70+20	3x3'	36'	17.1cy. 1117#

NO. ROAD STATE P. & R. FIELD SHEET
 151 151 151 151 151 151
 191 192 9 57



BM 11A - 2" Yellow Birch 44' W of Sta. 67+50 Elev. 152.09
 BM 11 Elev. 162.12

Date	Nature of Revision	By
Sept 27 1917	Grade raised 5.150-5.7100 to avoid water pipe at 67+50.	W. J. [unclear]

SERIES FR NO 151
 SHEET 9 OF 57