

Wood Guard Rail Required
 Culvert Station Left Right
 34+50 24 24

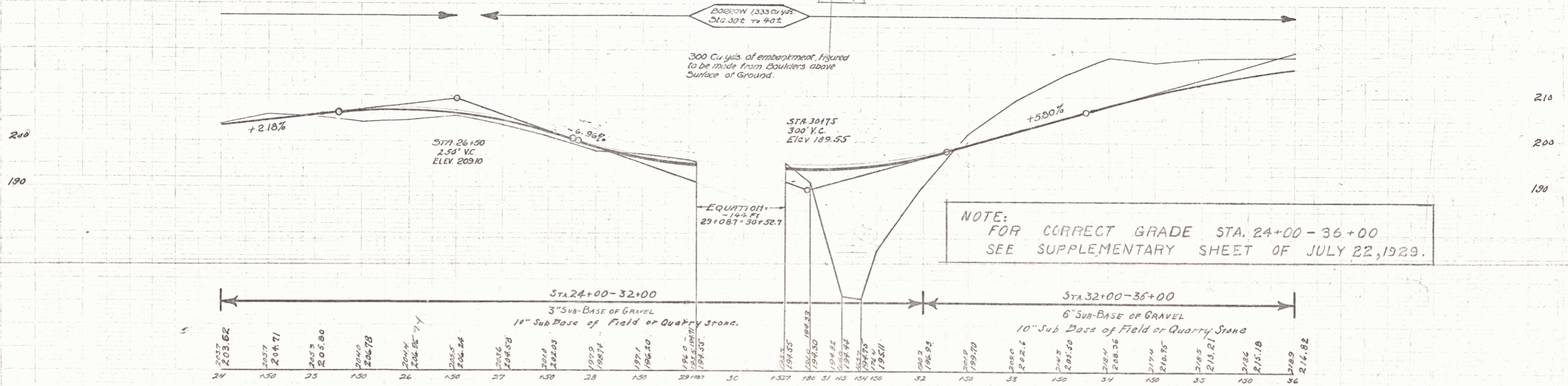
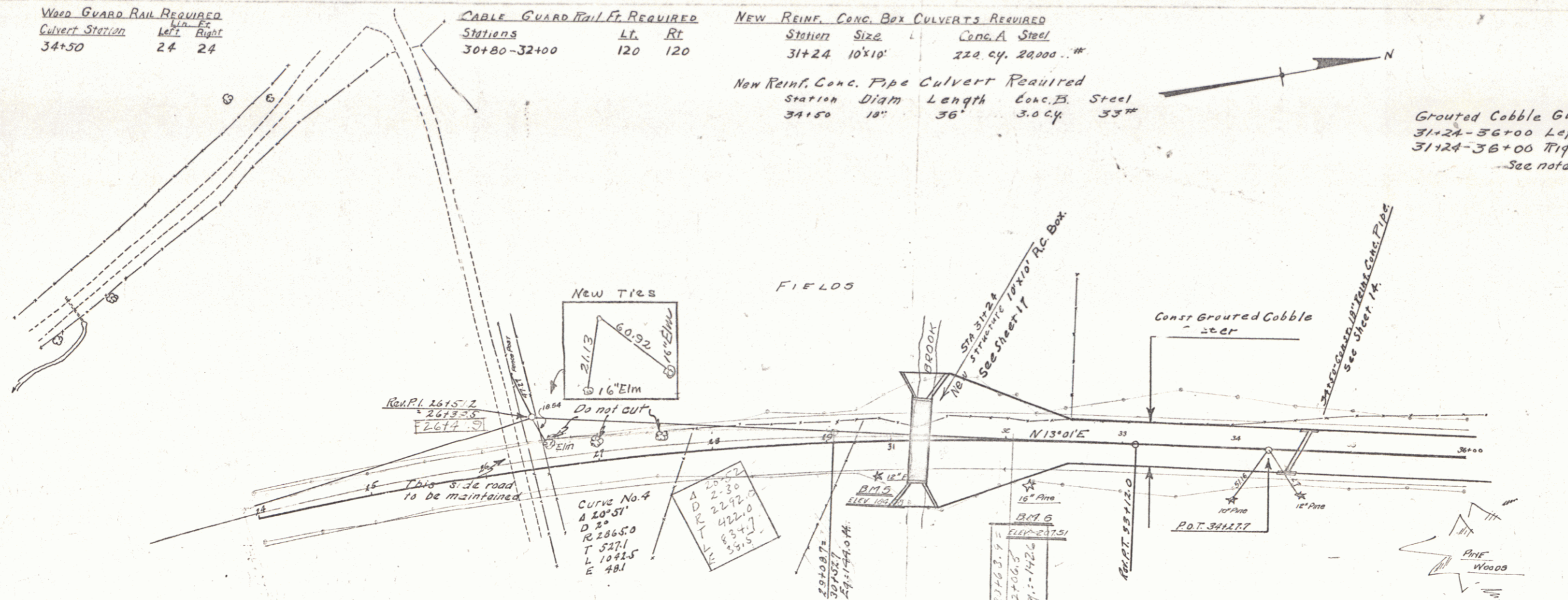
Cable Guard Rail Ft. Required
 Stations Lt. Rt.
 30+80-32+00 120 120

New Reinf. Conc. Box Culverts Required
 Station Size L Conc. Steel
 31+24 10'x10' 222 cy. 28,000 #

New Reinf. Conc. Pipe Culvert Required
 Station Diam Length Conc. Steel
 34+50 18" 36' 3.0 cy. 53 #

Part No.	Rev.	F. D.	Issue	Sheet	Total
9	10	13P	1929	6	57

Grouted Cobble Gutter Required
 31+24-36+00 Left 476.Ft. 159. Sa.Yds.
 31+24-36+00 Right 476.Ft. 159. Sa.Yds.
 See note - sheet 2



NOTE:
 FOR CORRECT GRADE STA. 24+00 - 36+00
 SEE SUPPLEMENTARY SHEET OF JULY 22, 1929.

31+5 - 10' from 30th RIGHT OF WAY 32+22 - ELEV. 207.61
 Elev. 192.61 For Description see Ntes left with 16/11/12

Series ER No 15F
 Sheet 6 of 57

5