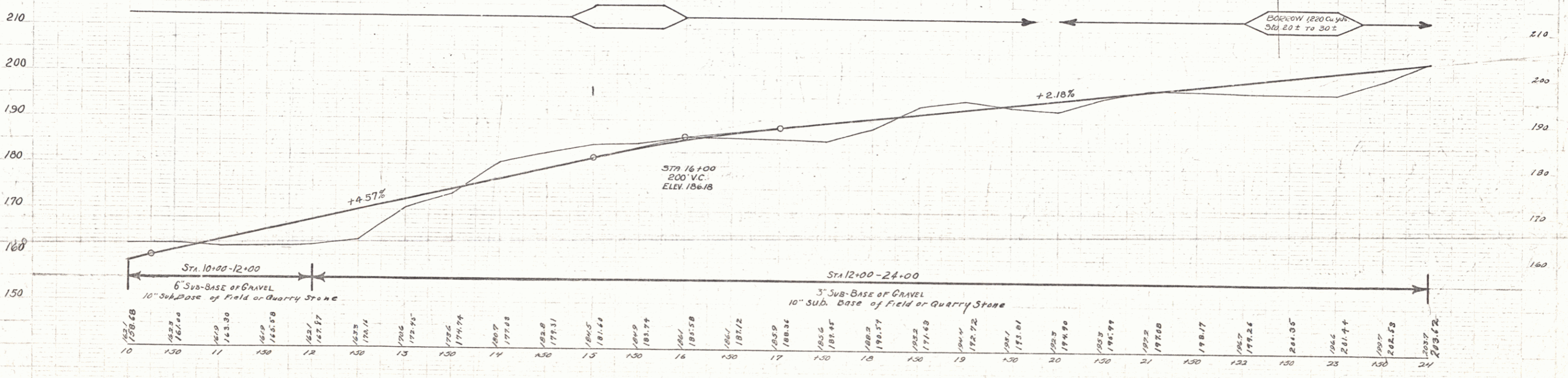
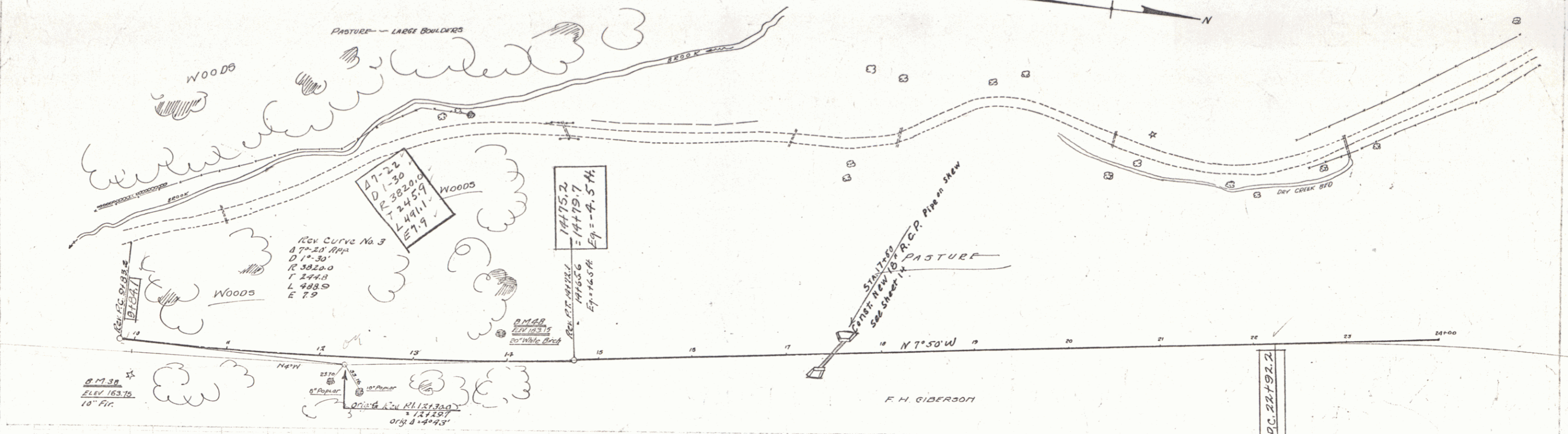


WOOD GUARD RAIL REQUIRED
 CULV. STA. 17+50
 LT. 24
 RT. 24

NEW REINF. CONC. PIPE CULVERTS REQUIRED
 Station 17+50
 Diam. 18"
 Length 36 ft
 Conc. A 1.8 c.y.
 Steel 54 lbs

Field Book No.	Sheet	E. R. Jones	Sheet No.	Total Sheets
9	107	1223	5	57



B.M. 3 B 10" Fir, Rk STA. 10. Elev. 163.75
 B.M. 4 B 20" White Birch, Lk STA. 14. Elev. 163.75
 0.17

Survey No. 151
 Sheet 5 of 57