

WOOD GUARD RAIL REQUIRED

Culv Station	LT	RT
15+59	24	-
1+76	24	-
4+26	24	-
6+79	24	-

CABLE GUARD RAIL REQUIRED

Stations	LT	RT
14+22-15+74	-	152
0+24-2+00	-	176
3+52-4+48	-	96
6+55-7+03	-	48

NEW REINF. CONG. PIPE CULVERTS REQUIRED

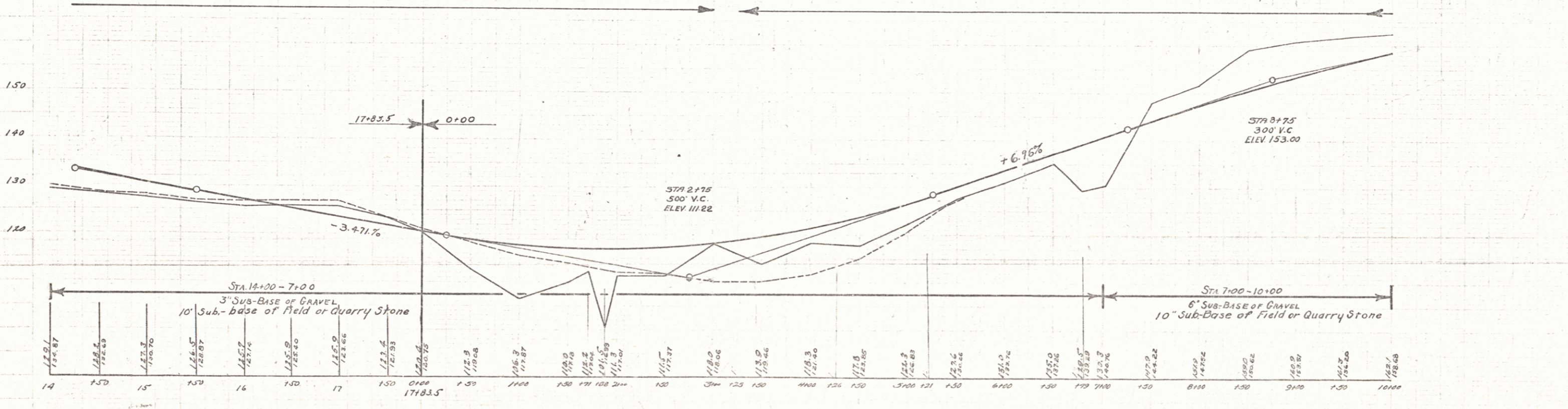
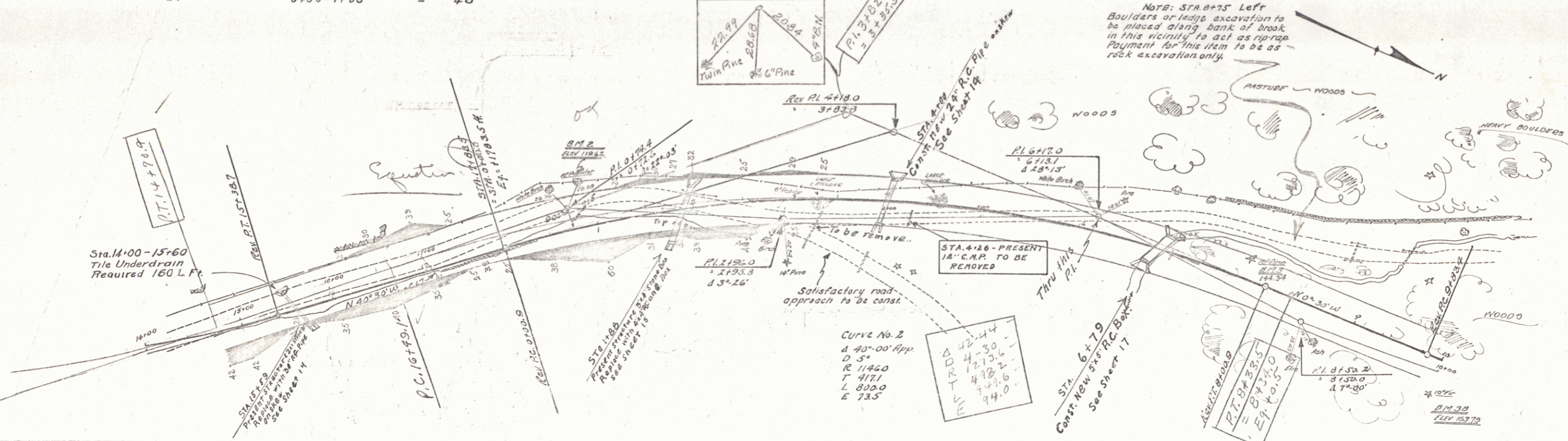
Station	Diam	Len	Conc. A	Steel
15+59	30"	44 ft	3.2 cy	58 lbs
4+00	24"	48 ft	2.4 cy	54 lbs

NEW REINF. CONG. BOX CULVERTS REQUIRED

Station	Size	Conc. A	Steel
1+88	4'x4'	33.4 cy	2229 lbs
6+79	5'x5'	37.1 cy	2552 lbs

Tile Underdrain Required
14+00-15+60 Left 180 LF

Sheet No.	Scale	F.R. No.	Sheet No.	Sheet No.
9	1/2"	157	1929	4 57



B.M. 2 10" Poplar, Lt. STA. 1+00 Elev. 119.62
 B.M. 3 10" Pine, Lt. - 7+90 Elev. 144.39
 There is another B.M. 3 located near Sta. 6+00 Elev. 129.99

Series FRAG 15E
 Sheet 37