

**WOOD GUARD RAIL REQUIRED**

Station	Left	Right
163100	24'	24'
166150	24'	24'

**CABLE GUARD RAIL REQUIRED**

Stations	Left	Right
173128-174172	144'	
173150-174178		128'

**NEW CAST IRON PIPE CULVERTS REQUIRED**

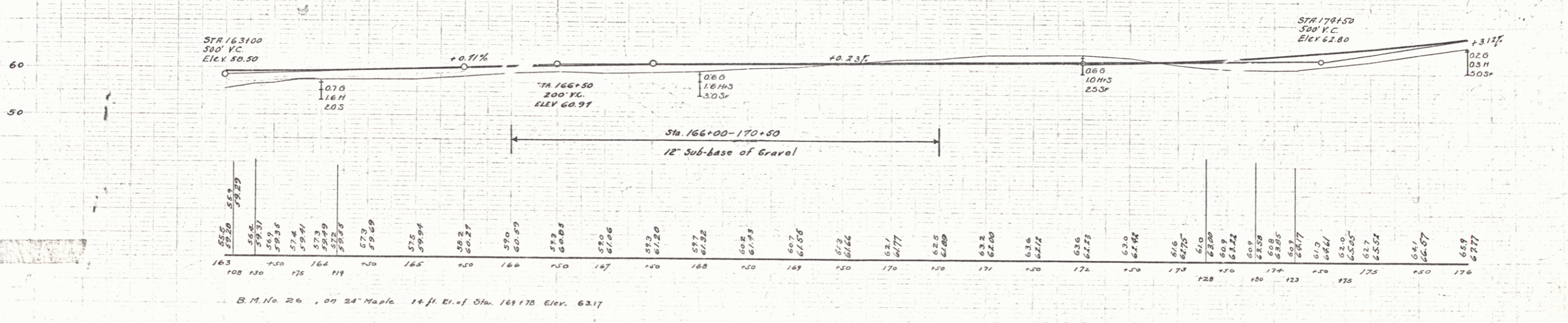
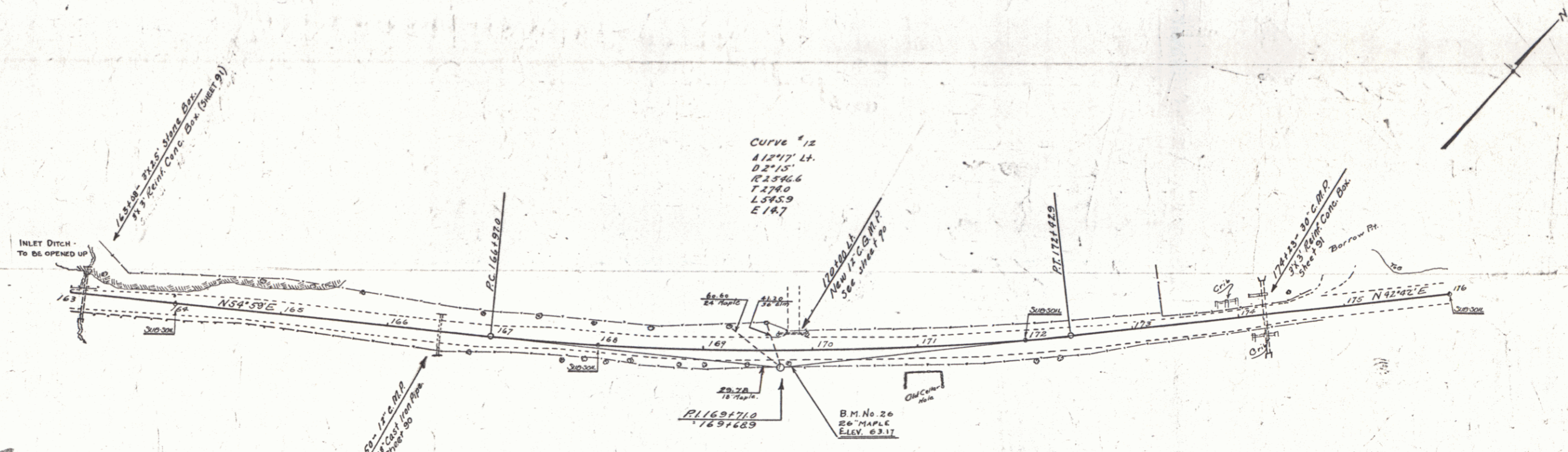
Station	Diam.	Length	Conc. R.	Conc. S.	Shd.
166150	18"	40'	3.0	4.0	33

**NEW REINFORCED CONCRETE BOX CULVERTS REQUIRED**

Station	Size	Conc. R.	Steel
163100	3'x3'	19.6	1315-12
174123	3'x3'	29.4	1982

**NEW C.G.M. DRIVEWAY PIPES REQUIRED**

Station	Side	Diam.	Length	Cem. Rub. Massing
170100	Lt.	12"	24'	23 cy



B.M. No. 26, on 24" Maple 14 ft. E. of Sta. 163178 Elev. 63.17