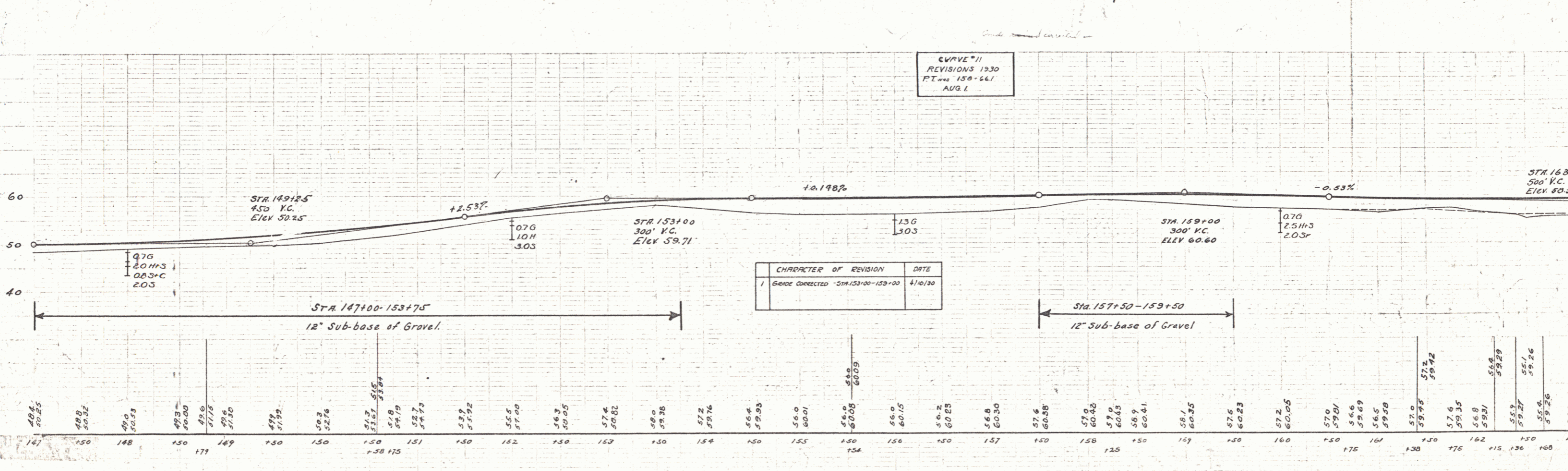
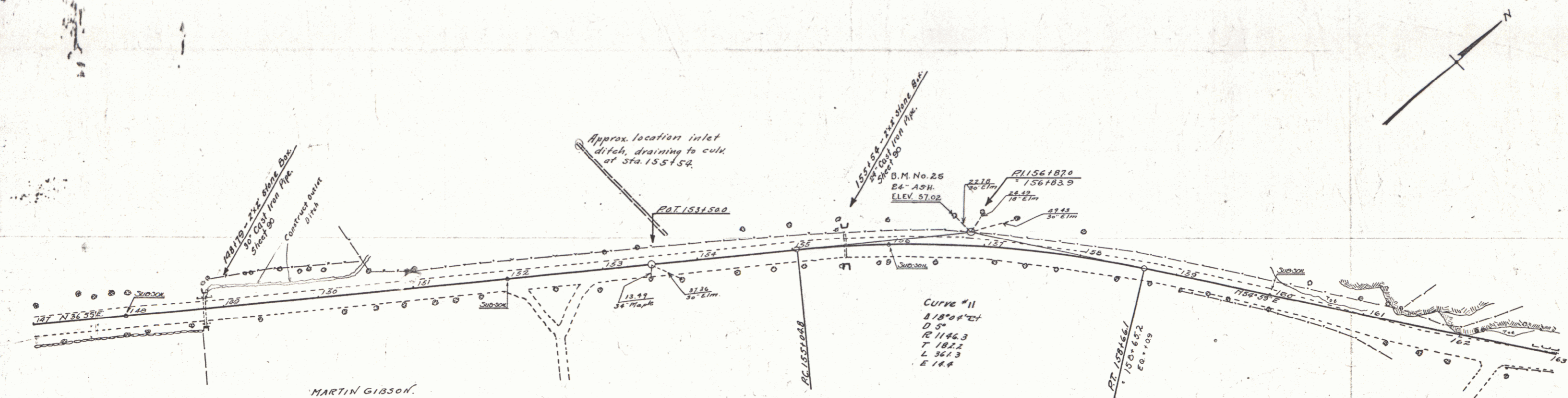


WOOD GUARD RAIL REQUIRED			CABLE GUARD RAIL REQUIRED			NEW CAST IRON PIPE CULVERTS REQUIRED				
Station	Left	Right	Station	Left	Right	Station	Diam.	Length	Conc.	Steel
188+79	24'	24'	155+54	48'	48'	148+79	30"	33'	3.2 c.y.	58"
						155+54	24"	36'	2.4	54"



B.M. No. 25 Root on 24' Ash, 32 ft. W. of Sta. 156+70 Elev. 57.02

SERIES F N 74 C Section 3 SHEET 97