

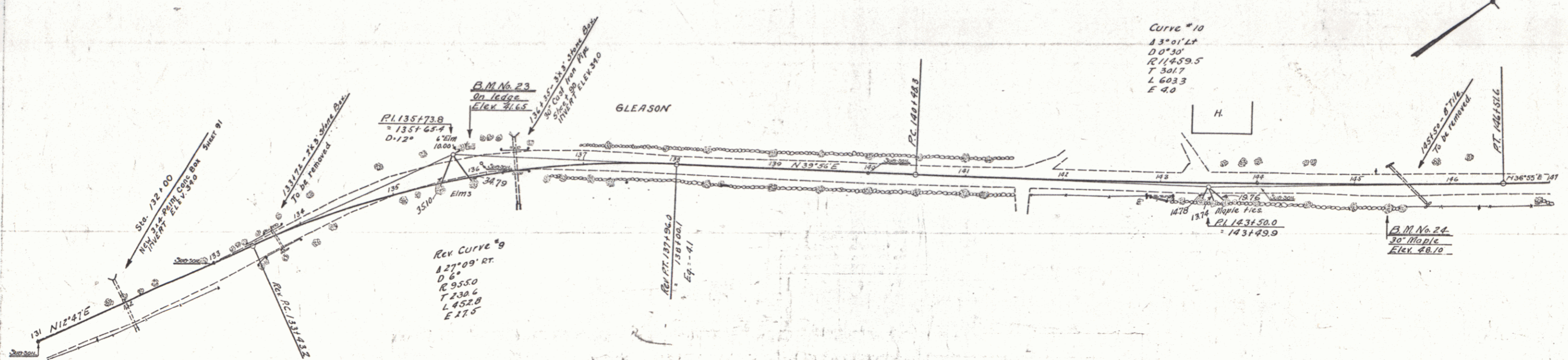
**CABLE GUARD RAIL REQUIRED**

Stations	Left	Right
131+00-137+56	656'	656'

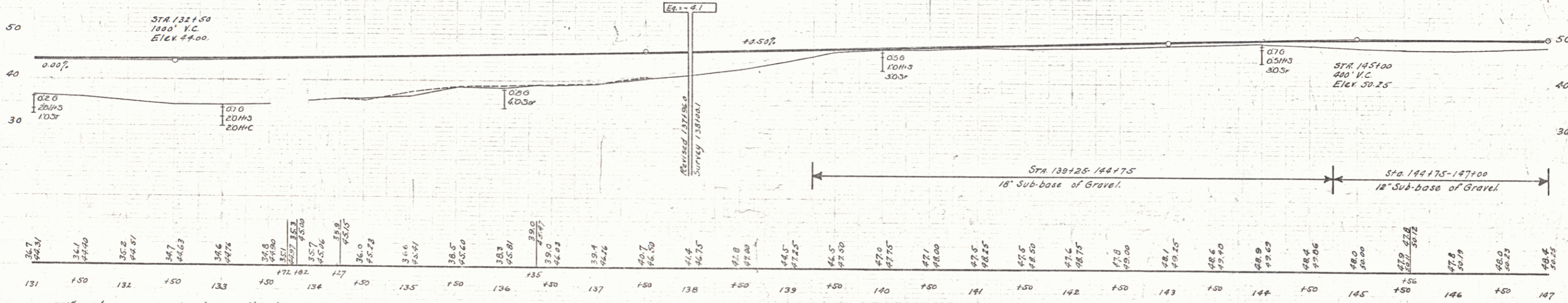
**NEW CAST IRON PIPE CULVERTS REQUIRED NEW REINFC CONC BOX CULVERTS REQUIRED**

Stations	Size	Length	Conc. A	Steel	Station	Size	Conc. B	Steel
136+35	30"	75'	3.2 cy.	58#	132+00	3x4'	28.1 cy.	189#

STATE ROAD NO. YEAR NO. SHEET  
 74C 1930 63 57



**NOTE**  
 THE MATERIAL USED FOR FILL BETWEEN STA 131+50 AND STA 140+50 IS TO BE PAID FOR AS BORROW STA 121+15 TO STA 140+50. EXCEPT AS COVERED BY NOTE (SHEET 67), THE MATERIAL USED IN THE FORMATION OF THESE EMBANKMENTS SHALL BE AN APPROVED BORROW. THIS BORROW TO CONTAIN NOT IN EXCESS OF 10% TO 15% OF MATERIAL PASSING A 200-MESH LABORATORY SIEVE. THE EMBANKMENTS SHALL BE PUDDLED IN AN APPROVED MANNER DURING THEIR CONSTRUCTION.



Sta	Elev	Sta	Elev	Sta	Elev	Sta	Elev	Sta	Elev	Sta	Elev	Sta	Elev	Sta	Elev	Sta	Elev	Sta	Elev
131	44.31	132	44.40	133	44.57	134	44.63	135	44.74	136	44.81	137	44.86	138	44.91	139	44.95	140	44.98
141	45.00	142	45.03	143	45.05	144	45.06	145	45.07	146	45.08	147	45.09						

BM #23 Sta 135+95 Point on ledge 30 ft left Elev 44.65  
 BM #24 Sta 145+35 30 Maple 21 ft right Elev 48.10

SERIES E No 74C  
 Section 9  
 SHEET 60 OF 97