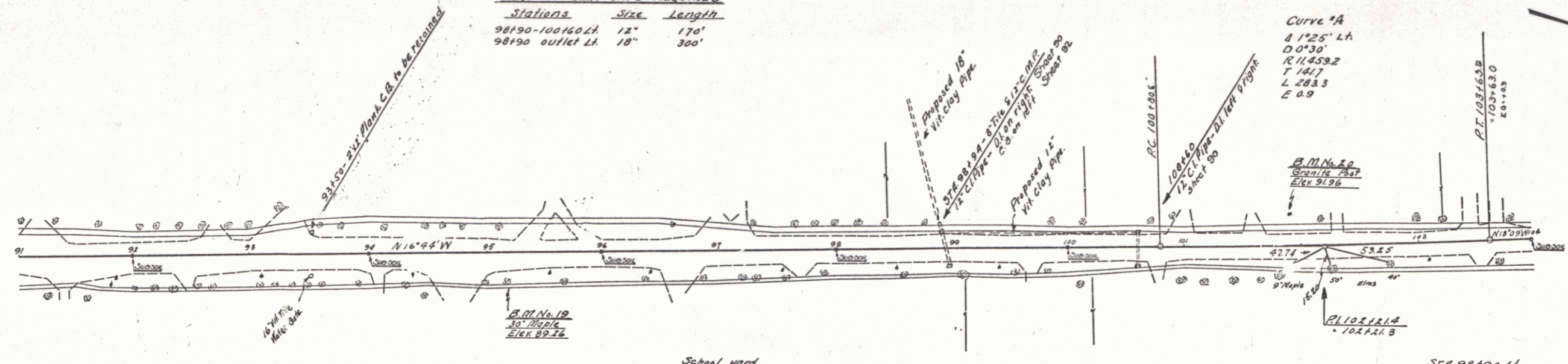


NEW CAST IRON PIPE CULVERTS REQUIRED BRICK CATCH BASINS REQUIRED

| Station | Diam | Length | Cons. | Steel | DL | Station | Side |
|---------|------|--------|-------|-------|----------|---------|------|
| 98194 | 12" | 40' | 18 cy | 157' | 1 grate | 98194 | Lt |
| 100160 | 12" | 39' | 36 | 152' | 2 grates | | |

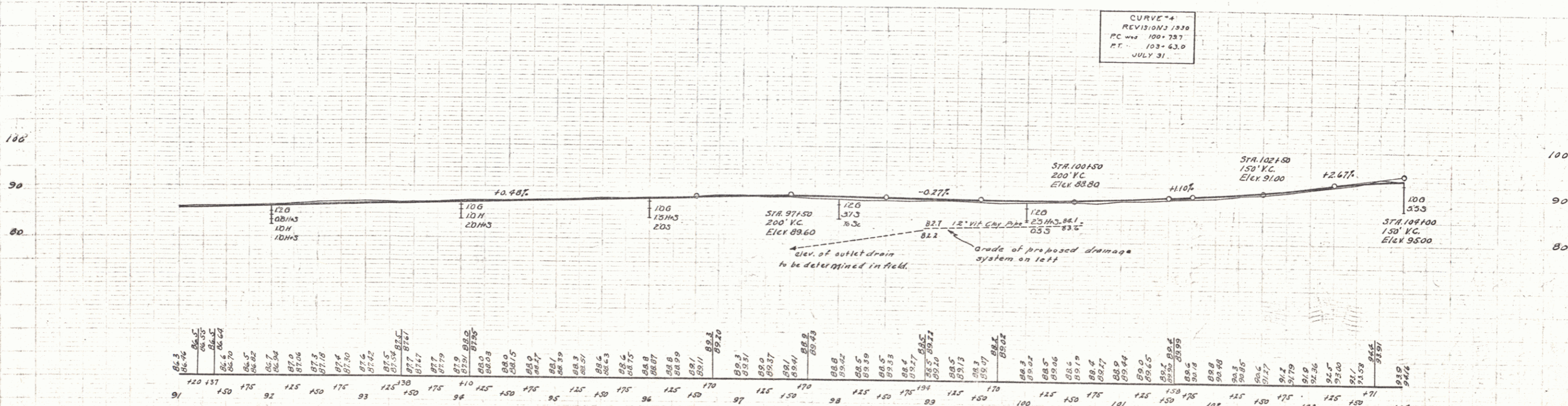
NEW VIT. CLAY PIPE REQUIRED

| Stations | Size | Length |
|-----------------|------|--------|
| 98190-100160 Lt | 12" | 170' |
| 98190 outlet Lt | 18" | 300' |



It is believed that there is an existing tile outlet at this location. If the same is found to be in satisfactory condition, it is to be retained as the outlet for the new culverts. Should this tile be found in an unsatisfactory condition, broken pipe shall be replaced with new Vit. Clay Pipe.

CURVE #4
 REVISION 1930
 PC = 100+73.7
 PT = 103+63.0
 JULY 31



BM #10 Sta 95+10 30" Maple 22fl. right Elev 89.26
 BM #20 Sta 101+96 8"x8" Granite post 25fl. left Elev 91.86