

NEW CAST IRON PIPE CULVERTS REQUIRED					OTHER DROP INLETS REQUIRED					BRICK CATCH BASINS REQUIRED				
Station	Diam.	Length	Concr. A.	Steel DL	Station	Side	Concr. A.	Steel	Grates	Station	Side	Station	Side	
78166	12"	32'	3.9cy	198"	20-in	77185	RA	1.5cy	99"	1	85115	LA		
80106	12"	30'	2.8	198"	2	84113	RA	1.0	99"	1	86155	LA		
81130	12"	36'	2.8	198"	2	80109	RA	1.4	99"	1	87150	LA		
82101	12"	33'	4.1	198"	2									
83173	12"	44'	1.8	99"	1									
89115	12"	76'	1.5	99"	2									

WOOD GUARD RAIL REQUIRED

Station	Left	Right
84124		48'

NEW VIT. CLAY PIPE REQUIRED

Stations	Size	Length
84125-85125	18"	100'
85125-86155	18"	130'
86155-87150	15"	96'
87150-89140	12"	190'

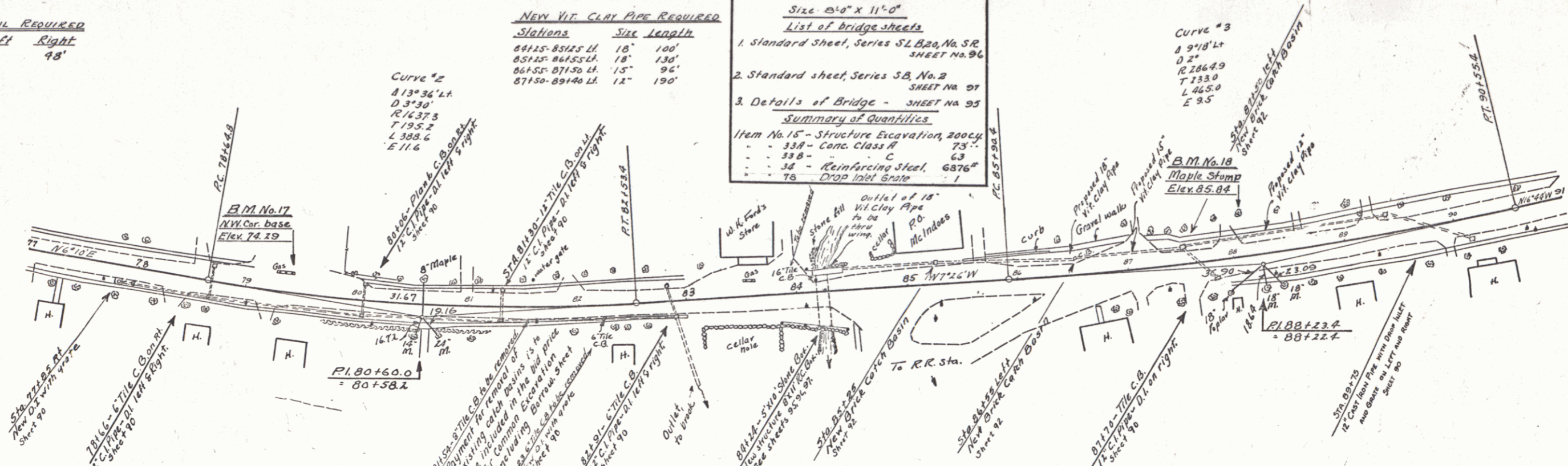
BRIDGE STR. 84124
Size 21'0" x 11'0"

List of Bridge sheets

- Standard sheet, Series SL B20, No. 52, SHEET NO. 96
- Standard sheet, Series SB, No. 2, SHEET NO. 97
- Details of Bridge - SHEET NO. 95

Summary of Quantities

Item No. 15 - Structure Excavation, 200cy	338	Conc. Class 18	73'
- 38	-	C	63
- 38	-	Reinforcing Steel, 6876'	-
- 78	-	Drop Inlet Grate	1

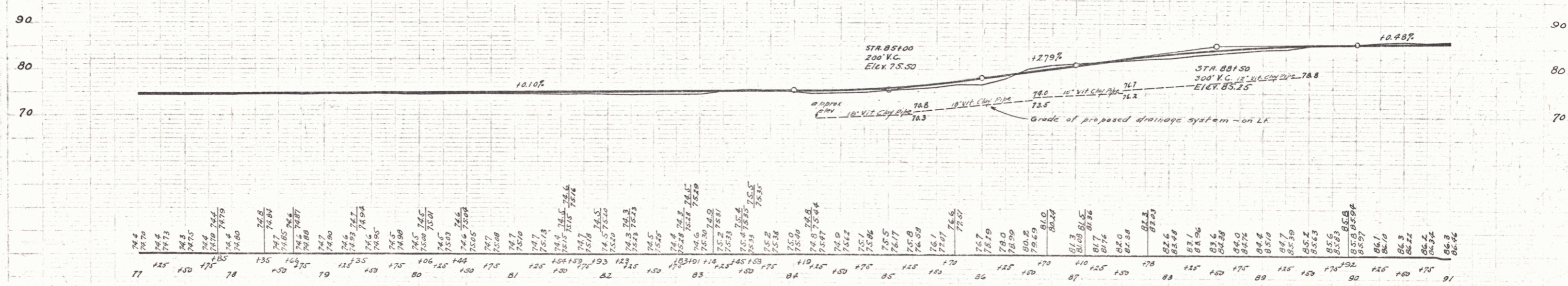


NOTES AS TO DRAINAGE SYSTEM

Drop inlets Sta. 78+66, 80+07, 81+30, 82+17, 83+17, 84+12, 85+12, 86+15, 87+15, 88+15, 89+15, 90+15, 91+15 are to be constructed so that present drainage system may be utilized as far as possible. The engineer may find it necessary to rely existing pipes.

Sta. 77+00-100+00

Locations and elevations of proposed catch basins and drop inlets may be varied to fit field conditions as determined by the Engineer.



Sta.	Elev.	Sta.	Elev.	Sta.	Elev.	Sta.	Elev.	Sta.	Elev.	Sta.	Elev.	Sta.	Elev.	Sta.	Elev.	Sta.	Elev.	Sta.	Elev.										
77	74.6	78	74.7	79	74.8	80	74.9	81	75.0	82	75.1	83	75.2	84	75.3	85	75.4	86	75.5	87	75.6	88	75.7	89	75.8	90	75.9	91	76.0

BM #17 Sta. 79+12 N.W. corner base 19ft left Elev. 74.23
 BM #18 Sta. 80+07 35' Maple stump 33ft left Elev. 85.04

REVISIONS APRIL 1930
 379 B4+24 BRIDGE RAIL ADDED ON RIGHT
 AND QUANTITIES REVISED.

SERIES F No. 74-C
 Section 3
 SHEET 64 OF 87