

**WOOD GUARD RAIL REQUIRED**

Station	Left	Right
74+67	24'	24'

**NEW CAST IRON PIPE CULVERTS REQUIRED**

Station	Diam	Length	Cross. A.	Steel	D.I.	Re-cast Top
74+67	18"	30'	2.3 cy.	104"	1	1

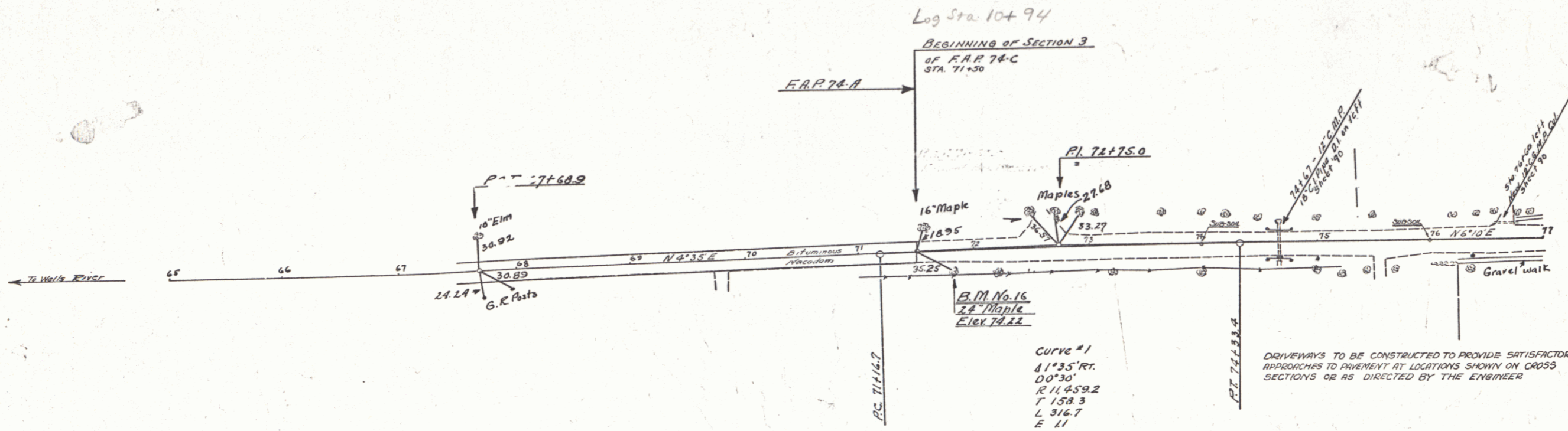
**NEW C.G.M. DRIVEWAY PIPES REQUIRED**

Station	Side	Diam.	Length	Cement Rubble Masonry
74+60	Lt.	12"	24'	2.3 cy.

FED. ROAD DIST. NO. STATE FEDERAL FISCAL YEAR SHEET NO. AN  
 8 VT. 74C 1930 63 97

S.E. Ashmun  
1929

S.E. Ashmun  
1929

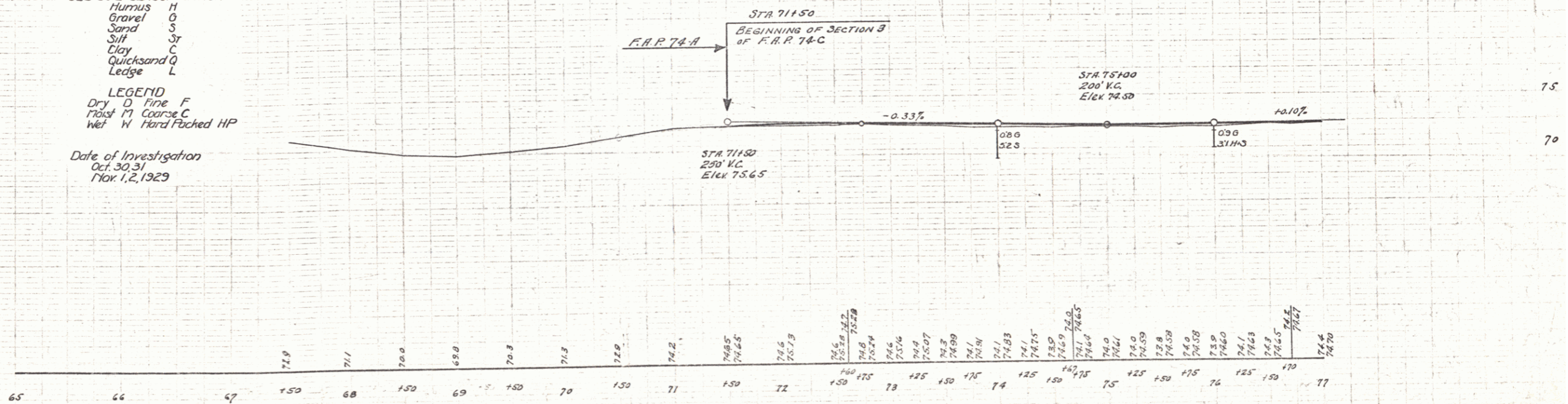


DRIVEWAYS TO BE CONSTRUCTED TO PROVIDE SATISFACTORY APPROACHES TO PAVEMENT AT LOCATIONS SHOWN ON CROSS SECTIONS OR AS DIRECTED BY THE ENGINEER

- SUB-SOIL CLASSIFICATION**
- Humus H
  - Gravel G
  - Sand S
  - Silt ST
  - Clay C
  - Quicksand Q
  - Ledge L

- LEGEND**
- Dry D Fine F
  - Moist M Coarse C
  - Wet W Hard Packed HP

Date of Investigation  
 Oct. 30, 31  
 Nov. 1, 2, 1929



B.M. No. 16 Sta. 74+62 24' Maple 17 ft. right Elev. 74.22

SERIES F No. 74-C  
 Section 3  
 SHEET 6 OF 97