

Wood Guard Rail Required

Station	Left	Right
195196	24	24
205100	24	24

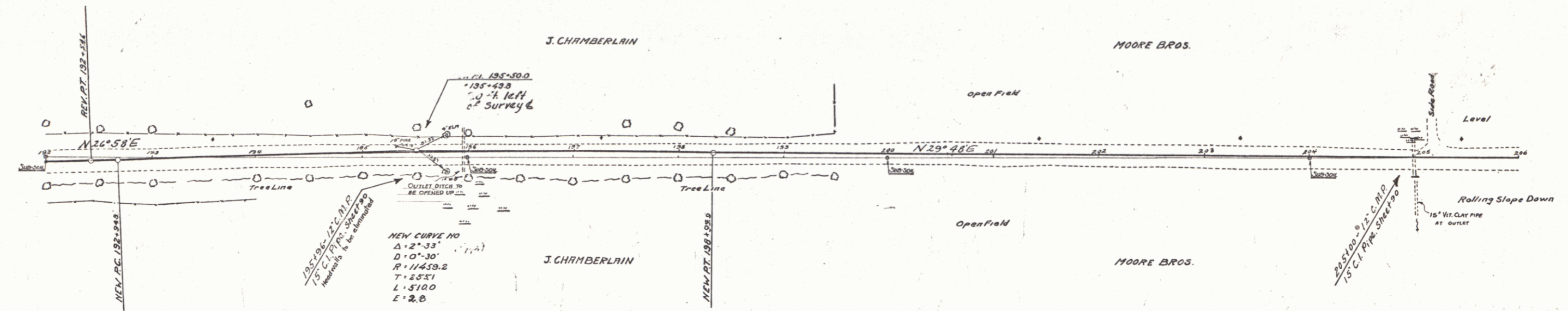
NEW CAST IRON PIPE CULVERTS REQUIRED

Station	Diam	Length	Conc. C.	Steel
195196	15"	40'	n/a	Headwalls
205100	15"	36'	2.3cy.	33"

NEW VIT. CLAY PIPE REQUIRED

Station	Diam	Length
205100 R/L	15"	40'

FED. ROAD DIST. NO.	STATE	FISCAL YEAR	SHEET NO.	TOTAL SHEETS
9	VT	1931	49	97



STA 1971.50-1961.50
Left and Right
Slope = 1 on 2 1/2

CURVE*
REVISIONS 1230
PC = 192.464
PT = 198.312
Δ = 2° 30'
T = 203.4
L = 244.6
E = 3.6
JULY 31

