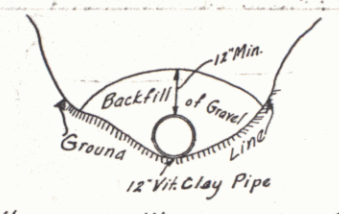


**CABLE GUARD RAIL REQUIRED**

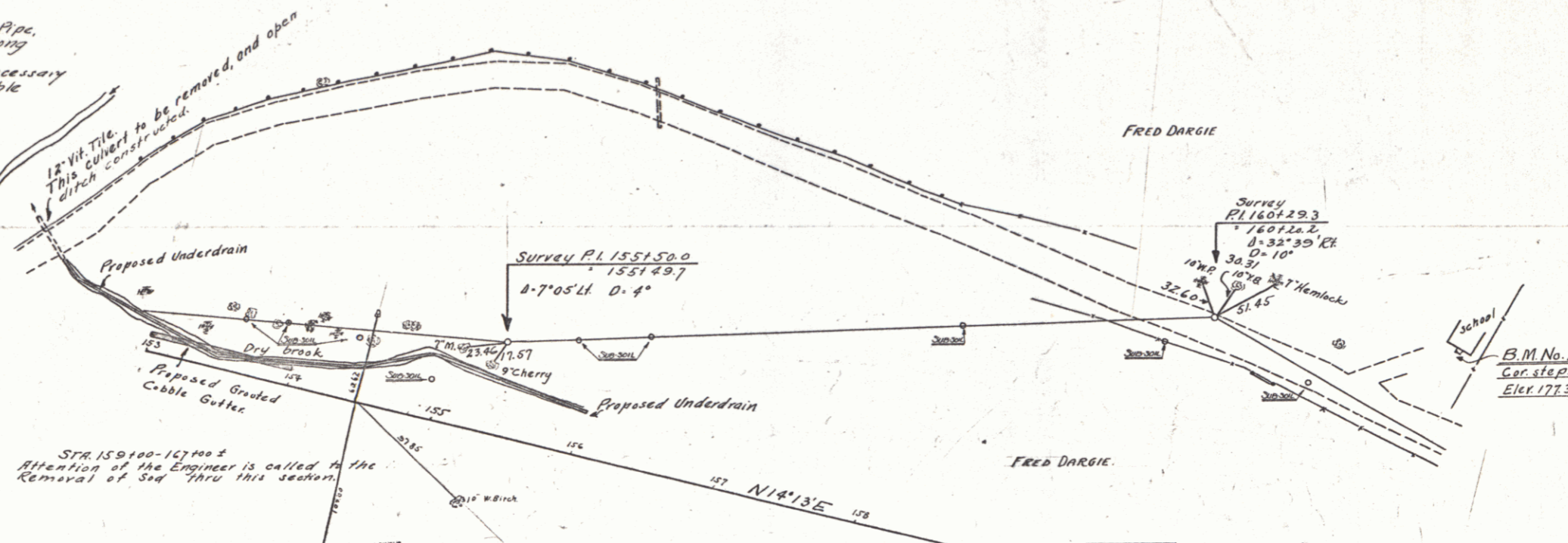
Stations	Left	Right
153100-153129	29	-

SECTION	STATE	FISCAL YEAR	SHEET NO.	TOTAL SHEETS	GRADED CABLE GUTTER REQUIRED
74C	PA	1930	46	97	Stations 153100-154100 Width 1'-6" Length 100' Area 28 sq. ft.

Sta 152100 - 154100 Lt.  
Standard Underdrain with 12" Vit. Clay Pipe, as shown on sketch below is to be laid along the existing stream bed before filling is commenced, if this measure is deemed necessary by the Engineer to take care of all possible Seepage Conditions through this section. If, however, it is found that a surface ditch will adequately take care of the drainage, a Grouted Cable Gutter is to be constructed along the ditch line.

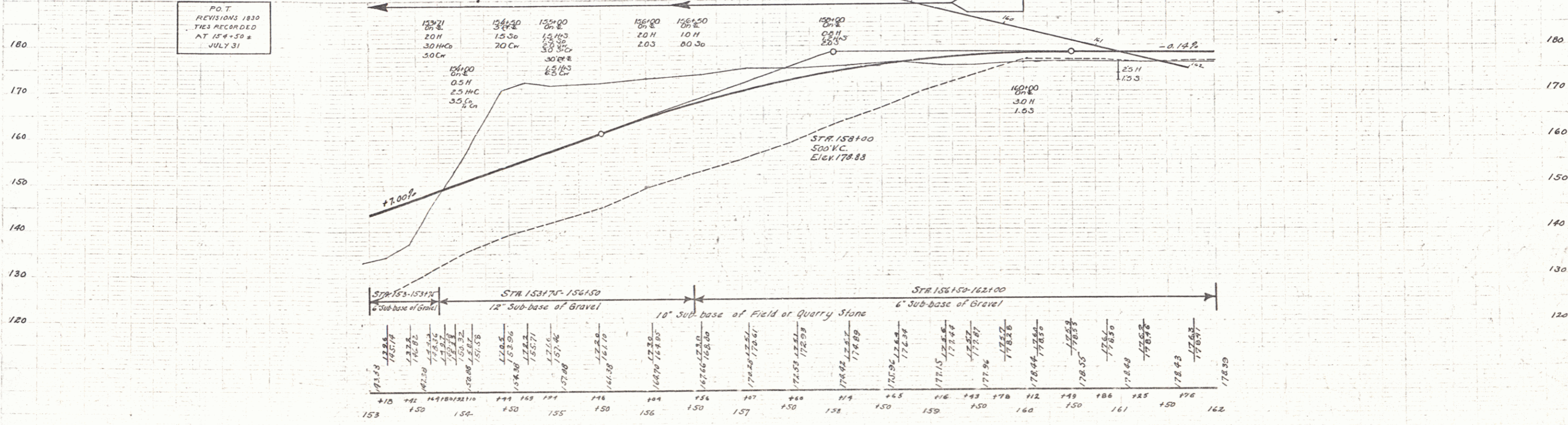


STD. UNDERDRAIN WITH 12" VIT. CLAY PIPE (Modification of Item 65-A)  
Joints in underdrain in seepage area to be left open and wrapped in burlap. Remaining joints to be caulked with cement mortar. Backfill of Gravel, Caulking of Pipe and Wrapping with Burlap to be included in unit price bid per lin. ft. for Standard Underdrain with 12" Vitrified Clay Pipe.



STR 153100-153100 ±  
Attention of the Engineer is called to the Removal of Sand thru this section.

P.O.T. REVISIONS 1930 TIES RECORDED AT 154-30 ± JULY 31



B.M. No. 20 S.E. Corner of schoolhouse steps, left sta. 16 + 70 Elev. 177.39

SERIES F No. 74-C Sec. 2 SHEET 46 OF 97