

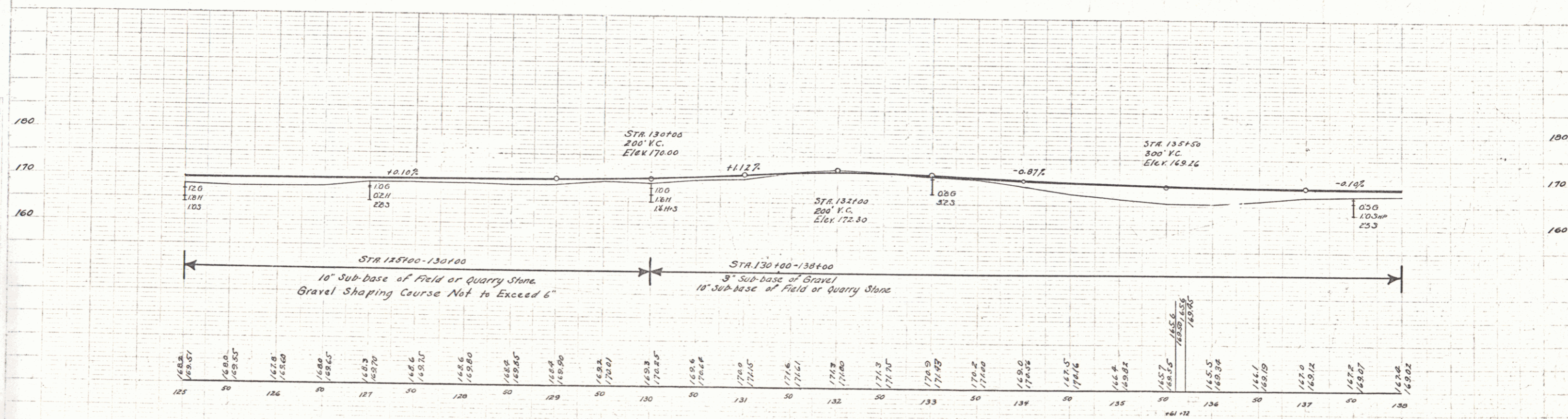
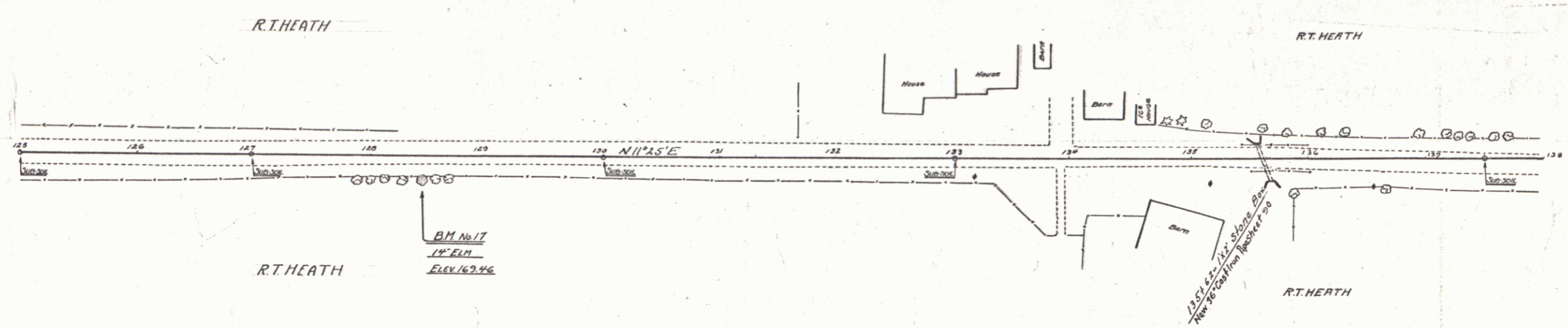
CABLE GUARD RAIL REQUIRED

Station	Left	Right
135+62	48	48

NEW CAST IRON PIPE CULVERTS REQUIRED

Station	Diam	Length	Cone. CLP	Steel
135+62	36"	42 ft	40 CF	50 lbs

FED. ROAD DIST. NO. STATE PROJ. NO. YEAR SHEET NO. TOTAL SHEETS
 VT. 74-C-1936 44 97



B.M. No. 17 - 14' ELM 17 RT. OF STA. 126+43 ELEV. 169.46

SERIES F No. 74-C Sec. 2
 SKETCH OF 97