

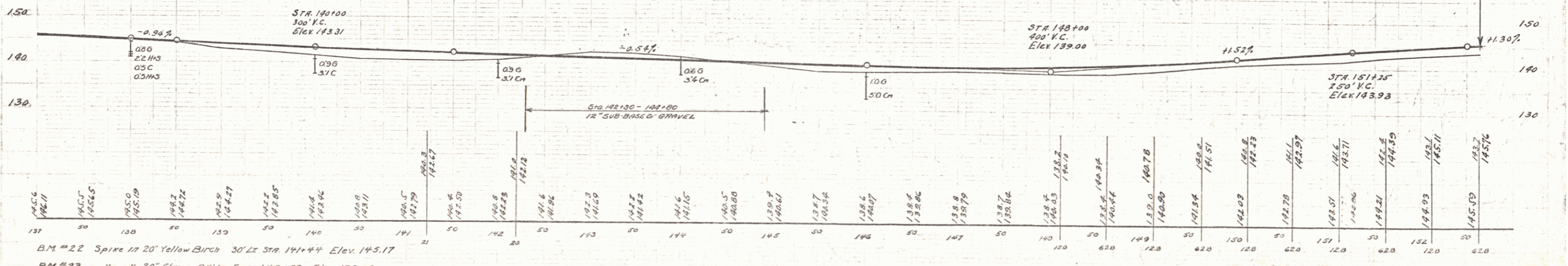
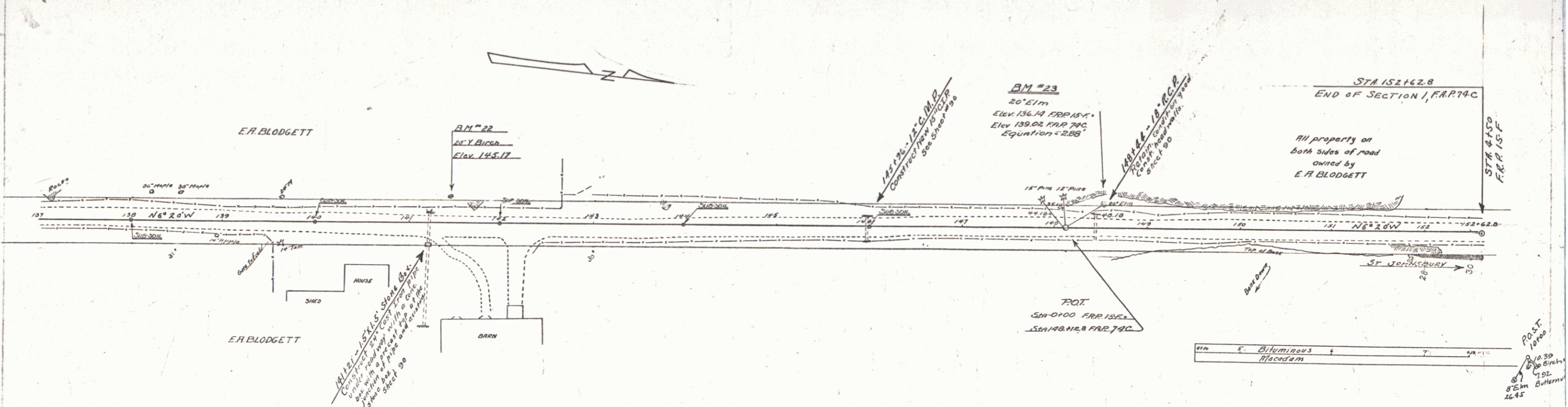
WOOD GUARD RAIL REQUIRED

Station	Left	Right
141+21	24'	-
145+96	24'	24'
148+44	24'	24'

NEW CAST IRON PIPE CULVERTS REQUIRED

STATION	DIAM.	LENGTH	CONC'D	CONC'D	STEEL
141+21	24"	36'	3.12K	-	184#
145+96	15"	40'	0.8	2.3	33#
148+44	18" (in place)	-	-	1.5	40#

FIELD BOOK STATE OF NEW YORK
 14-C. 1930 13 27



BM #22 Spike in 20" Yellow Birch 30' Lt. Sta. 141+44 Elev. 145.17
 BM #23 " " 20" Elm 24' Lt. Sta. 140+52 Elev. 139.02
 (B.M. O. of 15F Elev. 136.14)

SERIES F No 770 Sec 1
 SHEET 13 of 27