

WOOD GUARD RAIL REQUIRED

Station	Left	Right
125+41	24'	-
130+25	24'	-

CABLE GUARD RAIL REQUIRED

Stations	Left	Right
125+10 - 126+14	-	104'
130+12 - 132+12	-	200'

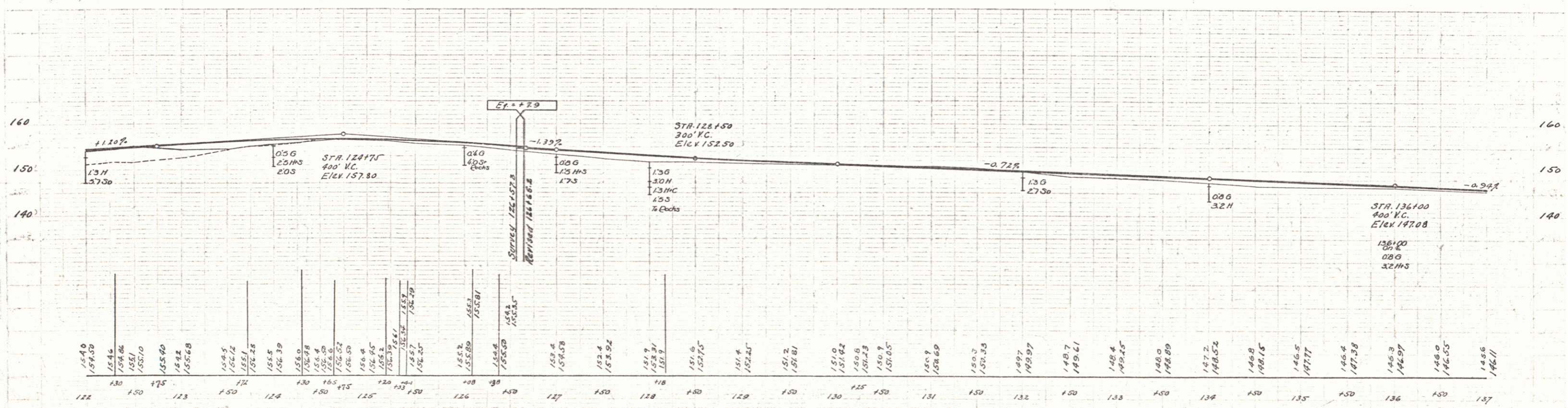
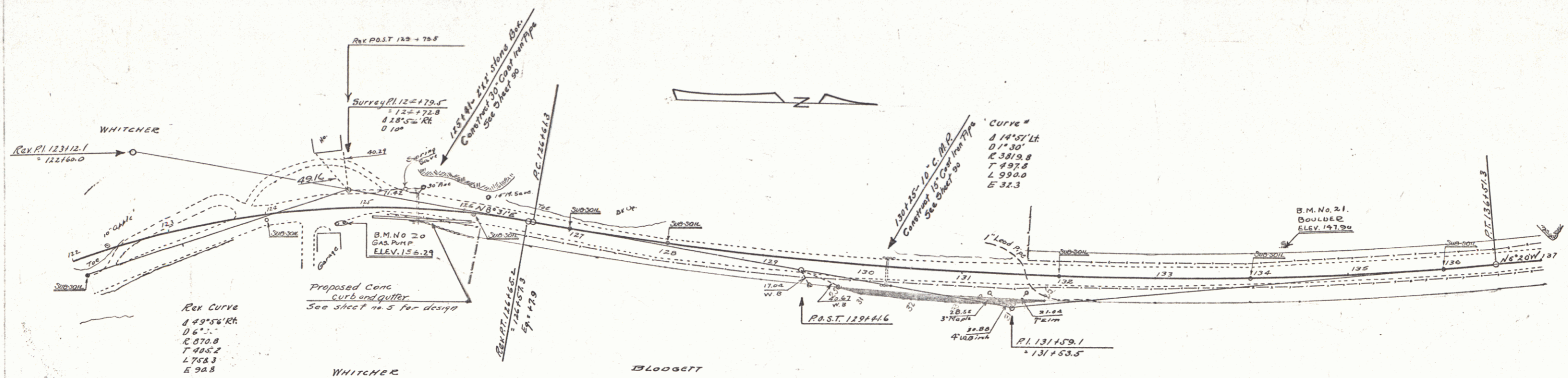
NEW CAST IRON PIPE CULVERTS REQUIRED

Station	Diem	Length	Conc. P	Conc. C	Steel
125+41	30"	44'	3.2cy.		58"
130+25	15"	40'		2.3cy.	33"

CONCRETE CURB & GUTTER REQUIRED

Station	Width	Length	Conc. P	Steel
125+10 - 126+10	2' R/L	100'	6.4CY	266"

STATE OF CALIFORNIA
 DIVISION OF HIGHWAYS
 PROJECT NO. 14-C 1936 12 27



DESIGNED BY H. C. B. / SHEET 12 OF 27