

WOOD GURKO RAIL REQUIRED

Station	Left	Right
1071.54	24'	
1191.26	24'	24'
1161.00	24'	24'

NEW CAST IRON PIPE CULVERTS REQUIRED

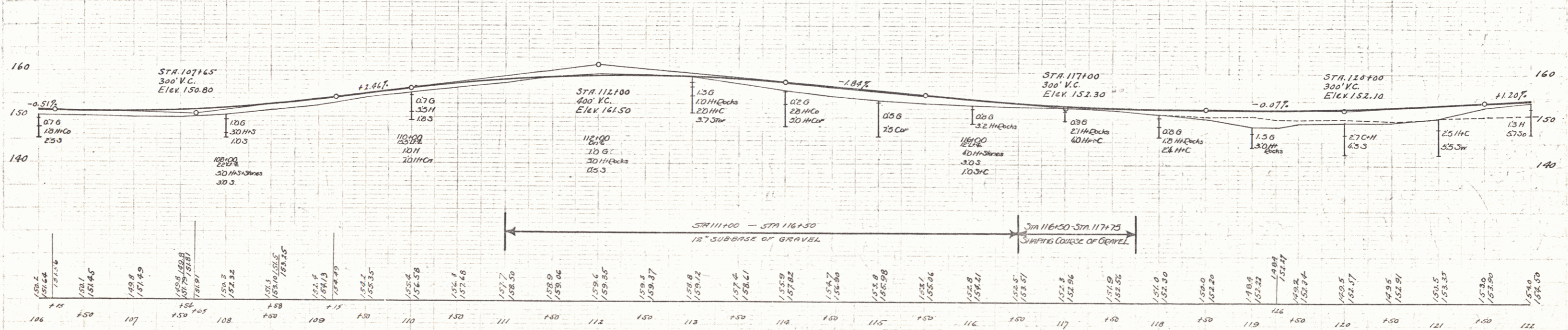
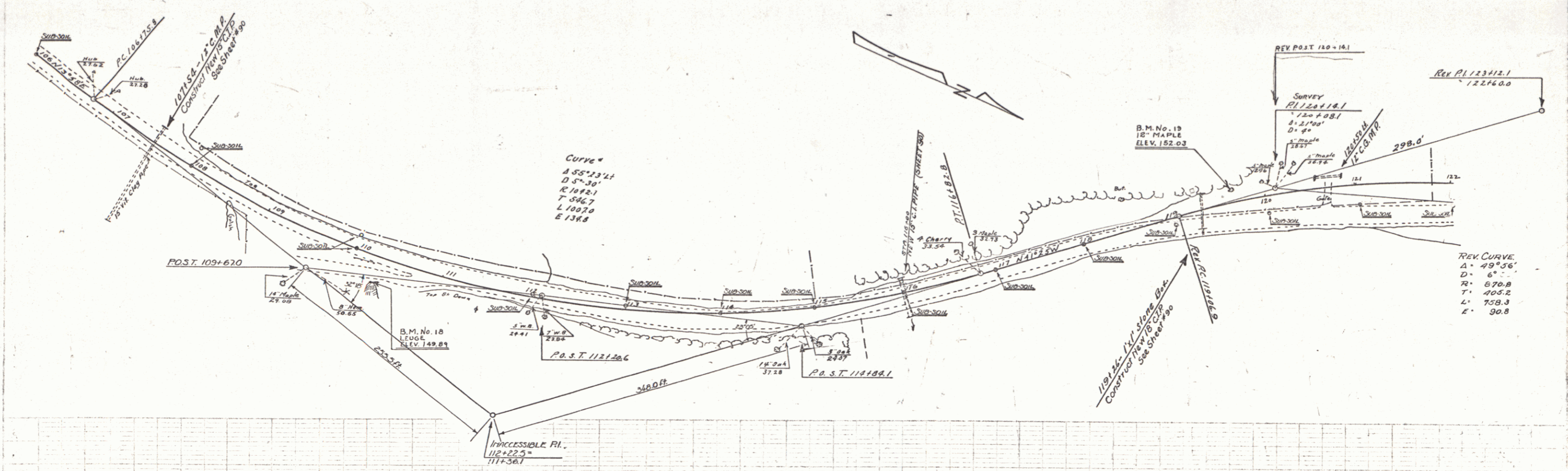
Station	Dist	Length	Conc ⁿ	Steel
1071.54	15"	40'	—	23C1 33"
1191.26	18"	40'	—	30C1 33"
1161.00	15"	44'	—	23C1 33"

NEW VITRIFIED CLAY PIPE REQUIRED

Station	Elev. at	Diam	Length
1071.54	RT	15"	80'

DEVELOP PIPE CULVERTS PROPOSED
 (WOOD GURKO RAIL)
 STA 1071.54 TO 1161.00
 12" DIA. 12' DIA. 2.3C1

10 PLAN DATE 1936 11 27
 DIST. NO. 74C
 YEAR 1936 11 27



B.M. No. 18 Top of Ledge by Tel. Pole, 24' Rt. of Sta. 1101.27, Elev. 149.89
 B.M. No. 19 Spike 10 Foot of 12' Maple, 11' Lf. - - - 1191.66, - - - 152.03