

WOOD GUARD RAIL REQUIRED

Station	Left	Right
95167	29'	-

CABLE GUARD RAIL REQUIRED

Stations	Left	Right
94196-96100	-	100'

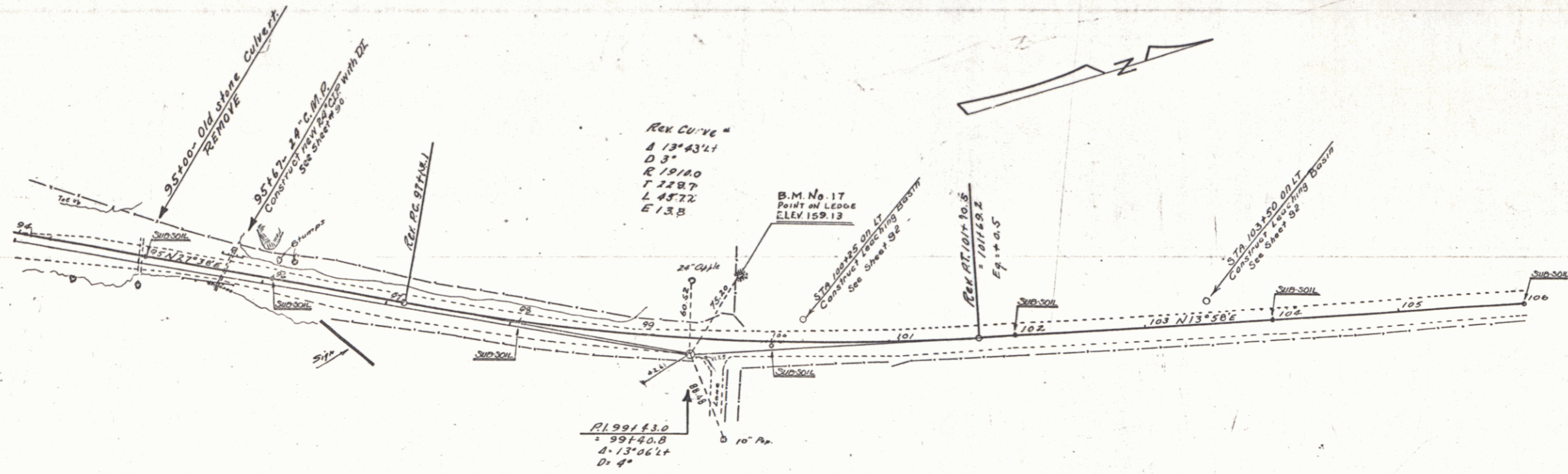
NEW CAST IRON PIPE CULVERTS REQUIRED

Station	Diem	Length	Conc. %	Steel	DI	Proposed	Top
95167	24"	39	2.80%	18"	1	1	1

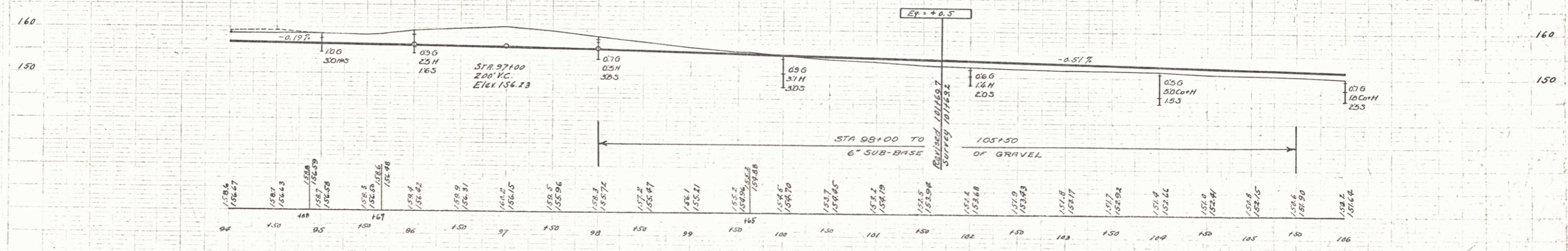
NEW LEACHING BASINS REQUIRED

STATION	LT	RT
100+25	LT	
103+50		LT

ED. ROAD STATE DIST. NO. 74-C 1936 10 97



CURVE #18
 REVISIONS 1930
 PC = 97+14.1
 PT = 101+43.7
 Δ = 131.40
 R = 1910.1
 T = 220.9
 L = 455.6
 E = 13.7
 JULY 31



B. M. No. 17 Point on Ledge by fence Sta. 99+80 Elev. 159.13

7