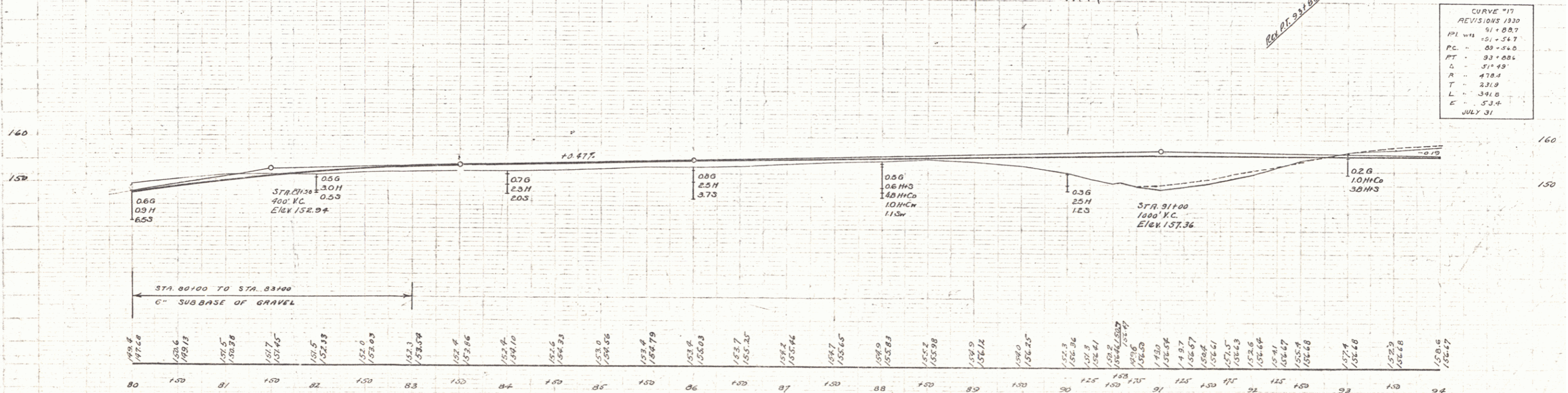
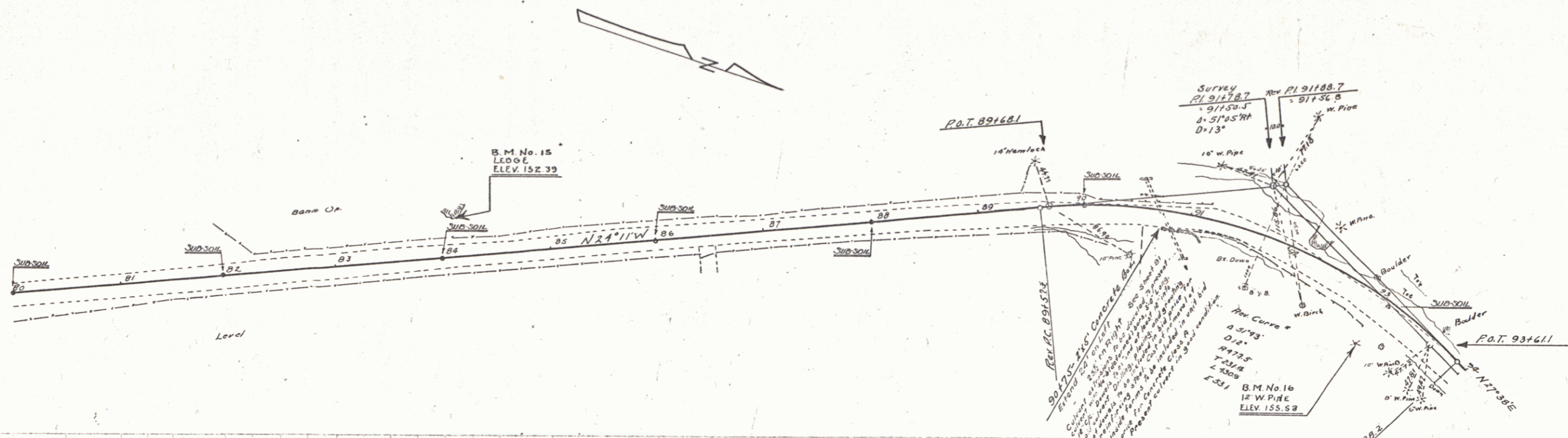


**CABLE GUARD RAIL REQUIRED**

Stations	Left	Right
90+00-92+00	200'	-
90+25-92+89	-	264'

**CULVERT EXTENSIONS REQUIRED**  
 STATION SIZE 12' x 12' 6" COIL C<sup>2</sup> STEEL  
 90+15 215' 24' 25% 242CX 1878"

FED. ROAD DIST. NO. STATE PROJ. NO. YEAR SHEET NO. TOTAL SHEETS  
 5 VI. 74C 1930 9 97



**CURVE #17**

REVISIONS	1930
PI	91+08.7
PC	89+08.6
PT	93+08.6
R	478.9
T	231.9
L	341.8
E	57.6
	JULY 31

B.M. No. 15, Point on 15' Ledge 36' Lf Sta. 84+10 Elev. 152.39  
 B.M. No. 16, Spike in roof of 12" Pipe 45' RA " 93+06 " 155.53