

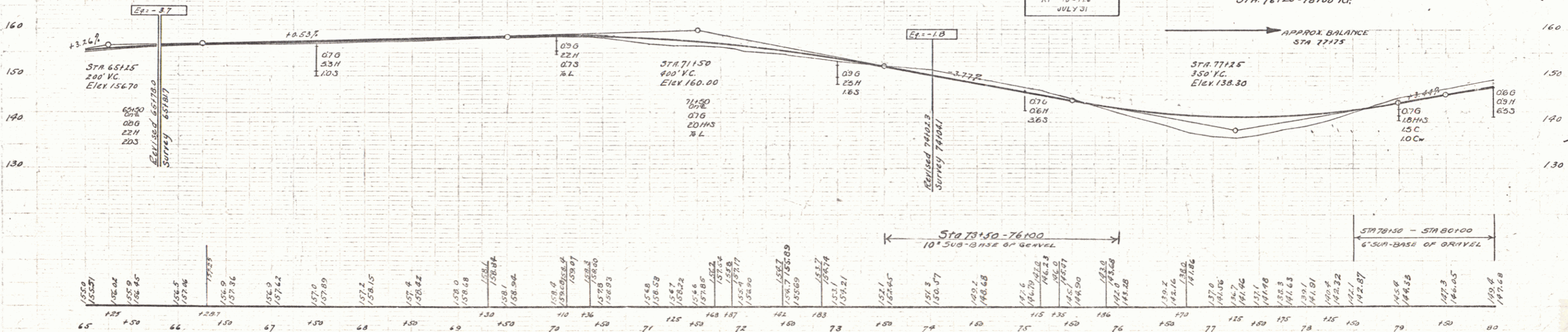
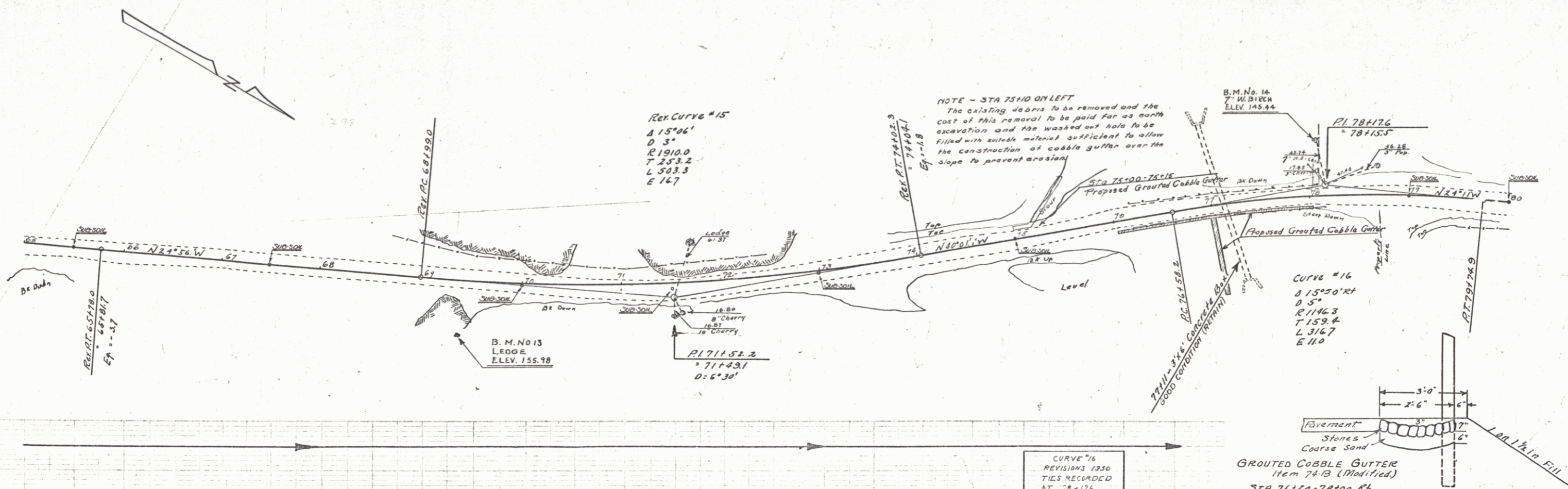
**CABLE GUARD RAIL REQUIRED**

Stations	Left	Right
76120-78120	200'	200'

**GROUTED COBBLE GUTTER REQUIRED**

STATION	LEADER	WIDTH	LENGTH	AREA
76100-76175	2"	4'	75'	335.9 sq ft
76175-77100	Runoff	4'	80'	156
77100-78100	Runoff	4'	80'	356
78100-78100	RA	2.5'	200'	506

FED. ROAD STATE DIST. NO. YEAR SHEET NO. 74C 1930 8 97



B.M. No. 13 Point on Ledge 58' RI Sta. 69+38 Elev. 155.98  
 B.M. No. 14 Spike in root of T.W. Birch 57' L Sta. 78103 Elev. 145.44

CURVE #16 REVISIONS 1930 TIES RECORDED AT '78-176 JULY 31