

**WIDE GUARD RAIL REQUIRED**

Station	Left	Right
62130	26'	-

**CABLE GUARD RAIL REQUIRED**

Stations	Left	Right
55180-60104	48'	624'
55161	48'	-
63100-64136	-	136'

**NEW CAST IRON PIPE CULVERTS REQUIRED**

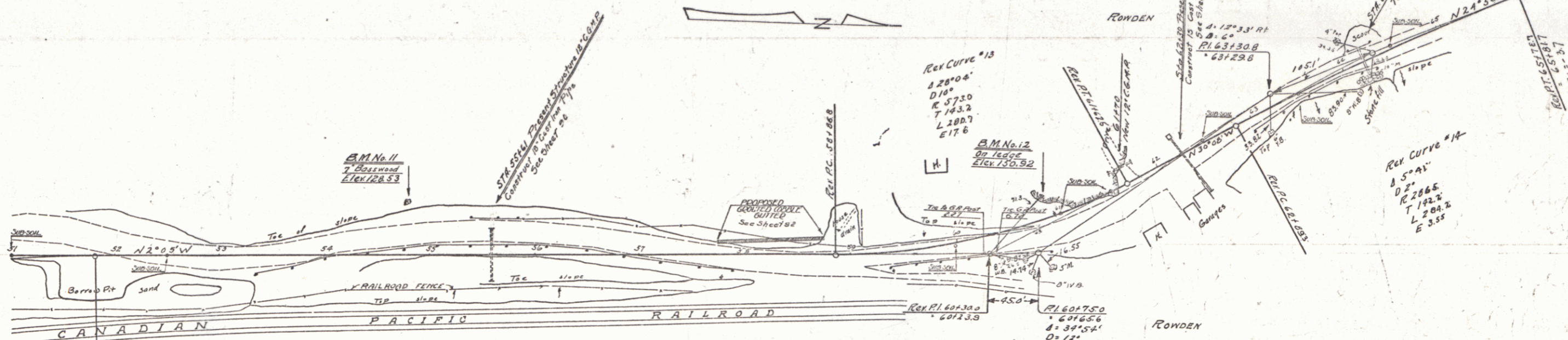
Sta	Diam	Length	Comp. B.	Tank C.	Steel	Feet/ft
55161	18"	52'	15	3-0	33	174
62130	15"	64'	15	1-9	174	1

**ACCURATE CORN LIGHTS REQUIRED**

Sta	Size	Height	Area	Vol
5725-5825	12"	40'	100H	440

**NEW C.G.M. DRIVEWAY PIPES REQUIRED**

Station	Diam	Length	Com. Mat.
61776-61784	12"	24'	2.3 cy.



**NOTE**  
Contractor will be required to move Railroad ROW fence back of proposed limits of cuts or fills previous to construction and replace same on Railroad ROW line following the completion of the grading. This work to be done as directed by the Engineer.  
Payment for moving and reseting of Railroad ROW fence to be on a cost plus basis as stated in Vt. Spec. Pamphlet 19, Sec. 9

Sta 41100 - 56400

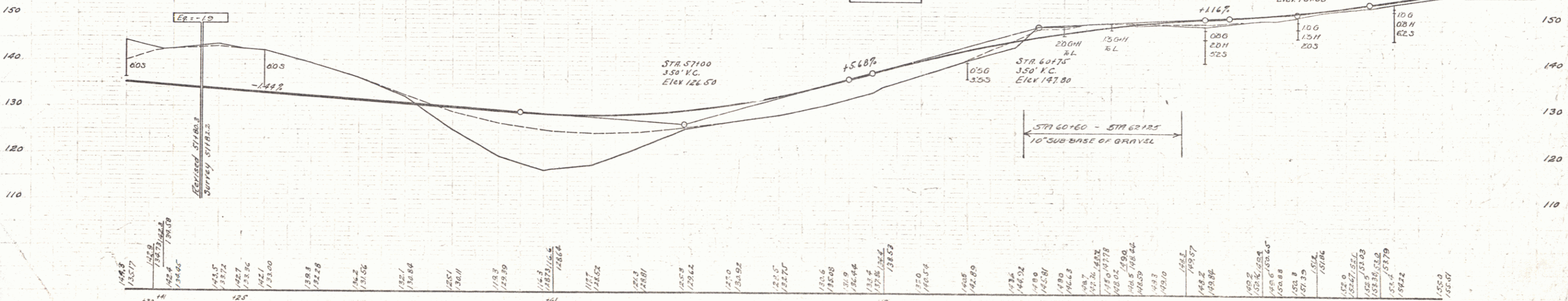
DIRECTION OF HAUL

**CURVE #13 REVISIONS 1930**

PC	50+06.3
PT	61+57.6
A	28°00'
R	373.7
T	143.2
L	281.3
E	17.7
JULY 31	

**CURVE #14 REVISIONS 1930**

PC	62+04.7
PT	65+28.8
A	5°52'
R	286.5
T	122.2
L	284.2
E	3.5
JULY 31	



B.M. No. 11. Spike in roof of T Basswood, 49' left of Sta. 54178 Elev 128.53.  
B.M. No. 12. Point on ledge, 25' left of Sta. 60191 Elev 150.92.