

INDEX OF SHEETS

SHEET NO.	TITLE PAGE
2	TYPICAL CROSS-SECTION OF IMPROVEMENT
3	PLAN AND PROFILE STA. 0+00 TO STA. 14+00
4	14+00 - 30+00
5	30+00 - 45+00
6	45+00 - 60+00
7	60+00 - 70+02.3
8-20	CROSS SECTIONS

FED. ROAD DIST. NO.	STATE	FED. AID PROJ. NO.	SHEET NO.	TOTAL SHEETS
9	Vt.	38	22	20

STATE OF VERMONT
STATE HIGHWAY DEPARTMENT

PLAN AND PROFILE OF PROPOSED
STATE HIGHWAY
FEDERAL AID PROJECT

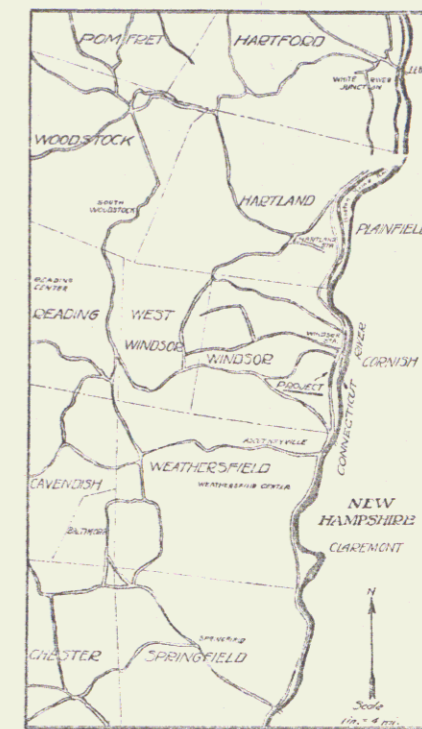
TOWN OF WINDSOR
CONNECTICUT RIVER ROAD
FROM SOUTH END OF PAVEMENT IN WINDSOR VILLAGE
AND EXTENDING SOUTHERLY 1.33 MILES

Route: US5
Project: F38

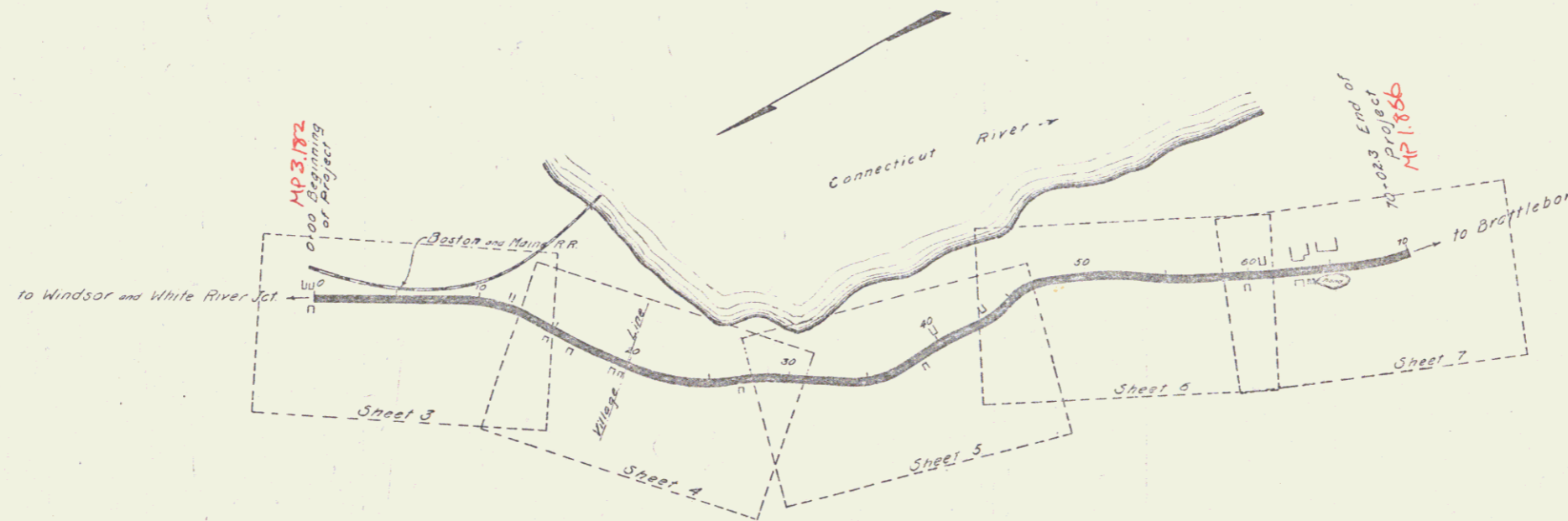
SCALES

PLAN (HOR.)	1 IN. = 50 FT.
PROFILE (VERT.)	1 IN. = 10 FT.
CROSS SECTIONS	1 IN. = 5 FT.

Pin# 992341



(To Be Returned To R.O.W. Division)
FORM OF US5
PERMANENT
DOWN FILE
RIGHT-OF-WAY DIVISION



CONVENTIONAL SIGNS

- COUNTY LINE
- TOWN LINE
- FENCE LINE
- STONE WALL
- UNFENCED PROPERTY
- GUARD RAIL
- TRAVELED WAY
- RAILROAD
- RETAINING WALL
- CENTER LINE
- SURVEY LINE
- CULVERT
- DROP INLET
- TROLLEY POLE
- POWER POLE
- TELEPHONE POLE
- TYPES
- HEDGE

- GROUND ELEVATION
- GRADE ELEVATION

- CURVE DATA
- DEFLECTION ANGLE Δ
 - DEGREE OF CURVE D.
 - RADIUS OF CURVE R.
 - TANGENT DISTANCE T.
 - LENGTH OF CURVE L.
 - EXTERNAL DISTANCE E.
 - POINT OF INTERSECTION P.I.
 - POINT OF CURVE P.C.
 - POINT OF TANGENT P.T.

LAYOUT

SCALE: 1 IN. = 500 FT.

Submitted by order of the State Highway Board
CHIEF ENGINEER
DEPARTMENT OF HIGHWAYS

RECOMMENDED
DISTRICT ENGINEER
BUREAU OF PUBLIC ROADS
RECOMMENDED FOR APPROVAL
CHIEF ENGINEER
DEPARTMENT OF HIGHWAYS
APPROVED
DIRECTOR - BUREAU OF PUBLIC ROADS

SERIES F No 58 FILED
SHEET 22 OF 20

11138

DIST # 4 PLANS

GUARD RAIL REQUIRED ON LEFT
 Sta 0+36 to Sta 7+68 Length 632 ft.
 7+90 - - 11+10 - 320 -
 12+20 - - 13+72 - 152 -
ON RIGHT
 Sta 6+88 to Sta 7+12 Length 24 ft.
 10+88 - - 11+12 - 24 -
TOTAL THIS SHEET 1152 ft.

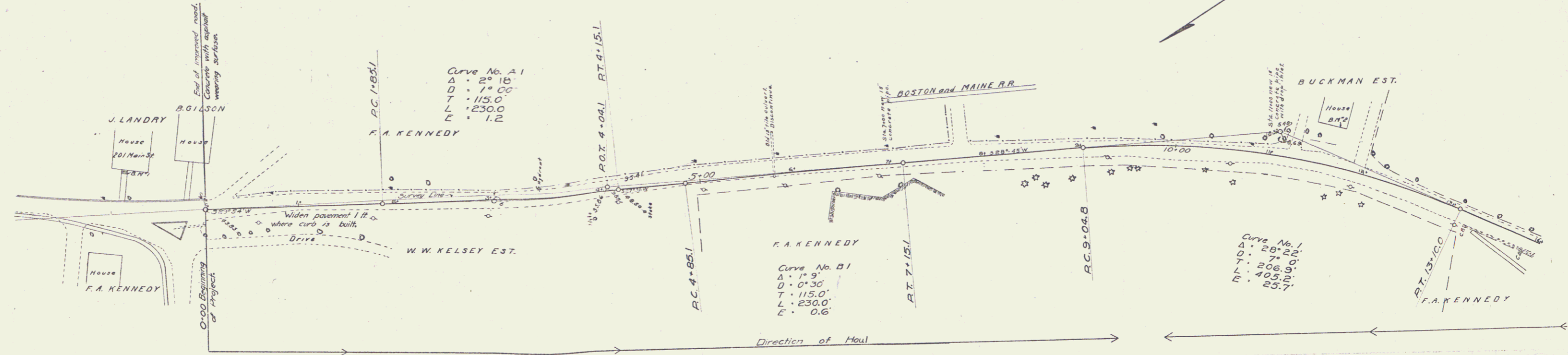
NEW CULVERTS REQUIRED
 Sta 7+00 18" Concrete Pipe 30 ft.
 1-2 1/2 Concrete 1.5 cu yds.
 Sta 11+00 18" Concrete Pipe with Drop Inlet 32 ft.
 1-2 1/2 Concrete 1.8 cu yds.

SUB BASE REQUIRED
 Sta 0+00 to 6+00 Length 600 ft.
CONCRETE CURB REQUIRED
 Sta 0+30 to 2+00 Length 150 ft.
 1-2-4 Concrete 38 cu yds.

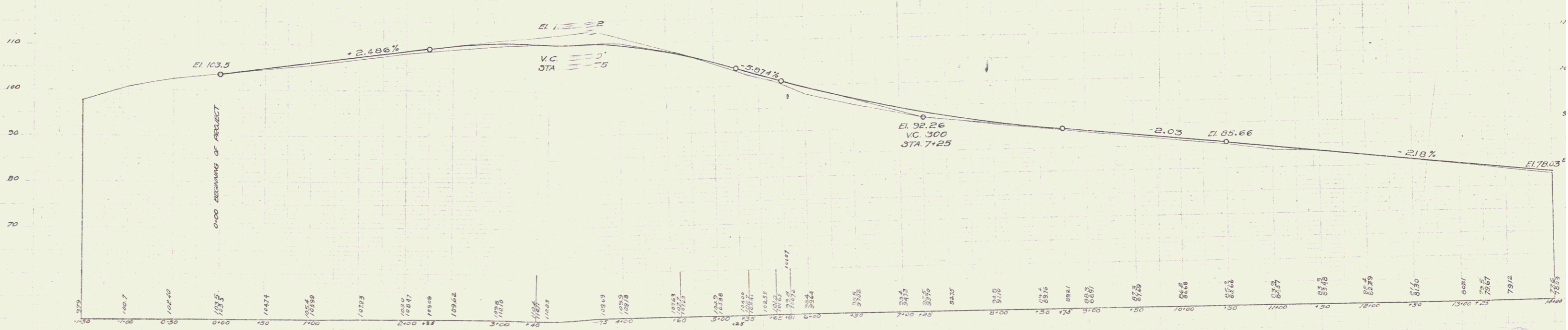
STANDARD UNDERDRAIN REQUIRED
 Sta 0+00 to 3+00 Length 300 ft.

JOB NO.	STATE	DATE	SCALE	SHEET NO.	TOTAL SHEETS
3	VT	30	20	3	20

DRAWN BY
 P.M. Stevens
 1/10/20
 3/1/20
 3/1/20



CHECKED BY
 P.M. Stevens
 1/10/20
 3/1/20
 3/1/20

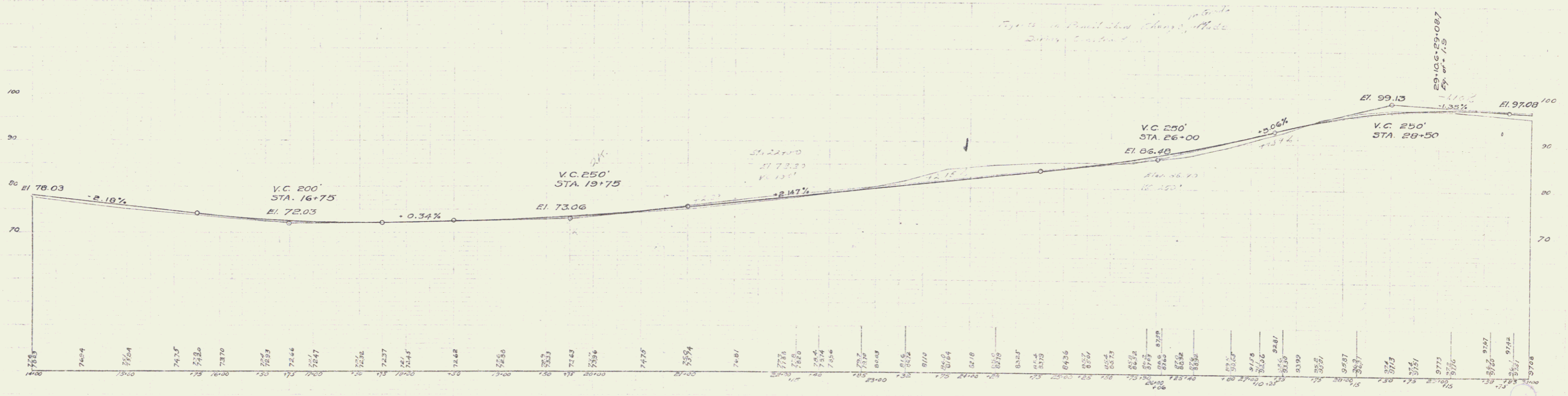
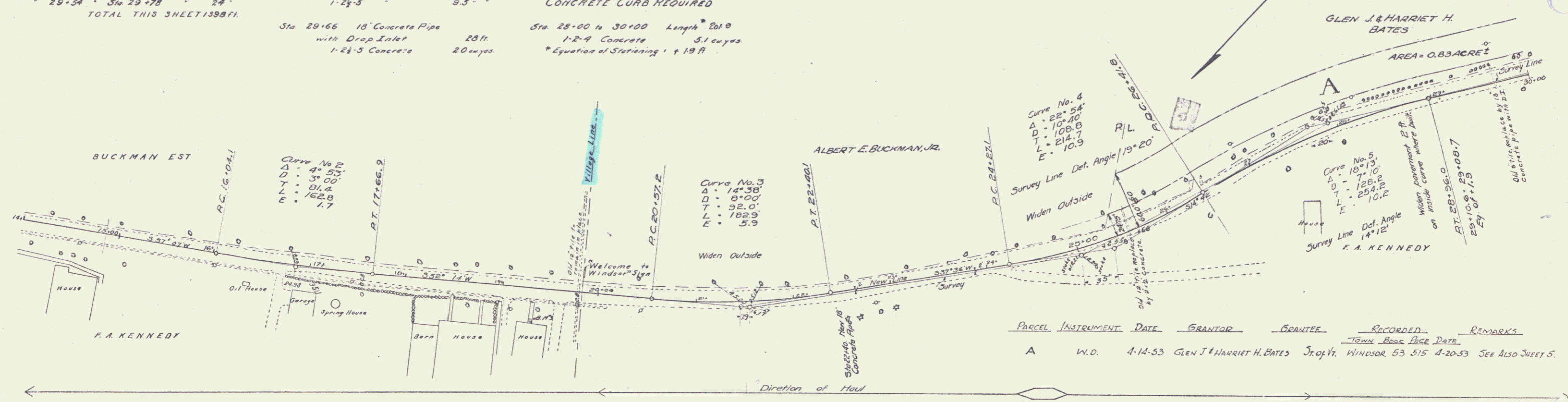


B.M. #1 S.W. Corner of bottom concrete step of house #201 Main St. Elev. 100.00
 B.M. #2 S.W. Corner of front wooden step of Buckman's house Elev. 85.87

Series F No. 38
 Sheet 1 of 20

GUARD RAIL REQUIRED ON LEFT	NEW CULVERTS REQUIRED	SUB BASE REQUIRED	STANDARD UNDERDRAIN REQUIRED
Sta 15+00 to Sta 23+56 Length 856 ft. - 25+30 - - 30+00 - 470 -	Sta 22+40 18" Concrete Pipe 30 ft. 1-2 1/2 Concrete 15 cu yds	Sta 22+40.1 to 25+50 Length 309.9 ft. - 26+80 - 30+00 - 321.9 -	Sta 28+00 to 30+00 Length 200 ft.
ON RIGHT Sta 22+28 to Sta 22+52 Length 24 ft. - 25+38 - - 25+62 - 24 - - 29+34 - Sta 29+78 - 24 - TOTAL THIS SHEET 1398 ft.	Sta 25+30 2'-2" Concrete Box 38 1/2 ft. 1-2-4 Concrete 76 cu yds 1-2 1/2-5 - 9.5 -	* Elevation of Stationing = +13 ft. CONCRETE CURB REQUIRED Sta 28+00 to 30+00 Length 200 ft. 1-2-4 Concrete 3.1 cu yds * Elevation of Stationing = +19 ft.	

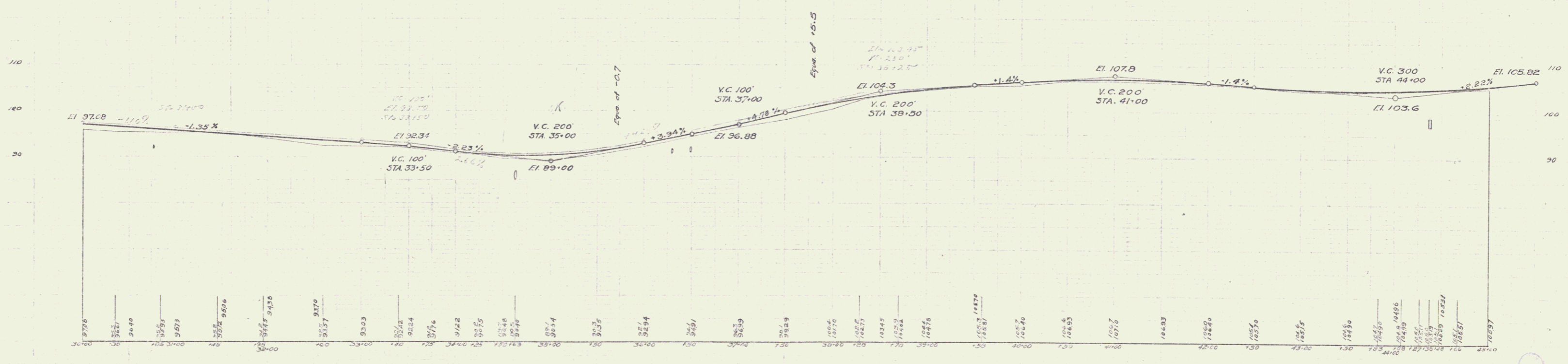
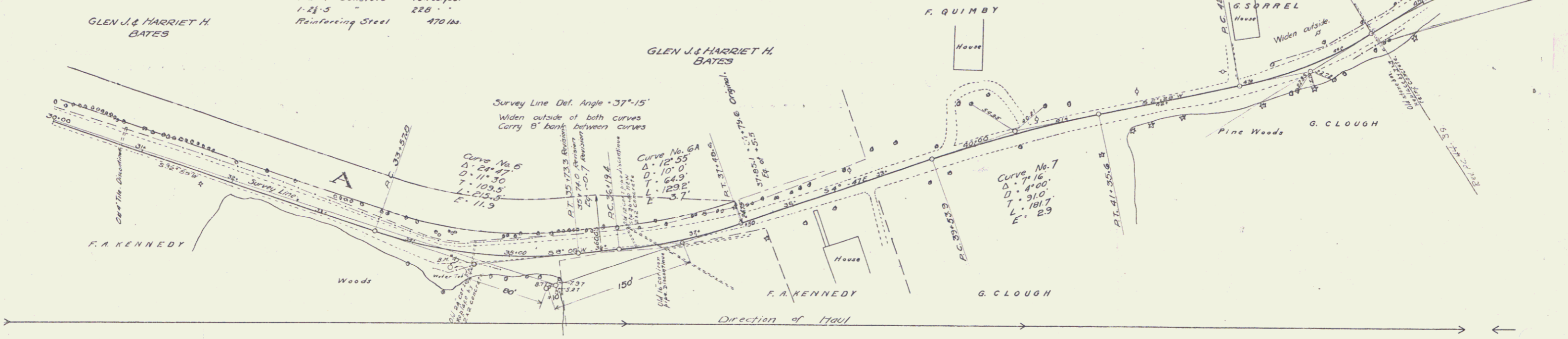
APP. ROAD DIST. NO.	STATE	FED. AID PROJ. NO.	FISCAL YEAR	SHEET NO.	TOTAL SHEETS
9	VT	38	24	4	20



Series No. 38
Sheet 4 of 20

GUARD RAIL REQUIRED	NEW CULVERTS REQUIRED	SUB BASE REQUIRED	STANDARD UNDERDRAIN REQUIRED
ON LEFT			
Sta 30+00 to Sta 35+70 Length 570ft.	Sta 34+63 2'x2' Concrete Box 40 ft.	Sta 30+00 to 32+00 Length 200 ft.	Sta 30+00 to 34+50 Length 450 ft.
- 36+12 - 36+36 - 24 -	1-2-4 Concrete 80 cu yds.	35+30 - 38+50 "304.0 ft.	
- 43+90 - 44+62 - 72 -	1-2-5 " 97 "		
ON RIGHT			
Sta 34+51 to Sta 39+75 Length 24 ft.	Sta 36+40 2'x2' Concrete Box 40 ft.		
- 36+38 - 36+62 - 24 -	1-2-4 Concrete 80 cu yds.		
- 44+10 - 44+38 - 48 -	1-2-5 " 97 "		
TOTAL THIS SHEET 762 ft.	Sta 44+38 3'x3' Reinforced Concrete Box 74 ft.	Sta 30+00 to 33+60 Length 360 ft.	
	1-2-4 Concrete 151 cu yds.	1-2-4 Concrete 90 cu yds.	
	1-2-5 " 228 "		
	Reinforcing Steel 470 lbs.		

JOB NO.	STATE	YEAR	SCALE	SHEET NO.	TOTAL SHEETS
3	VT	38	2 B	5	20



B.M. #4 Top of east edge of water tub on right of Sta 34+11. Elev 93.31

GUARD RAIL REQUIRED ON LEFT
 Sta 65+28 to Sta 67+80 Length 192 ft.
 " 68+80 " " 69+89 " 109 "
ON RIGHT
 Sta 66+35 to Sta 66+79 Length 44 ft.
 " 69+58 " " 69+82 " 24 "

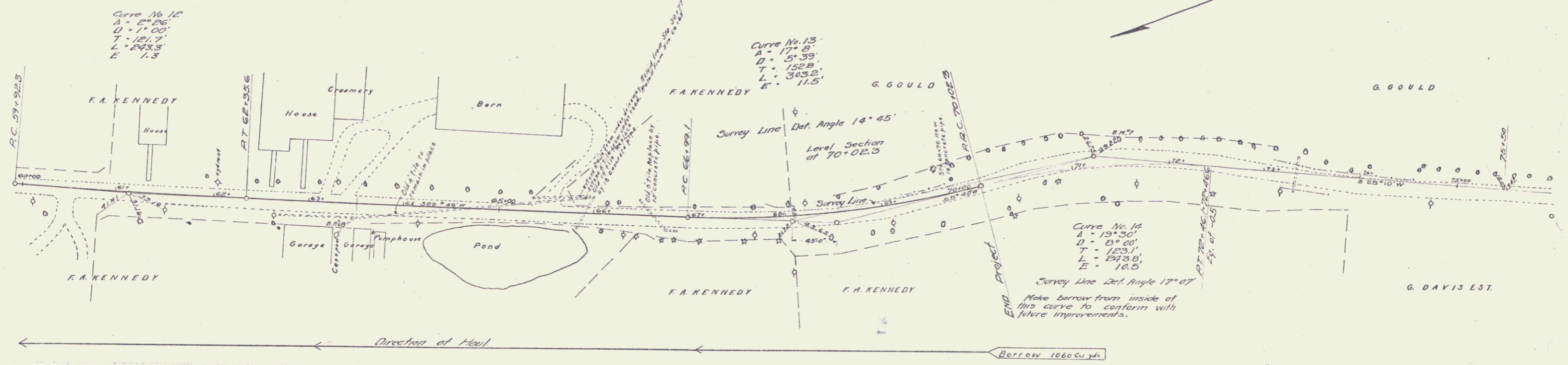
NEW CULVERTS REQUIRED
 Sta. 65+90 18" Concrete Pipe 44 ft.
 " 1-2 1/2 Concrete 1.5 cu yds.
 Sta. 66+65 15" Concrete Pipe 32 ft.
 " 1-2 1/2 Concrete 1.0 cu yds.
 Sta. 69+70 18" Concrete Pipe 30 ft.
 " 1-2 1/2 Concrete 1.5 cu yds.

SUB BASE REQUIRED
 Sta. 67+70 to 69+28 Length 158 ft.

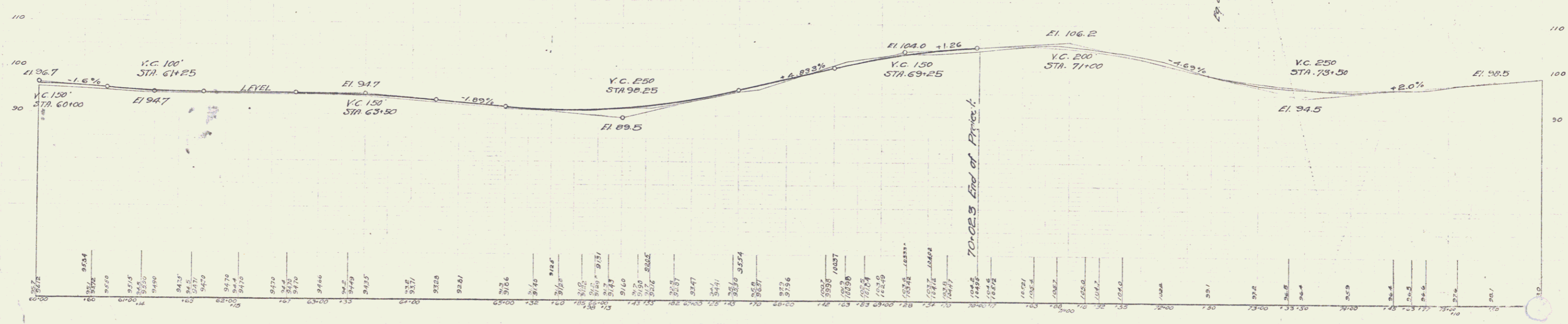
TOTAL THIS SHEET 344 ft.

NO.	DATE	BY	CHKD.	APP'D.
1	17	38	EE	7

Examined by
 P.M. Stevens
 11/14/28
 11/14/28
 11/14/28



Examined by
 P.M. Stevens
 11/14/28
 11/14/28
 11/14/28



B.M. *6 Natch in root of 48" elm on right of Sta 63+38 Elev. 93.82
 B.M. *7 Spike in side of 12" oak on left of Sta 71+49 Elev. 103.92

Sheet No. 38
 Sheet 7 of 20

6