

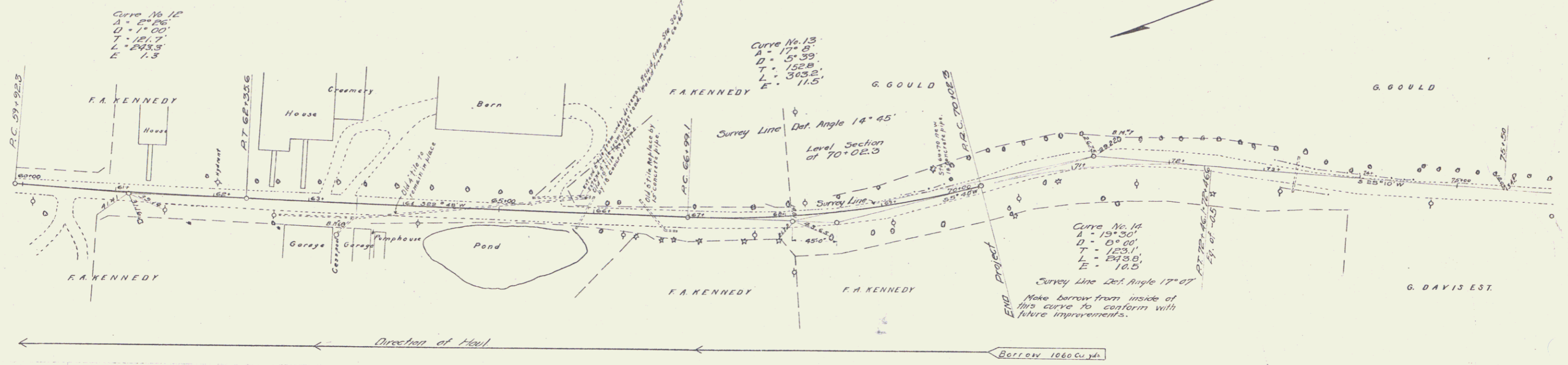
GUARD RAIL REQUIRED  
 ON LEFT  
 Sta 65+28 to Sta 67+80 Length 192 ft.  
 " 68+80 " " 69+80 " 104 "  
 ON RIGHT  
 Sta 66+35 to Sta 66+79 Length 44 ft.  
 " 69+58 " " 69+82 " 24 "  
 TOTAL THIS SHEET 344 ft.

NEW CULVERTS REQUIRED  
 Sta. 65+90 18" Concrete Pipe 44 ft.  
 1-2 1/2 Concrete 1.5 cu yds.  
 Sta. 66+65 15" Concrete Pipe 32 ft.  
 1-2 1/2 Concrete 1.0 cu yds.  
 Sta. 69+70 18" Concrete Pipe 30 ft.  
 1-2 1/2 Concrete 1.5 cu yds.

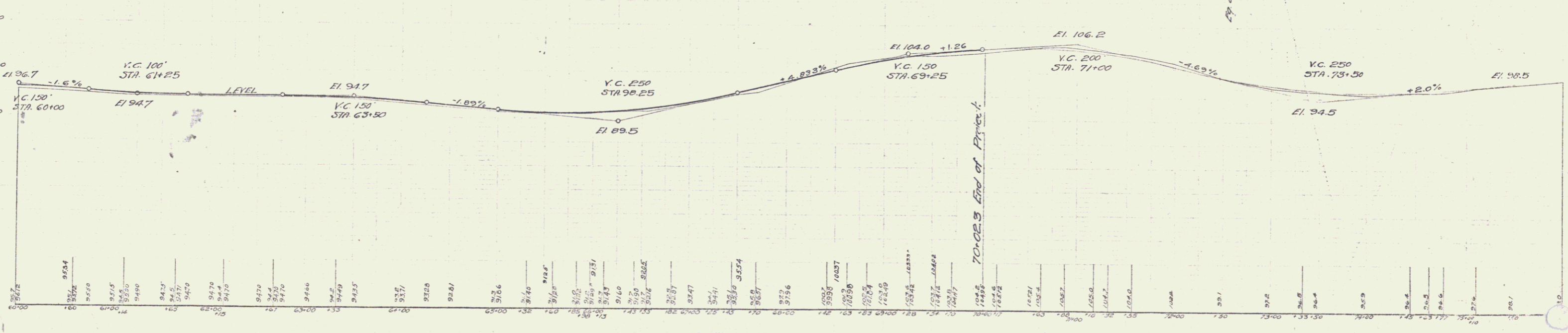
SUB BASE REQUIRED  
 Sta. 67+70 to 69+28 Length 158 ft.

NO.	DATE	BY	CHKD.	APP'D.	SCALE
1	17	38	EE	7	20

Examined by  
 P.M. Stevens  
 11/14/28  
 11/14/28  
 11/14/28



Examined by  
 P.M. Stevens  
 11/14/28  
 11/14/28  
 11/14/28



B.M. \*6 Natch in root of 48" elm on right of Sta 63+35 Elev. 93.82  
 B.M. \*7 Spike in side of 12" oak on left of Sta 71+49 Elev. 103.92

Sheet No. 38  
 Sheet 7 of 20

6