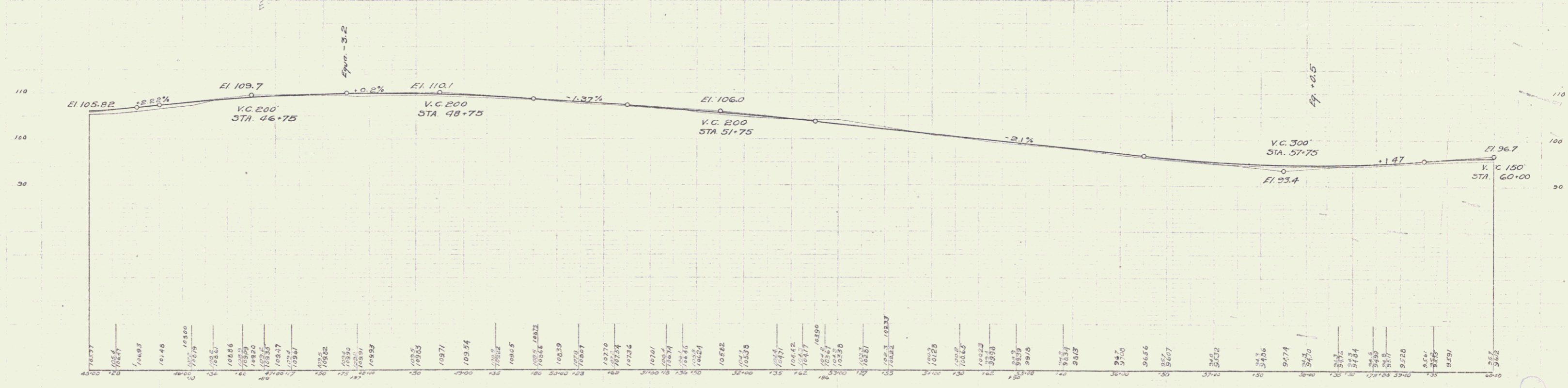
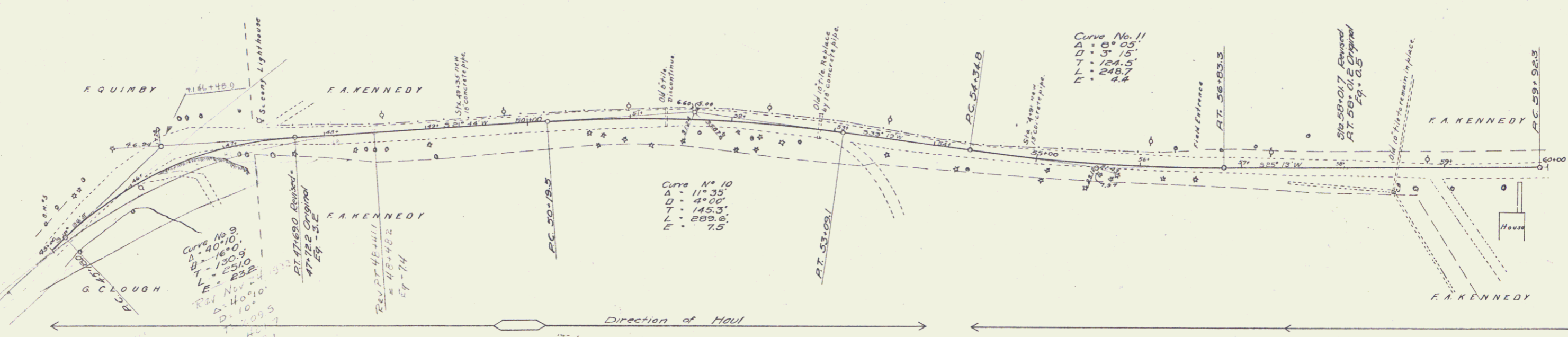


GUARD RAIL REQUIRED ON LEFT
 Sta 47+34 to Sta 56+39 Length 880 ft
 - 58+10 - - 59+19 - 109 -
ON RIGHT
 Sta 49+23 to Sta 49+47 Length 24 ft
 - 52+74 - - 52+38 - 24 -
 - 54+78 - - 55+02 - 24 -
 - 58+10 - - 58+82 - 72 -
TOTAL THIS SHEET 128 ft.

NEW CULVERTS REQUIRED
 Sta 49+35 18" Concrete Pipe 30 ft
 1-2 1/2" Concrete 13 cu yds.
 Sta 52+06 18" Concrete Pipe 40 ft
 1-2 1/2" Concrete 13 cu yds.
 Sta 59+90 15" Concrete Pipe 40 ft
 1-2 1/2" Concrete 10 cu yds.

FED. ROAD DIST. NO.	STATE	FISCAL YEAR	SHEET NO.	TOTAL SHEETS
3	11	26	6	20

Examined by
 P.M. Stevens
 H.H. Herbert
 J.H. Wilson
 J.M. Shreve



B.M. 55 Match in root of 24' elm on left of Sta 45+14 Elev. 105.12

Sheet No. 35
 Sheet 6 of 20

5