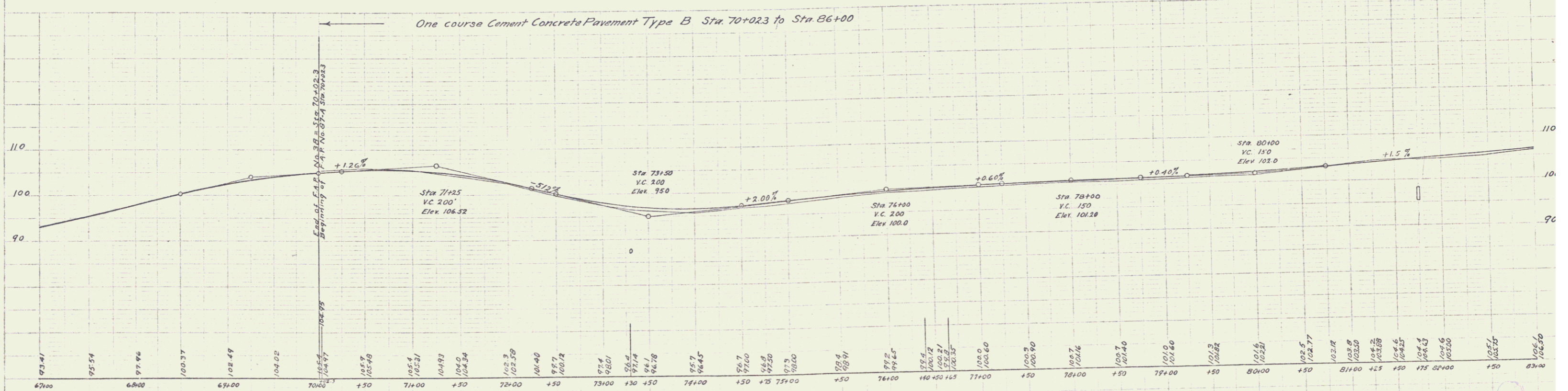
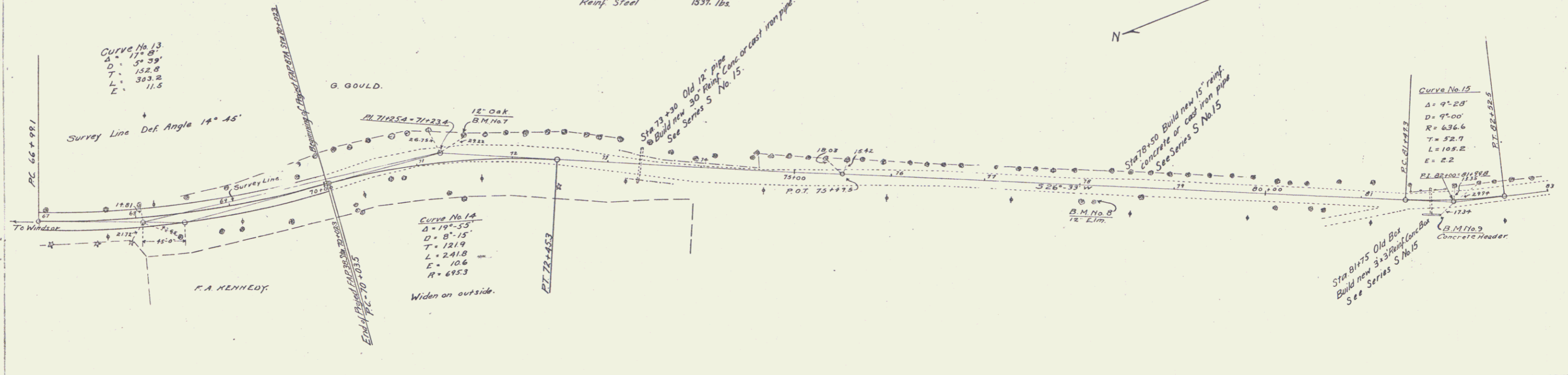


WOOD GUARD RAIL REQUIRED
 RIGHT
 Sta 73+18 to 73+42 = 24 feet.
 .. 78+38 .. 78+42 = 4 ..
 .. 81+63 .. 81+87 = 24 ..
 Total this sheet 72 feet.

CABLE GUARD RAIL REQUIRED
 LEFT
 Sta 73+00 to 78+60 = 56.6 feet.
 .. 79+50 .. 82+46 = 29.6 ..
 Total this sheet 86.4 feet.

NEW CULVERTS REQUIRED
 Sta 73+30 30" Reinf. Conc. or Cast Iron Pipe Culvert, 62 ft.
 Class A Conc. (1-2-4) 3.3 Cu Yd
 Reinf. Steel 66 lbs.
 Sta 78+50 15" Reinf. Conc. Pipe or Cast Iron Pipe Culvert 32 ft.
 Class B Conc. (1-2-3-5) 2.1 Cu Yd
 Reinf. Steel 33 lbs.
 Sta 81+75 3x3 Reinf. Conc. Box Culvert 23.4 Cu Yd
 Class A Conc. (1-2-4) 23.4 Cu Yd
 Reinf. Steel 1537 lbs.

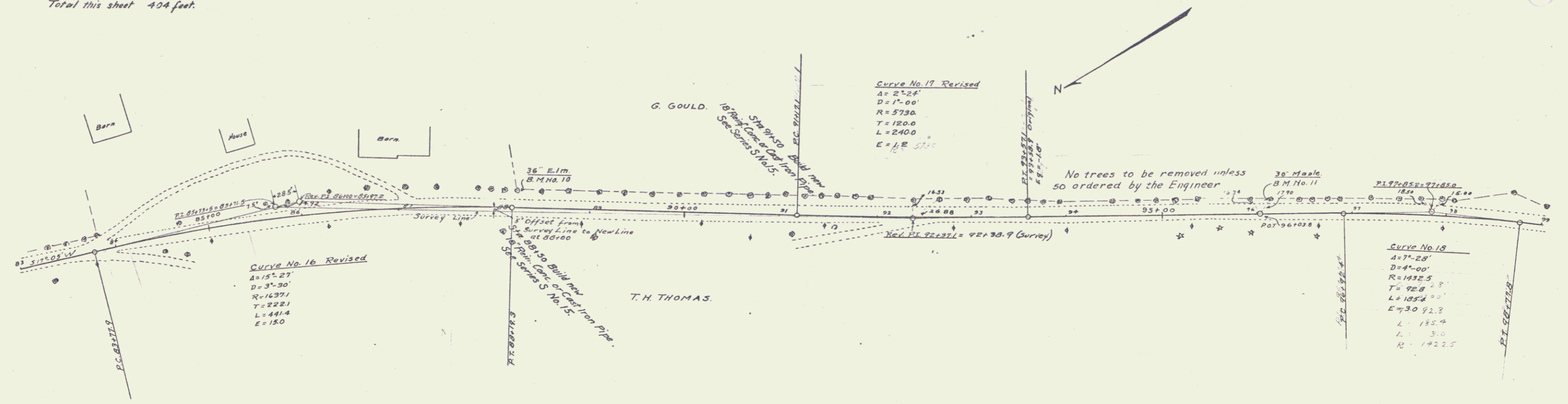


B.M. No. 7 Spike in 12" Oak Left of Sta. 71+55 Elev. 103.72
 B.M. No. 8 Spike in 12" Elm Right of Sta. 78+17 Elev. 101.92
 B.M. No. 9 S.W. Cor. of Concrete Header on Right of Culvert Sta. 82+38 Elev. 106.87

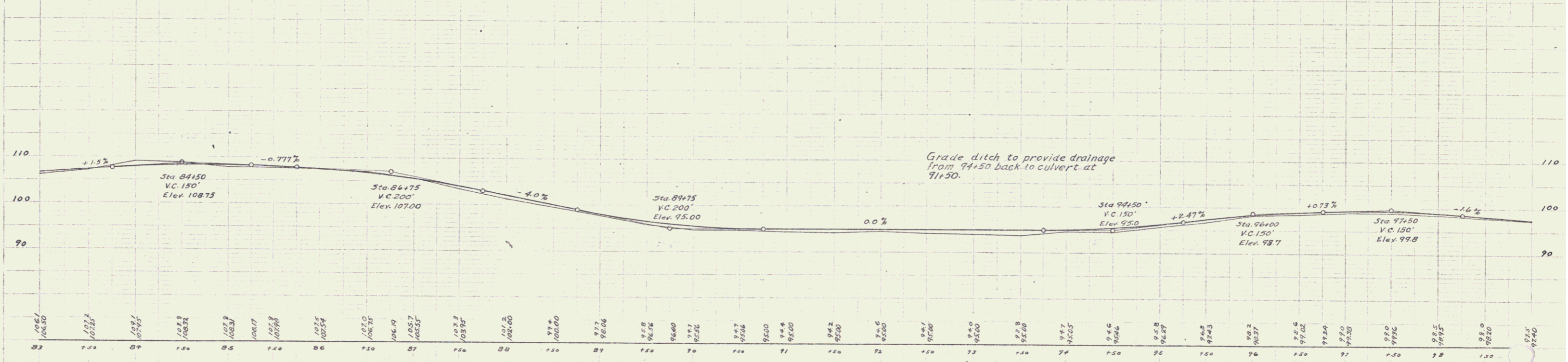
Series F No. 97A. Final
 Sheet 2 of 13

WOOD GUARD RAIL REQUIRED
 LEFT
 Sta 84+66 to 85+54 = 108 feet
 " 87+88 " 88+12 = 24 "
 " 91+38 " 91+62 = 24 "
 " 96+50 " 98+50 = 200 "
 RIGHT
 Sta 87+88 to 88+12 = 24 feet
 " 91+38 " 91+62 = 24 "
 Total this sheet 424 feet.

NEW CULVERTS REQUIRED
 Sta 88+30 18" Reinf. conc. or cast iron pipe Culvert, 32 feet.
 Class B Conc. (1-2 1/2) 2.7 Cu. Yd.
 Reinf. Steel 33 lbs.
 Sta 91+50 18" Reinf. Conc. or cast iron pipe Culvert, 32 feet.
 Class B Conc. (1-2 1/2) 2.7 Cu. Yd.
 Reinf. Steel 33 lbs.



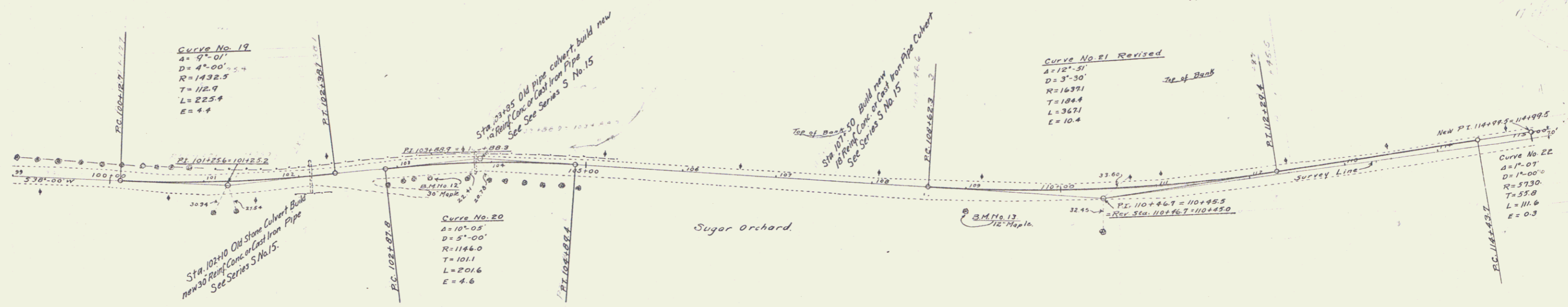
One course Cement Concrete Pavement Type A Sta. 86+00 to Sta. 104+00



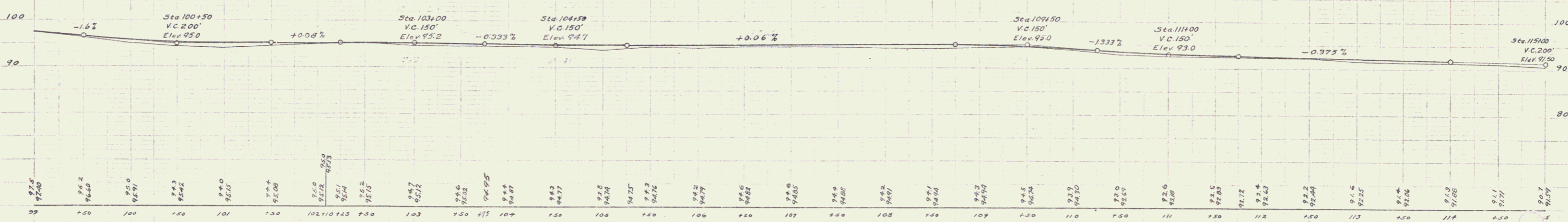
B.M. No. 10 Spike in 36" Elm Left of Sta. 87+23 Elev. 99.17
 B.M. No. 11 Spike in 30" Maple Left of Sta. 96+14 Elev. 97.96

WOOD GUARD RAIL REQUIRED
 LEFT
 Sta 101+98 to 102+22 = 24 feet
 " 103+50 " 105+50 = 200 " "
 " 107+38 " 107+62 = 24 " "
 RIGHT
 Sta 101+98 to 102+22 = 24 feet
 Sta 103+73 " 103+97 = 24 " "
 Sta 107+38 " 107+62 = 24 " "
 Total this sheet = 320 feet

NEW CULVERTS REQUIRED
 Sta 102+10 30" Reinf. Conc. or Cast Iron Pipe Culvert, 40 feet
 Class A Conc. (1-2-4) 3.5 Cu Yds.
 Reinf. Steel 66 lbs.
 Sta 103+85 18" Reinf. Conc. Pipe or Cast Iron Pipe Culvert, 32 feet
 Class B Conc. (1-2-3) 2.7 Cu Yds.
 Reinf. Steel 33 lbs.
 Sta 107+50 18" Reinf. Conc. or Cast Iron Pipe Culvert, 32 feet
 Class B Conc. (1-2-3) 2.7 Cu Yds.
 Reinf. Steel 33 lbs.



One course Cement Concrete Pavement Type B, Sta. 104+00 to Sta. 107+00
 One course Cement Concrete Pavement Type A, Sta. 107+00 to Sta. 119+50



B.M. No. 12 Spike in 30" Maple right of Sta. 103+33 Elev. 95.87
 B.M. No. 13 Spike in 12" Maple right of Sta. 109+00 Elev. 96.31
 (Back Side)

