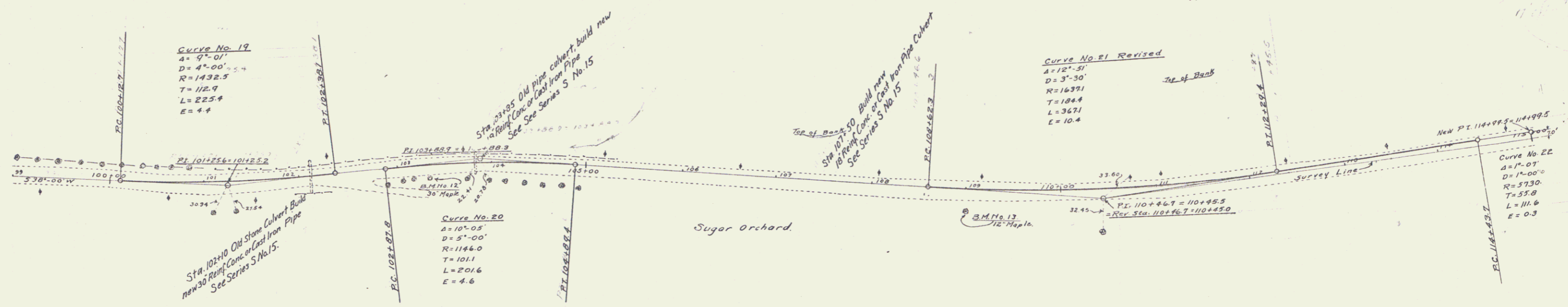
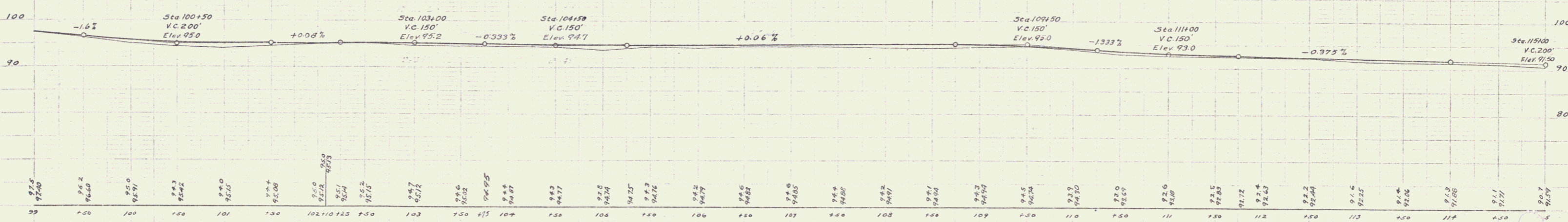


**WOOD GUARD RAIL REQUIRED**  
 LEFT  
 Sta 101+98 to 102+22 = 24 feet  
 " 103+50 " 105+50 = 200 " "  
 " 107+38 " 107+62 = 24 " "  
 RIGHT  
 Sta 101+98 to 102+22 = 24 feet  
 Sta 103+73 " 103+97 = 24 " "  
 Sta 107+38 " 107+62 = 24 " "  
 Total this sheet = 320 feet

**NEW CULVERTS REQUIRED**  
 Sta 102+10 30" Reinf. Conc. or Cast Iron Pipe Culvert, 40 feet  
 Class A Conc. (1-2-4) 3.5 Cu Yds.  
 Reinf. Steel 66 lbs.  
 Sta 103+85 18" Reinf. Conc. Pipe or Cast Iron Pipe Culvert, 32 feet  
 Class B Conc. (1-2-3) 2.7 Cu Yds.  
 Reinf. Steel 33 lbs.  
 Sta 107+50 18" Reinf. Conc. or Cast Iron Pipe Culvert, 32 feet  
 Class B Conc. (1-2-3) 2.7 Cu Yds.  
 Reinf. Steel 33 lbs.



One course Cement Concrete Pavement Type B, Sta. 104+00 to Sta. 107+00  
 One course Cement Concrete Pavement Type A, Sta. 107+00 to Sta. 119+50



B.M. No. 12 Spike in 30" Maple right of Sta. 103+33 Elev. 95.87  
 B.M. No. 13 Spike in 12" Maple right of Sta. 109+00 Elev. 96.31  
 (Back Side)