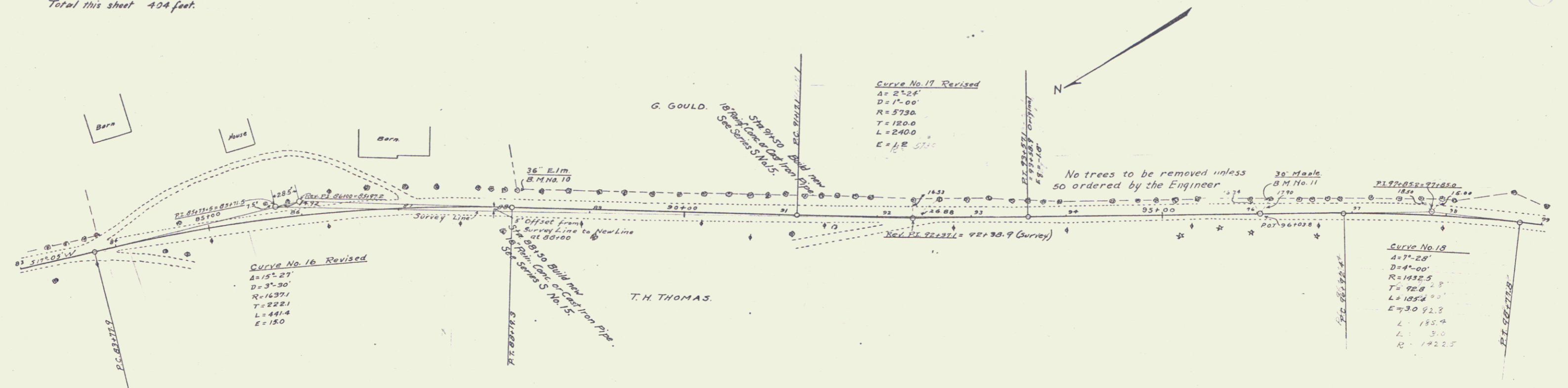


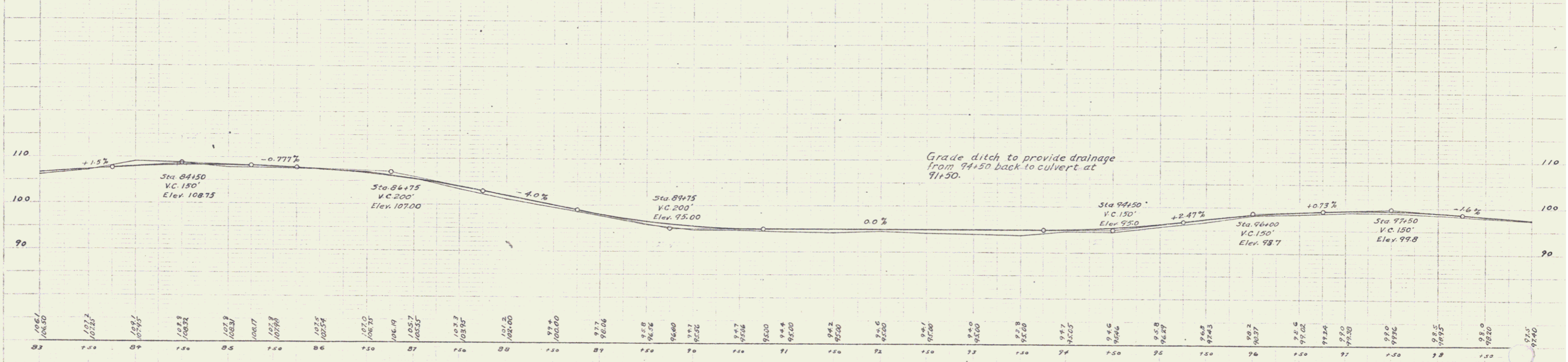
WOOD GUARD RAIL REQUIRED
 LEFT
 Sta 84+66 to 85+54 = 108 feet
 " 87+88 " 88+12 = 24 "
 " 91+38 " 91+62 = 24 "
 " 96+50 " 98+50 = 200 "
 RIGHT
 Sta 87+88 to 88+12 = 24 feet
 " 91+38 " 91+62 = 24 "
 Total this sheet 424 feet.

NEW CULVERTS REQUIRED
 Sta 88+30 18" Reinf. conc. or cast iron pipe Culvert, 32 feet.
 Class B Conc. (1-2 1/2%) 2.7 Cu. Yd.
 Reinf. Steel 33 lbs.
 Sta 91+50 18" Reinf. Conc. or cast iron pipe Culvert, 32 feet.
 Class B Conc. (1-2 1/2%) 2.7 Cu. Yd.
 Reinf. Steel 33 lbs.

STATE HIGHWAY DEPARTMENT
 DIVISION OF HIGHWAYS
 PROJECT NO. 87-1-222-1-13



One course Cement Concrete Pavement Type A Sta. 86+00 to Sta. 104+00



Grade ditch to provide drainage from 94+50 back to culvert at 91+50.

B.M. No. 10 Spike in 36" Elm Left of Sta. 87+23 Elev. 99.17
 B.M. No. 11 Spike in 30" Maple Left of Sta. 96+14 Elev. 97.96

Series F No. 07A. F.H.D.
 Sheet 5 of 13

3