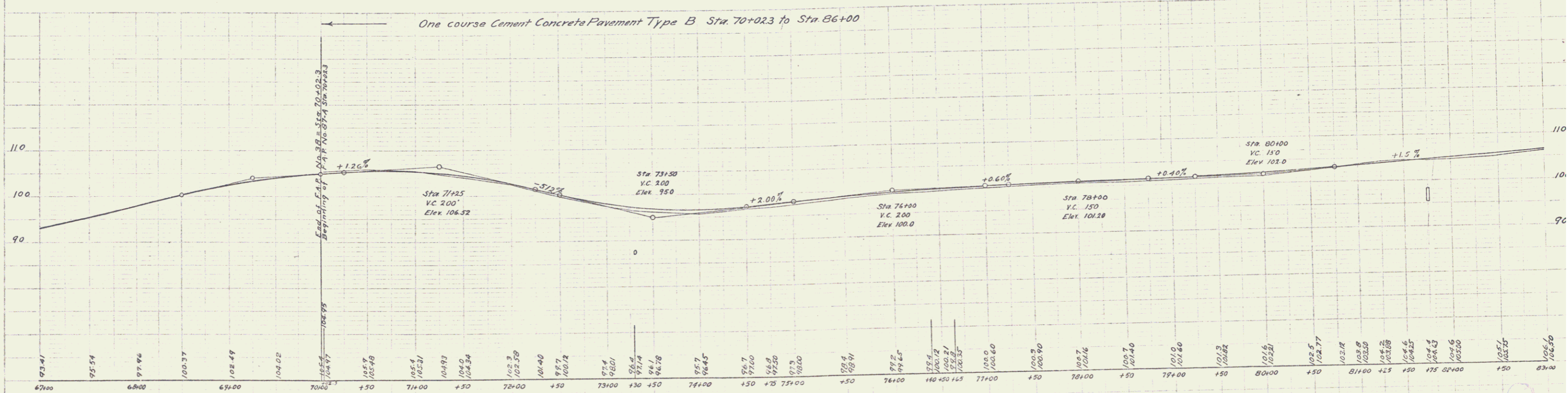
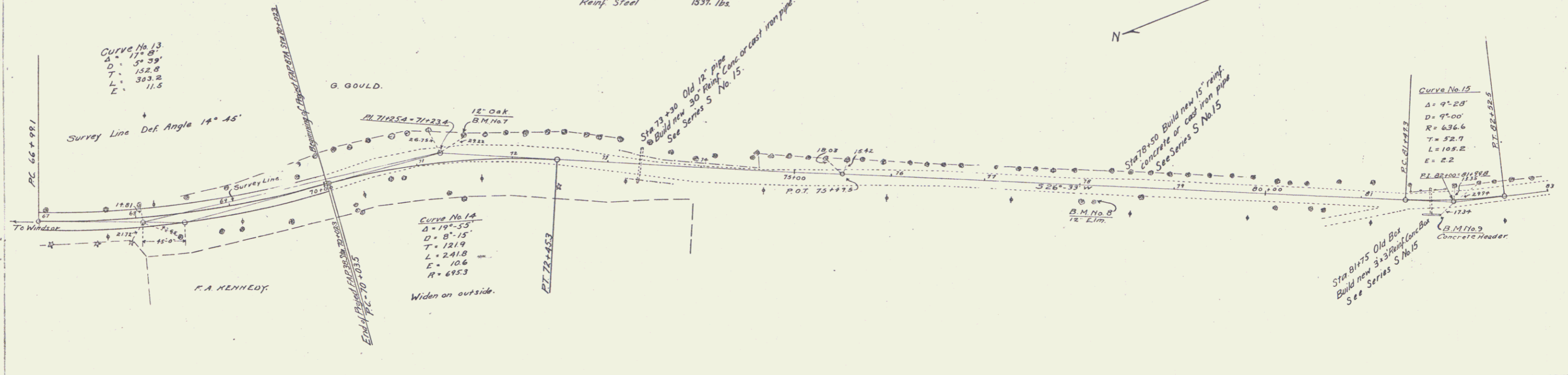


WOOD GUARD RAIL REQUIRED
 RIGHT
 Sta 73+18 to 73+42 = 24 feet.
 .. 78+38 .. 78+42 = 4 ..
 .. 81+63 .. 81+87 = 24 ..
 Total this sheet 72 feet.

CABLE GUARD RAIL REQUIRED
 Left
 Sta 73+00 to 78+60 = 56.6 feet.
 .. 79+50 .. 82+46 = 29.6 ..
 Total this sheet 86.4 feet.

NEW CULVERTS REQUIRED
 Sta 73+30 30" Reinf. Conc. or Cast Iron Pipe Culvert, 62 ft.
 Class A Conc. (1-2-4) 3.3 Cu Yd
 Reinf. Steel 66 lbs.
 Sta 78+50 15" Reinf. Conc. Pipe or Cast Iron Pipe Culvert 32 ft.
 Class B Conc. (1-2-3) 2.1 Cu Yd
 Reinf. Steel 33 lbs.
 Sta 81+75 3x3 Reinf. Conc. Box Culvert 23.4 Cu Yd.
 Class A Conc. (1-2-4) 23.4 Cu Yd.
 Reinf. Steel 1337 lbs.



B.M. No. 7 Spike in 12" Oak Left of Sta. 71+55 Elev. 103.72
 B.M. No. 8 Spike in 12" Elm Right of Sta. 78+17 Elev. 101.92
 B.M. No. 9 S.W. Cor. of Concrete Header on Right of Culvert Sta. 82+38 Elev. 106.87

Series F No. 97A. Final
 Sheet 2 of 13