

INDEX OF SHEETS

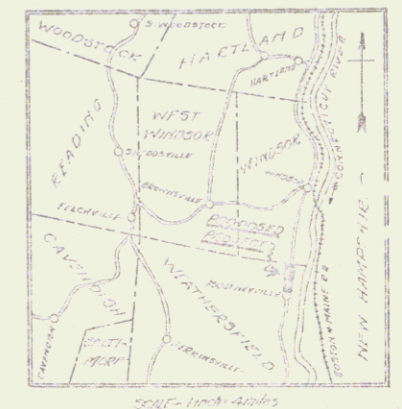
SHEET NO.	TITLE PAGE
4	TYPICAL CROSS-SECTION OF IMPROVEMENT WITH RAMP
5	PLAN AND PROFILE STA. 64+00 - STA. 70+00
6	STA. 70+00 - STA. 81+00
7	STA. 81+00 - STA. 91+00
8	STA. 91+00 - STA. 103+00
9	STA. 103+00 - STA. 119+00
10	STA. 119+00 - STA. 131+00

11-32 Cross Sections

DATE	BY	REVISION	NO.	DESCRIPTION
0	Ve	0.00	1	

STATE OF VERMONT
STATE HIGHWAY DEPARTMENT

PLAN AND PROFILE OF PROPOSED
STATE HIGHWAY
FEDERAL AID PROJECT



(To Be Returned to H.O.W. DIVISION)
TOWN OF
US5
PERPETUAL
COMMON FINE
EIGHT-OF-WAY DIVISION

TOWN OF WEATHERSFIELD
CONNECTICUT RIVER ROAD
BEGINNING AT WINDSOR-WEATHERSFIELD
TOWN LINE AND EXTENDING SOUTHERLY
MILES TO ASCUTNEYVILLE

Route: US5
Project: F64B
Pin# 99R338



SCALES
PLAN 1" = 100' - 1" = 100 FEET
PROFILE 1" = 10' - 1" = 10 FEET
VERT. CURVES 1" = 10' - 1" = 10 FEET
CROSS SECTIONS 1" = 10' - 1" = 10 FEET

CONVENTIONAL SIGNS

Symbol	Description
---	COUNTY LINE
---	TOWN LINE
---	FENCE LINE
---	STONE WALL
---	UNFENCED PROPERTY
---	QUARRY
---	TRAVELLED WAY
---	RAILROAD
---	RETAINING WALL
---	CENTER LINE
---	SURVEY LINE
---	CULVERT
---	TRUCK INLET
---	TRUCKY POLE
---	POWER POLE
---	TELEPHONE POLE
---	TRUCK
---	TRUCK

RECORD PLANS

THESE PLANS SUBJECT TO SUCH REVISIONS AS MAY BE REQUIRED BY THE BUREAU OF PUBLIC ROADS OR THE CHIEF ENGINEER.

APPROVED: April 14, 1927
[Signature]
Submitted by order of the State Highway Board
April 14, 1927
[Signature]
COMMISSIONER H. O. HARRIS

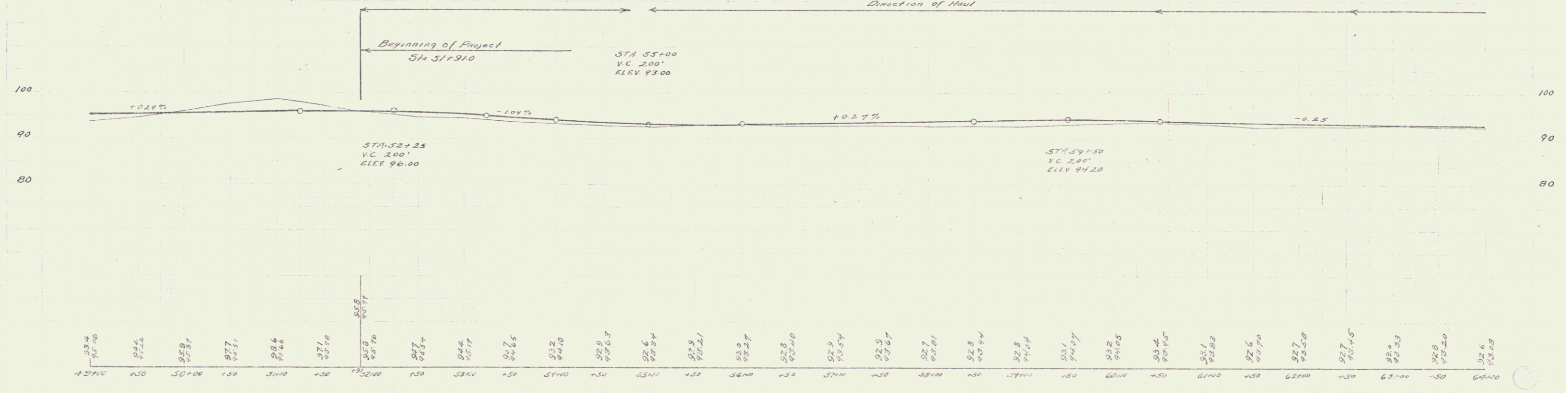
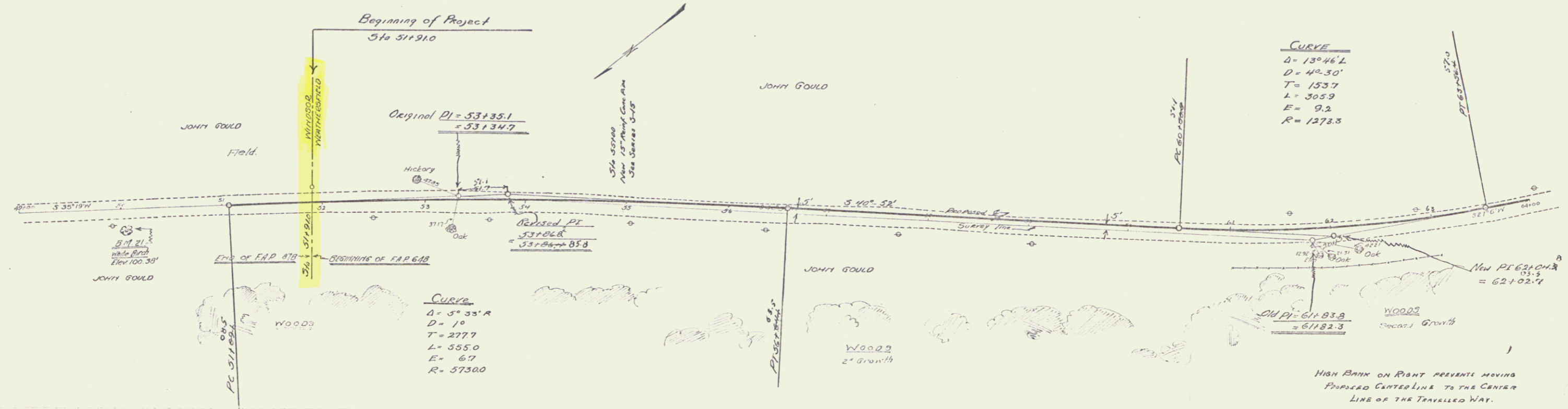
RECOMMENDED BY:
DISTRICT ENGINEER
BUREAU OF PUBLIC ROADS
COMMISSIONER H. O. HARRIS

DIST. # 4 PLANS 1

Wood Guard Rail Required
 Right
 Sta 55138 to 55143 length 24 ft
 Left
 Sta 55138 to 55142 length 24 ft

New Culverts Required
 Sta 55138 15" Rein Conc Pipe length 30 ft
 Conc Class (B-25) 1184 lb
 Rein Steel 135 lb
 Conc. Grout 3-1 cu.

Proj No	Dist No	Sheet No	Total Sheets
9	VI	64B	32



49+00	93.4	50+00	94.2	51+00	95.9	52+00	97.7	53+00	98.6	54+00	97.8	55+00	95.8	56+00	92.7	57+00	92.6	58+00	92.9	59+00	92.7	60+00	92.8	61+00	92.6	62+00	92.7	63+00	92.6	64+00	92.6
-------	------	-------	------	-------	------	-------	------	-------	------	-------	------	-------	------	-------	------	-------	------	-------	------	-------	------	-------	------	-------	------	-------	------	-------	------	-------	------

B.M. #21 - 18" White Birch at Sta 50+00 Elev 100.38 ft

SERIES F No 64B
 SHEET 14 OF 32

Wood Guard Rail Required

Sta 65180 to 66180	length	24 ft
Sta 66180 to 67180	length	24 ft
Sta 67180 to 68180	length	24 ft
Sta 68180 to 69180	length	24 ft
Sta 69180 to 70180	length	24 ft
Sta 70180 to 71180	length	24 ft
Sta 71180 to 72180	length	24 ft
Sta 72180 to 73180	length	24 ft
Sta 73180 to 74180	length	24 ft
Sta 74180 to 75180	length	24 ft
Sta 75180 to 76180	length	24 ft
Sta 76180 to 77180	length	24 ft
Sta 77180 to 78180	length	24 ft
Sta 78180 to 79180	length	24 ft
Sta 79180 to 80180	length	24 ft
Sta 80180 to 81180	length	24 ft
Sta 81180 to 82180	length	24 ft
Sta 82180 to 83180	length	24 ft
Sta 83180 to 84180	length	24 ft
Sta 84180 to 85180	length	24 ft
Sta 85180 to 86180	length	24 ft
Sta 86180 to 87180	length	24 ft
Sta 87180 to 88180	length	24 ft
Sta 88180 to 89180	length	24 ft
Sta 89180 to 90180	length	24 ft
Sta 90180 to 91180	length	24 ft
Sta 91180 to 92180	length	24 ft
Sta 92180 to 93180	length	24 ft
Sta 93180 to 94180	length	24 ft
Sta 94180 to 95180	length	24 ft
Sta 95180 to 96180	length	24 ft
Sta 96180 to 97180	length	24 ft
Sta 97180 to 98180	length	24 ft
Sta 98180 to 99180	length	24 ft
Sta 99180 to 100180	length	24 ft

Cable Guard Rail Required

Sta 73130 to 73700	length	344 ft
Sta 73700 to 74270	length	320 ft
Sta 74270 to 74840	length	273 ft

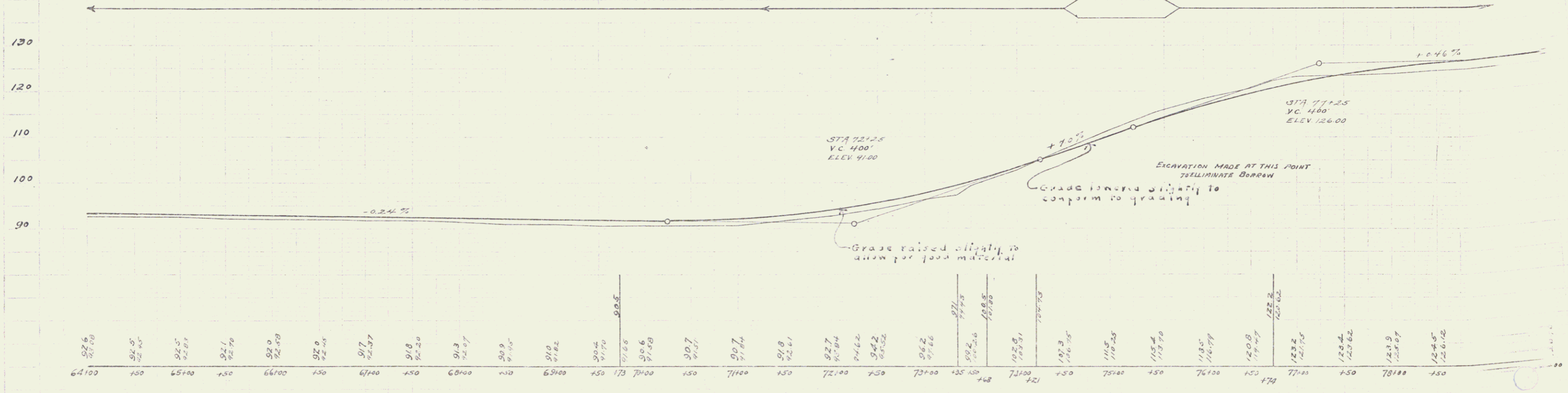
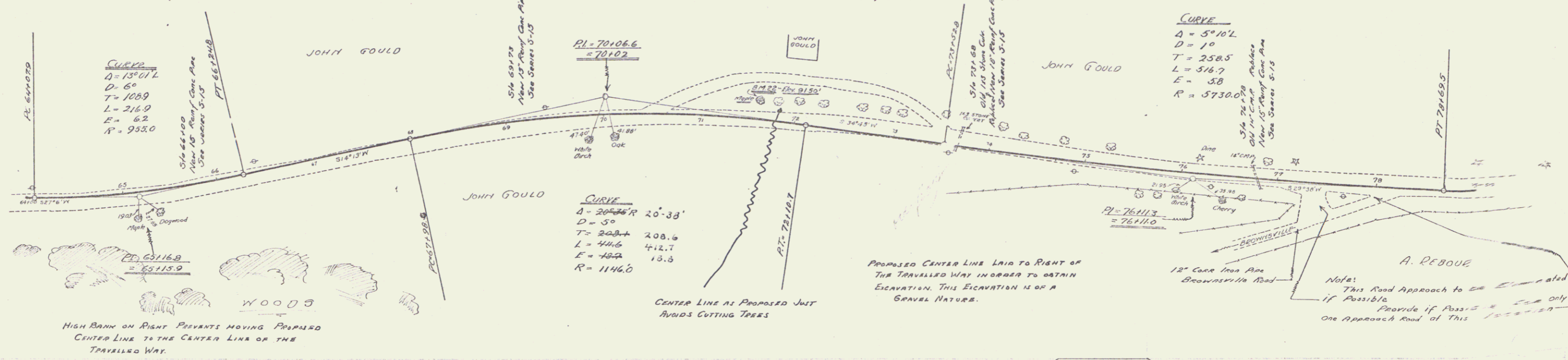
New Culverts Required

Sta 66100-315	15" Reinf. Conc Pipe length 38 ft	1424 lb
Sta 66100-315	Conc Class B(1-25-3)	13320 lbs
Sta 69170	15" Reinf. Conc Pipe length 32 ft	1216 lb
Sta 69170	Conc Class B(1-25-3)	11248 lbs
Sta 73168	18" Reinf. Conc Pipe length 36 ft	1368 lb
Sta 73168	Conc Class B(1-25-3)	12702 lbs
Sta 76170	15" Reinf. Conc Pipe length 32 ft	1216 lb
Sta 76170	Conc Class B(1-25-3)	11248 lbs

New Drivng Way Culvert Required

Sta 77170	12" Conc Iron Pipe length 16 ft	1560 lb
Sta 77170	Conc Class B(1-25-3)	14400 lbs
Sta 77170	Reinf. Steel	33 lbs

File No.	Sheet No.	Year	Scale	Sheet No.	Total Sheets
9	48	1927		5	32



64100	64150	64200	64250	64300	64350	64400	64450	64500	64550	64600	64650	64700	64750	64800	64850	64900	64950	65000	65050	65100	65150	65200	65250	65300	65350	65400	65450	65500	65550	65600	65650	65700	65750	65800	65850	65900	65950	66000	66050	66100	66150	66200	66250	66300	66350	66400	66450	66500	66550	66600	66650	66700	66750	66800	66850	66900	66950	67000	67050	67100	67150	67200	67250	67300	67350	67400	67450	67500	67550	67600	67650	67700	67750	67800	67850	67900	67950	68000	68050	68100	68150	68200	68250	68300	68350	68400	68450	68500	68550	68600	68650	68700	68750	68800	68850	68900	68950	69000	69050	69100	69150	69200	69250	69300	69350	69400	69450	69500	69550	69600	69650	69700	69750	69800	69850	69900	69950	70000	70050	70100	70150	70200	70250	70300	70350	70400	70450	70500	70550	70600	70650	70700	70750	70800	70850	70900	70950	71000	71050	71100	71150	71200	71250	71300	71350	71400	71450	71500	71550	71600	71650	71700	71750	71800	71850	71900	71950	72000	72050	72100	72150	72200	72250	72300	72350	72400	72450	72500	72550	72600	72650	72700	72750	72800	72850	72900	72950	73000	73050	73100	73150	73200	73250	73300	73350	73400	73450	73500	73550	73600	73650	73700	73750	73800	73850	73900	73950	74000	74050	74100	74150	74200	74250	74300	74350	74400	74450	74500	74550	74600	74650	74700	74750	74800	74850	74900	74950	75000	75050	75100	75150	75200	75250	75300	75350	75400	75450	75500	75550	75600	75650	75700	75750	75800	75850	75900	75950	76000	76050	76100	76150	76200	76250	76300	76350	76400	76450	76500	76550	76600	76650	76700	76750	76800	76850	76900	76950	77000	77050	77100	77150	77200	77250	77300	77350	77400	77450	77500	77550	77600	77650	77700	77750	77800	77850	77900	77950	78000	78050	78100	78150	78200	78250	78300	78350	78400	78450	78500	78550	78600	78650	78700	78750	78800	78850	78900	78950	79000	79050	79100	79150	79200	79250	79300	79350	79400	79450	79500	79550	79600	79650	79700	79750	79800	79850	79900	79950	80000	80050	80100	80150	80200	80250	80300	80350	80400	80450	80500	80550	80600	80650	80700	80750	80800	80850	80900	80950	81000	81050	81100	81150	81200	81250	81300	81350	81400	81450	81500	81550	81600	81650	81700	81750	81800	81850	81900	81950	82000	82050	82100	82150	82200	82250	82300	82350	82400	82450	82500	82550	82600	82650	82700	82750	82800	82850	82900	82950	83000	83050	83100	83150	83200	83250	83300	83350	83400	83450	83500	83550	83600	83650	83700	83750	83800	83850	83900	83950	84000	84050	84100	84150	84200	84250	84300	84350	84400	84450	84500	84550	84600	84650	84700	84750	84800	84850	84900	84950	85000	85050	85100	85150	85200	85250	85300	85350	85400	85450	85500	85550	85600	85650	85700	85750	85800	85850	85900	85950	86000	86050	86100	86150	86200	86250	86300	86350	86400	86450	86500	86550	86600	86650	86700	86750	86800	86850	86900	86950	87000	87050	87100	87150	87200	87250	87300	87350	87400	87450	87500	87550	87600	87650	87700	87750	87800	87850	87900	87950	88000	88050	88100	88150	88200	88250	88300	88350	88400	88450	88500	88550	88600	88650	88700	88750	88800	88850	88900	88950	89000	89050	89100	89150	89200	89250	89300	89350	89400	89450	89500	89550	89600	89650	89700	89750	89800	89850	89900	89950	90000
-------	-------	-------	-------	-------	-------	-------	-------	-------	-------	-------	-------	-------	-------	-------	-------	-------	-------	-------	-------	-------	-------	-------	-------	-------	-------	-------	-------	-------	-------	-------	-------	-------	-------	-------	-------	-------	-------	-------	-------	-------	-------	-------	-------	-------	-------	-------	-------	-------	-------	-------	-------	-------	-------	-------	-------	-------	-------	-------	-------	-------	-------	-------	-------	-------	-------	-------	-------	-------	-------	-------	-------	-------	-------	-------	-------	-------	-------	-------	-------	-------	-------	-------	-------	-------	-------	-------	-------	-------	-------	-------	-------	-------	-------	-------	-------	-------	-------	-------	-------	-------	-------	-------	-------	-------	-------	-------	-------	-------	-------	-------	-------	-------	-------	-------	-------	-------	-------	-------	-------	-------	-------	-------	-------	-------	-------	-------	-------	-------	-------	-------	-------	-------	-------	-------	-------	-------	-------	-------	-------	-------	-------	-------	-------	-------	-------	-------	-------	-------	-------	-------	-------	-------	-------	-------	-------	-------	-------	-------	-------	-------	-------	-------	-------	-------	-------	-------	-------	-------	-------	-------	-------	-------	-------	-------	-------	-------	-------	-------	-------	-------	-------	-------	-------	-------	-------	-------	-------	-------	-------	-------	-------	-------	-------	-------	-------	-------	-------	-------	-------	-------	-------	-------	-------	-------	-------	-------	-------	-------	-------	-------	-------	-------	-------	-------	-------	-------	-------	-------	-------	-------	-------	-------	-------	-------	-------	-------	-------	-------	-------	-------	-------	-------	-------	-------	-------	-------	-------	-------	-------	-------	-------	-------	-------	-------	-------	-------	-------	-------	-------	-------	-------	-------	-------	-------	-------	-------	-------	-------	-------	-------	-------	-------	-------	-------	-------	-------	-------	-------	-------	-------	-------	-------	-------	-------	-------	-------	-------	-------	-------	-------	-------	-------	-------	-------	-------	-------	-------	-------	-------	-------	-------	-------	-------	-------	-------	-------	-------	-------	-------	-------	-------	-------	-------	-------	-------	-------	-------	-------	-------	-------	-------	-------	-------	-------	-------	-------	-------	-------	-------	-------	-------	-------	-------	-------	-------	-------	-------	-------	-------	-------	-------	-------	-------	-------	-------	-------	-------	-------	-------	-------	-------	-------	-------	-------	-------	-------	-------	-------	-------	-------	-------	-------	-------	-------	-------	-------	-------	-------	-------	-------	-------	-------	-------	-------	-------	-------	-------	-------	-------	-------	-------	-------	-------	-------	-------	-------	-------	-------	-------	-------	-------	-------	-------	-------	-------	-------	-------	-------	-------	-------	-------	-------	-------	-------	-------	-------	-------	-------	-------	-------	-------	-------	-------	-------	-------	-------	-------	-------	-------	-------	-------	-------	-------	-------	-------	-------	-------	-------	-------	-------	-------	-------	-------	-------	-------	-------	-------	-------	-------	-------	-------	-------	-------	-------	-------	-------	-------	-------	-------	-------	-------	-------	-------	-------	-------	-------	-------	-------	-------	-------	-------	-------	-------	-------	-------	-------	-------	-------	-------	-------	-------	-------	-------	-------	-------	-------	-------	-------	-------	-------	-------	-------	-------	-------	-------	-------	-------	-------	-------	-------	-------	-------	-------	-------	-------	-------	-------	-------	-------	-------	-------	-------	-------	-------	-------	-------	-------	-------	-------	-------	-------	-------	-------	-------	-------	-------	-------	-------	-------	-------	-------	-------	-------	-------	-------	-------	-------	-------

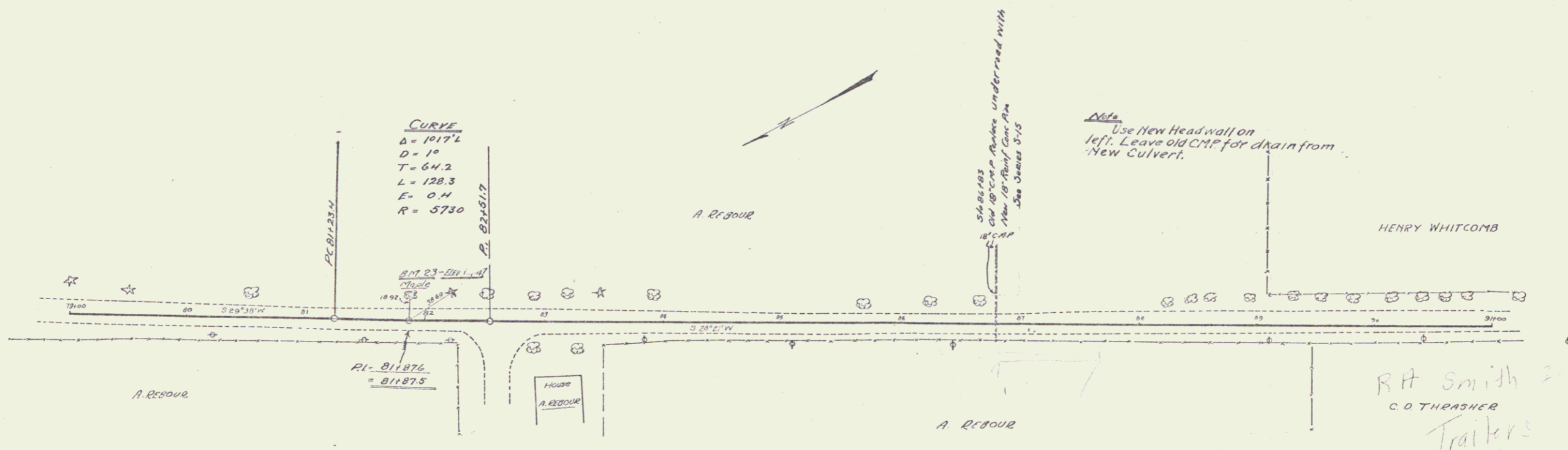
Wood Guard Rail Required
Sta 86171 to 86195 length 24 ft

Cable Guard Rail Required
Left
Sta 86195 to 86220 length 25 ft

New Culverts Required
Sta 86183 18" Rein. Conc. Box Culvert 32
Conc. Class 40-20) 3 3/4" dia
Rein. Steel 33 #4's

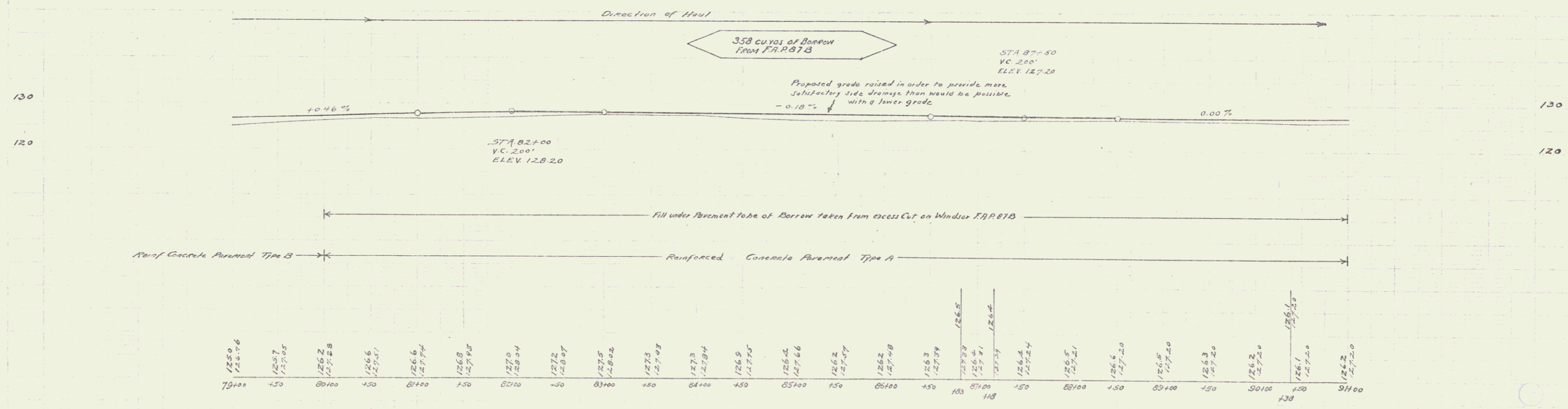
Proj. No.	Sheet No.	Scale	Date	Drawn	Checked
9	11	640	1927	G	32

CURVE
Δ = 1017' L
D = 1°
T = 64.2
L = 128.3
E = 0.4
R = 5730



Note
Use New Head wall on left. Leave old CMP for drain from New Culvert.

RT Smith & Co
C.O. THRESHER
Trailers



S.M. # 23 - 30' Maple Lot of 2nd. 8-1-07 - 811. 127.47 ft.

Series E No 508
Sheet 6 of 32

Wood Guard Rail Required
 Right
 Sta 94+32 to 94+37 length 34 ft
 Sta 102+33 to 102+37 length 24 ft
 Left
 Sta 102+33 to 102+37 length 24 ft
 Sta 94+18 to 94+37 length 24 ft

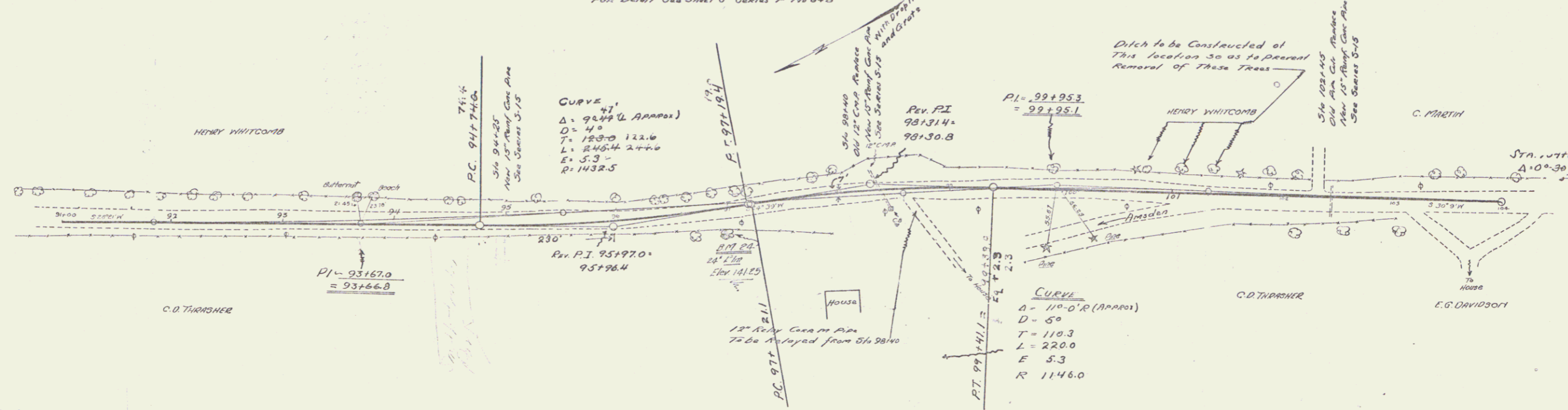
Cable Guard Rail Required
 Left
 Sta 94+18 to 94+37 length 360 ft
 Right
 Sta 94+18 to 94+37 length 24 ft

New Culverts Required
 Sta 94+25 15" Rinf Conc Pipe length 32 ft
 Conc Class A (1-24) (Diameter) 24 ft 2.1
 Rinf Steel 33 lbs
 Sta 98+40 15" Rinf Conc Pipe length 32 ft
 Conc Class A (1-24) (Diameter) 24 ft 2.1
 Rinf Steel 33 lbs
 Sta 102+45 15" Rinf Conc Pipe length 36 ft
 Conc Class B (1-24-5) 2.2 2.4
 Rinf Steel 33 lbs
 Grouted Coprie Gutter
 on Rt driveway 98+75 26 sq yds

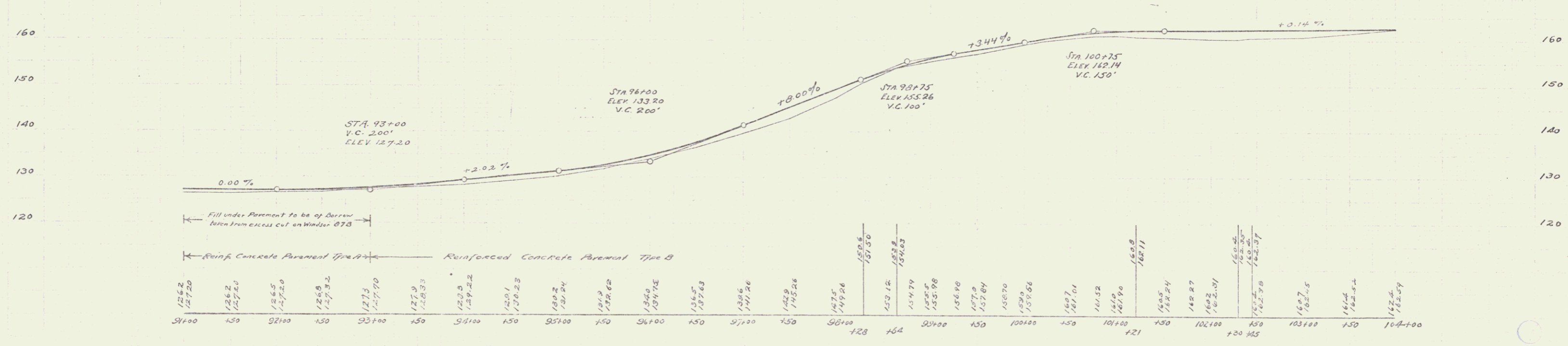
Concrete Retaining Wall Required
 Right
 Sta 97+30 to 98+36 length 70 ft
 Conc Class B (1-24-5) 2.1 2.2
 Rinf Steel 33 lbs 100'
 For Detail See Sheet 3 Series F No 648

Relief Culvert (Drive By) Required
 Sta 102+05 12" Rinf Conc Pipe length 16 ft
 Conc Class B (1-24-5) 2.2 2.4
 Rinf Steel 33 lbs
 To be Relayed with Pipe Taken from Sta 98+40

Proj No	Sheet No	Project Name	Scale	Sheet No	Total Sheets
9	W	648	1927	7	32



Direction of Road
 SEE NOTE
 NOTE - Borrow is to be made from Excess Cut Taken from Windsor F.P. 87B

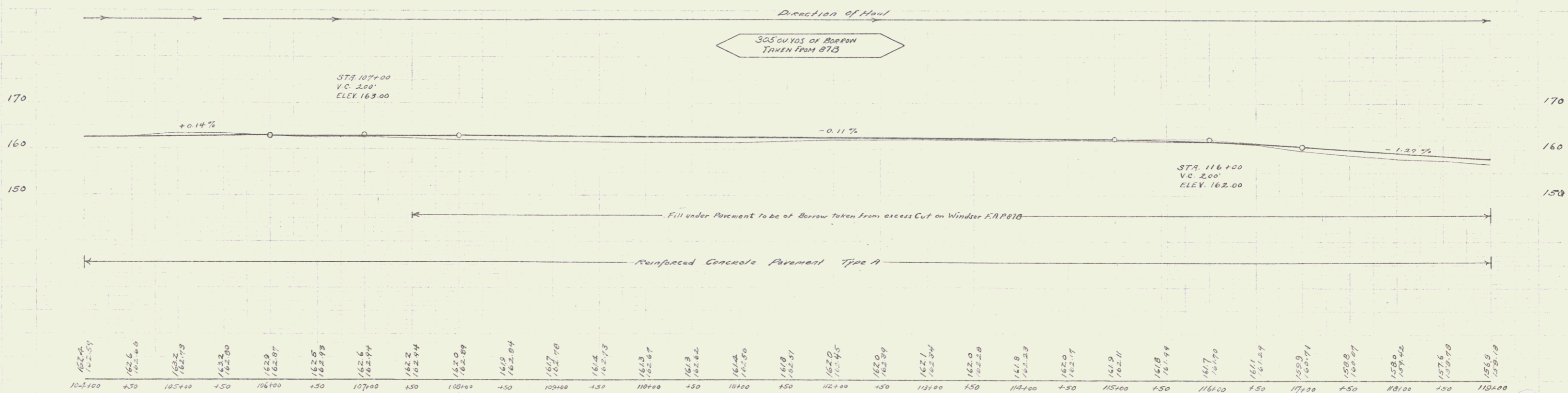
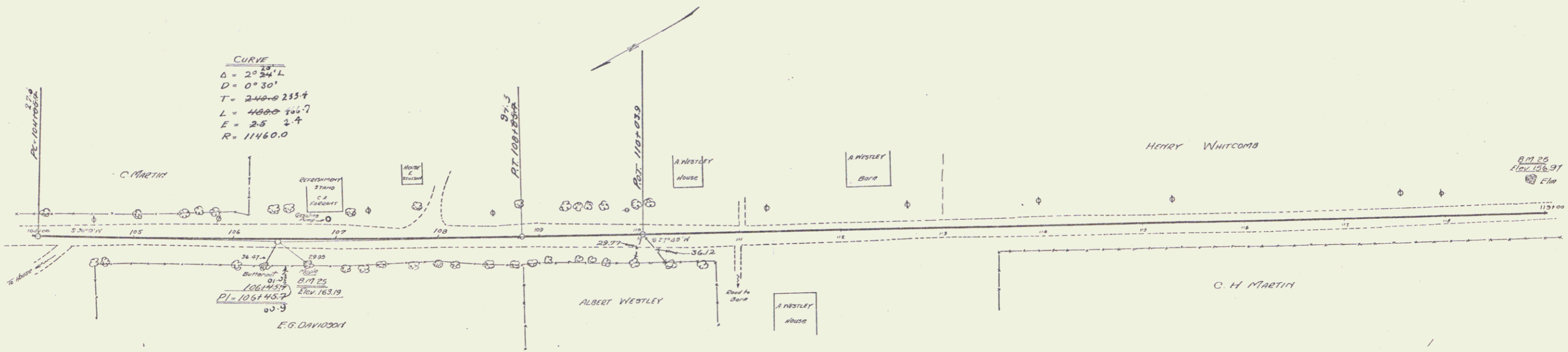


Sta 94+18 to 94+37 Elev 141.25 ft

Driveway Culvert
 104+00 Rt. 28'-12" Cor. N.R.
 Class B Concrete 0.80 CT.

Proj. No.	Sheet No.	Year	Sheet No.	Total Sheets
9	11	1927	8	32

CURVE
 $\Delta = 20^{\circ} 34' L$
 $D = 0^{\circ} 30'$
 $T = 240.0 \pm 233.4$
 $L = 400.0 \pm 361.7$
 $E = 25 \pm 2.7$
 $R = 1160.0$



104+00	104+30	105+00	105+30	106+00	106+30	107+00	107+30	108+00	108+30	109+00	109+30	110+00	110+30	111+00	111+30	112+00	112+30	113+00	113+30	114+00	114+30	115+00	115+30	116+00	116+30	117+00	117+30	118+00	118+30	119+00
165.4	162.6	162.2	162.2	162.9	162.5	162.6	162.2	162.0	161.8	161.4	161.2	161.0	160.8	160.6	160.4	160.2	160.0	159.8	159.6	159.4	159.2	159.0	158.8	158.6	158.4	158.2	158.0	157.8	157.6	157.4

3" x 25' - 30" Maple PI of STA 106+70 - ELEV. 163.19 ft.
 B.M. # 25 - 30" Iron Left - 110+07 - ELEV. 160.91 ft.

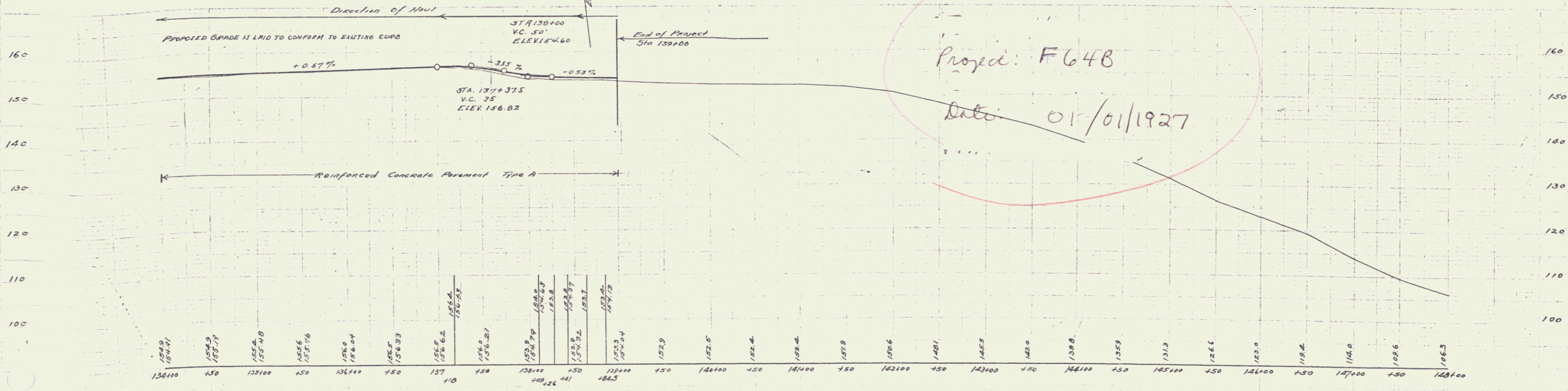
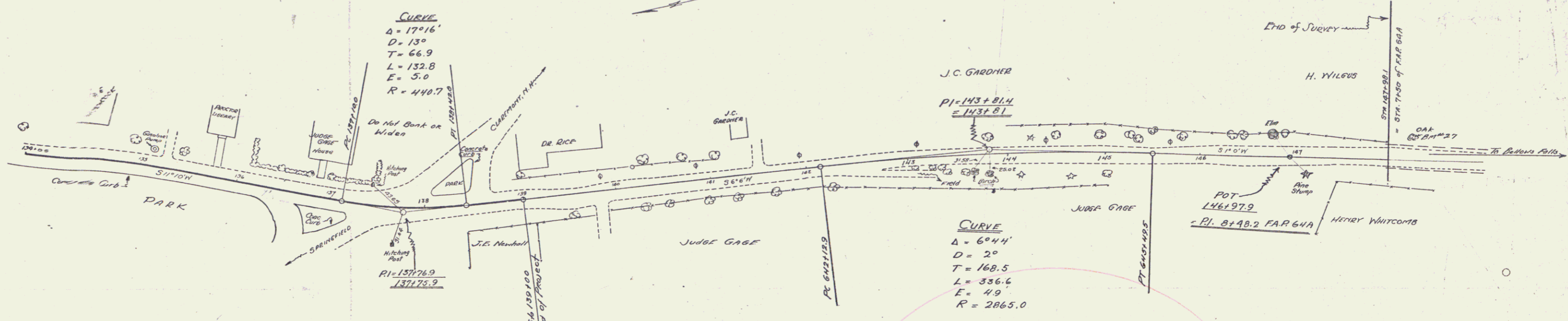
Series F No 648
 Sheet 11 of 32

6

Proj. No.	Sheet No.	Total Sheets
9	10	32

Grouted Cobble Gutter for Driveway
135+25 Lt. 14 Sq. Yds.
Drainage Tile
138+00 - 142+55 Lt.
390' 10" Ungrouted Clay Tile
Two Catch Basins and Outlet Flow
Concrete Class II 5.2 c.y.
Reinforced Steel 271 lbs.
Two Drop Inlet Grates.

Double Bituminous Surface Treatment
132+30 - 137+30 Rt. - 167 Sq. Yds.



Proped: F648
Date: 01/01/1927

B.M. #28 Rt. 5/4 148+25 Evt. Elev 103.83

SERIES F No. 648
Sheet 10 of 32