

Wood Guard Rail Required

Sta 65180 to 66175	length	24 ft
" 65185 " 66180	"	24 "
" 73156 " 73180	"	24 "
" 76168 " 76194	"	24 "
" 78150 " 78150	"	0 "
Sta 65180 to 66175	length	24 ft
" 65185 " 66185	"	24 "
" 65 " 87		

Cable Guard Rail Required

Sta 73138 to 73200	length	344 ft
" 76152 " 76152	"	320 "
" 77155 " 77155	"	275 "

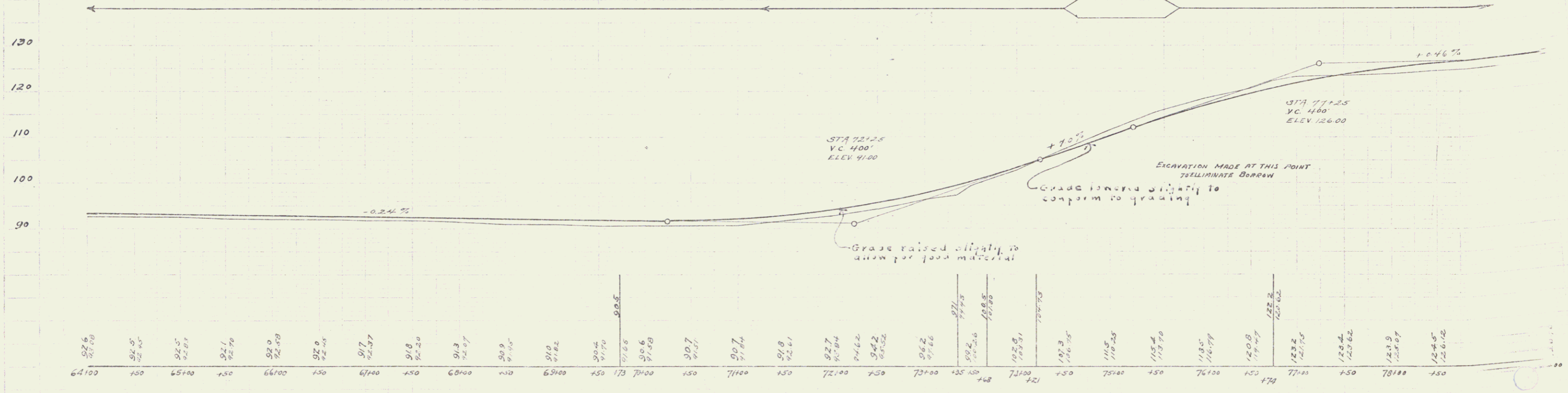
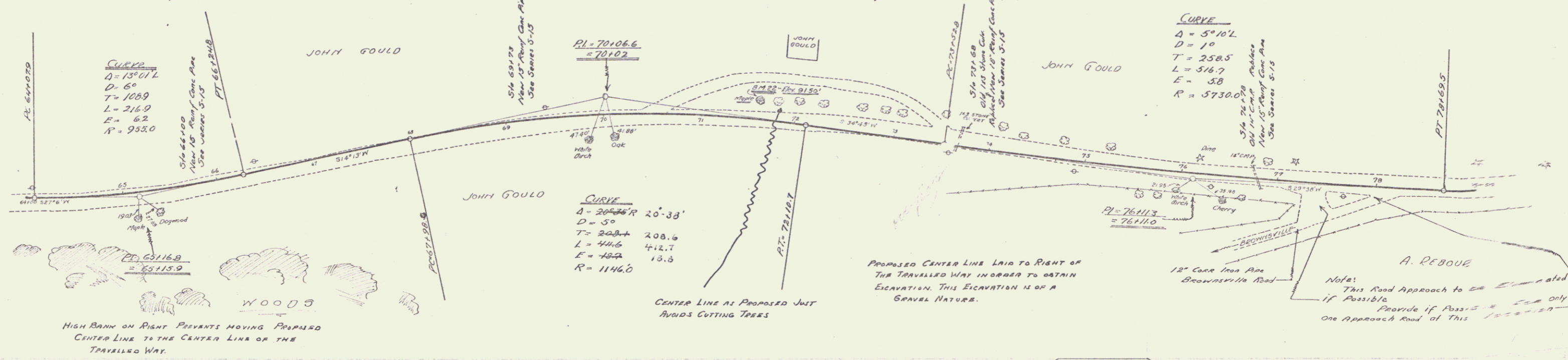
New Culverts Required

Sta 66108-315	15" Reinf. Conc. Pipe length 38 ft	1424 lb
Conc. Class B(1-25-3)		13330 lbs
Reinf. Steel		1124 lb
Sta 69173	15" Reinf. Conc. Pipe length 32 ft	1124 lb
Conc. Class B(1-25-3)		10330 lbs
Reinf. Steel		894 lb
Sta 73168	15" Reinf. Conc. Pipe length 36 ft	1272 lb
Conc. Class B(1-25-3)		11810 lbs
Reinf. Steel		1000 lb
Sta 76178	15" Reinf. Conc. Pipe length 32 ft	1124 lb
Conc. Class B(1-25-3)		10330 lbs
Reinf. Steel		894 lb

New Drivng Way Culvert Required

Sta 771702	12" Conc. Iron Pipe length 16 ft	154 lbs
Conc. Class B(1-25-3)		1390 lbs
Reinf. Steel		33 lbs

Proj. No.	Sheet No.	Proj. No.	Sheet No.
9	48	1927	3



Profile 1927 - 0911 W.C. to 1927 W.C. to 1927 W.C.