

INDEX OF SHEETS

SHEET NO.	1	TITLE PAGE
	2	TYPICAL CROSS-SECTION OF IMPROVEMENT
	3	BANKING AND WIDENING TABLES
	4	PLAN AND PROFILE

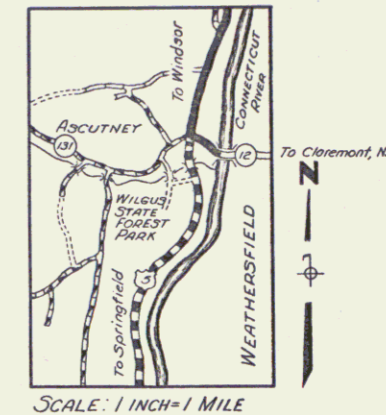
FED. ROAD DIST. NO.	STATE	FED. AID PROJ. NO.	FISCAL YEAR	SHEET NO.	TOTAL SHEETS
9	VT.				

STATE OF VERMONT
STATE HIGHWAY DEPARTMENT

PLAN AND PROFILE OF PROPOSED
STATE HIGHWAY
FEDERAL AID PROJECT

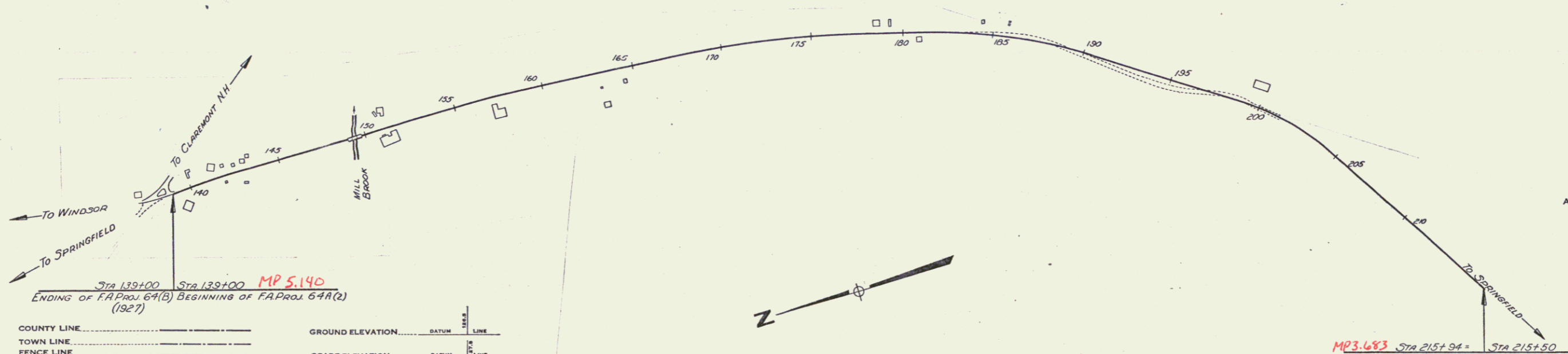
TOWN OF WEATHERSFIELD
ROUTE U.S. 5

CONNECTICUT RIVER ROAD
BEGINNING AT THE INTERSECTION OF VT. ROUTE 12 AND U.S. ROUTE 5
IN WEATHERSFIELD AND EXTENDING SOUTHERLY



NO. 6.11
HIGHWAY DIVISION
NORTH
FILE
PERPETUAL
FORM OF
U.S.
(not to be returned to R.O.M. Division)

Project: FAP 64A(2)
Pin # 990 336



Sta 135+00 Sta 135+00 MP 5.140
ENDING OF F.A. PROJ. 64A(B) BEGINNING OF F.A. PROJ. 64A(2)
(1927)

- COUNTY LINE
- TOWN LINE
- FENCE LINE
- STONE WALL
- UNFENCED PROPERTY
- GUARD RAIL
- TRAVELED WAY
- RAILROAD
- RETAINING WALL
- CENTER LINE
- SURVEY LINE
- CULVERT
- DROP INLET
- TROLLEY POLE
- POWER POLE
- TELEPHONE POLE
- TREES
- HEDGE

GROUND ELEVATION DATUM LINE
GRADE ELEVATION DATUM LINE

- CURVE DATA
- DEFLECTION ANGLE.....Δ
 - DEGREE OF CURVE.....D
 - RADIUS OF CURVE.....R
 - TANGENT DISTANCE.....T
 - LENGTH OF CURVE.....L
 - EXTERNAL DISTANCE.....E
 - POINT OF INTERSECTION.....P. I.
 - POINT OF CURVE.....P. C.
 - POINT OF TANGENT.....P. T.
 - POINT ON TANGENT.....P. O. T.

- SCALES
- TITLE 1" = 1"
 - TYPICAL 1" = 1"
 - PLAN 1" = 100'
 - PROFILE HORIZONTAL 1" = 100'
 - PROFILE VERTICAL 1" = 10'
 - CROSS SECTIONS 1" = 10'



THESE PLANS ARE SUBJECT TO SUCH REVISIONS AS MAY BE REQUIRED BY THE PUBLIC ROADS ADMINISTRATION OR THE COMMISSIONER OF HIGHWAYS.
CONSTRUCTION IS TO BE CARRIED ON IN ACCORDANCE WITH THE PLANS AND THE STANDARD ROAD AND BRIDGE SPECIFICATIONS OF 1936, AS APPROVED DECEMBER 29TH, 1936 BY THE PUBLIC ROADS ADMINISTRATION, INCLUDING ALL SUBSEQUENT APPROVED REVISIONS AND SUCH REVISED SPECIFICATIONS AND SPECIAL PROVISIONS AS ARE SUBMITTED WITH THE PLANS.

APPROVED	APPROVED	SERIES F NO.	FILED
ROAD ENGINEER	DISTRICT HIGHWAY COMMISSIONER	SHEET 1 OF	

10/1/40

24(A 2)

INDEX OF SHEETS

SHEET NO. 1	TITLE PAGE
2	TYPICAL CROSS-SECTION OF IMPROVEMENT
3	BANKING AND WIDENING TABLES
4	PLAN AND PROFILE

FED. ROAD DIST. NO.	STATE	FED. AID PROJ. NO.	FISCAL YEAR	SHEET NO.	TOTAL SHEETS
9	Vt.				

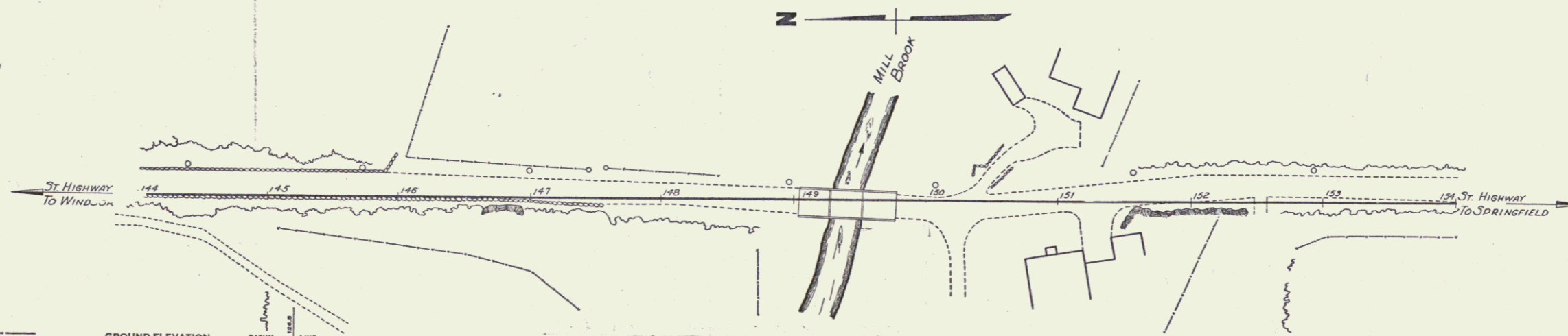
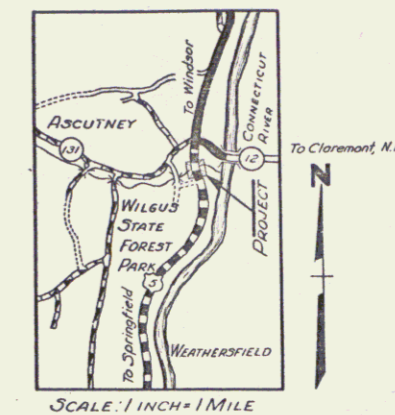
STATE OF VERMONT
STATE HIGHWAY DEPARTMENT

PLAN AND PROFILE OF PROPOSED
STATE HIGHWAY
FEDERAL AID PROJECT

TOWN OF WEATHERSFIELD
ROUTE U.S. 5
CONNECTICUT RIVER ROAD

BEGINNING AT A POINT 900 FT. SOUTHERLY FROM THE INTERSECTION OF VT. ROUTE 12 AND U.S. ROUTE 5 IN WEATHERSFIELD AND EXTENDING SOUTHERLY 190 FT.

LENGTH OF PROJECT 190 FEET = 0.04 MILES



GROUND ELEVATION..... DATUM..... LINE.....
GRADE ELEVATION..... DATUM..... LINE.....

CURVE DATA

DEFLECTION ANGLE.....	Δ
DEGREE OF CURVE.....	D.
RADIUS OF CURVE.....	R.
TANGENT DISTANCE.....	T.
LENGTH OF CURVE.....	L.
EXTERNAL DISTANCE.....	E.
POINT OF INTERSECTION.....	P. I.
POINT OF CURVE.....	P. C.
POINT OF TANGENT.....	P. T.
POINT ON TANGENT.....	P. O. T.

SCALES

TITLE	1" = 30'
TYPICAL	1" = 2'
PLAN	1" = 30'
PROFILE HORIZONTAL	1" = 30'
PROFILE VERTICAL	1" = 10'
CROSS SECTIONS	1" = 5'

CONCRETE T BEAM BRIDGE
LENGTH OVERALL 750'
ROADWAY 210'

THESE PLANS ARE SUBJECT TO SUCH REVISIONS AS MAY BE REQUIRED BY THE PUBLIC ROADS ADMINISTRATION OR THE COMMISSIONER OF HIGHWAYS.
CONSTRUCTION IS TO BE CARRIED ON IN ACCORDANCE WITH THE PLANS AND THE STANDARD ROAD AND BRIDGE SPECIFICATIONS OF 1936, AS APPROVED DECEMBER 29TH, 1936 BY THE PUBLIC ROADS ADMINISTRATION, INCLUDING ALL SUBSEQUENT APPROVED REVISIONS AND SUCH REVISED SPECIFICATIONS AND SPECIAL PROVISIONS AS ARE SUBMITTED WITH THE PLANS.

APPROVED: _____

COMMISSIONER OF HIGHWAYS
SUBMITTED BY ORDER OF THE STATE HIGHWAY BOARD

RECOMMENDED FOR APPROVAL

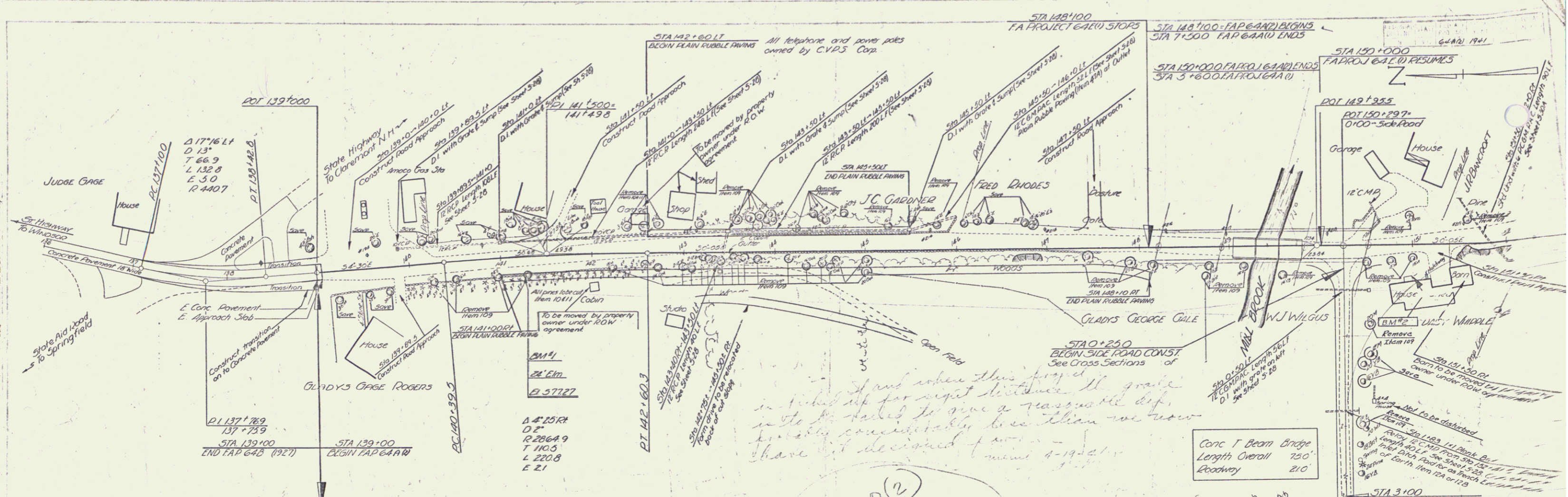
DISTRICT ENGINEER
PUBLIC ROADS ADMINISTRATION
FEDERAL WORKS AGENCY

APPROVED

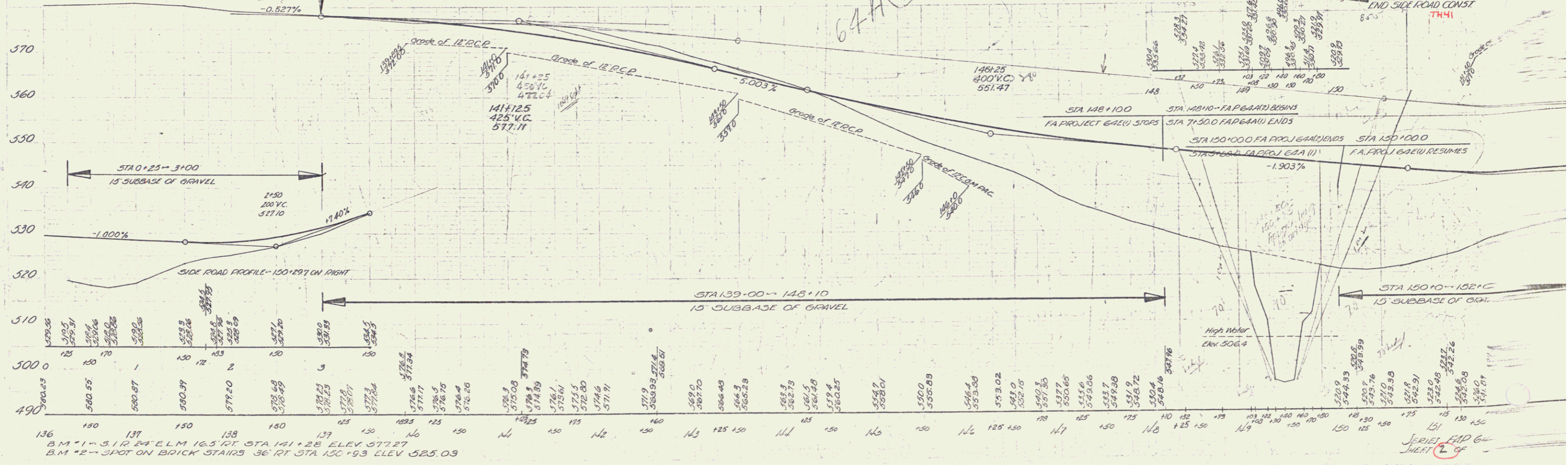
COMMISSIONER OF
PUBLIC ROADS ADMINISTRATION
FEDERAL WORKS AGENCY

APPROVED	APPROVED	SERIES F No.	FILED
ROAD ENGINEER	DISTRICT HIGHWAY COMMISSIONER	SHEET (1A) OF	

E. Brown
 L. Lowry
 4/14/40

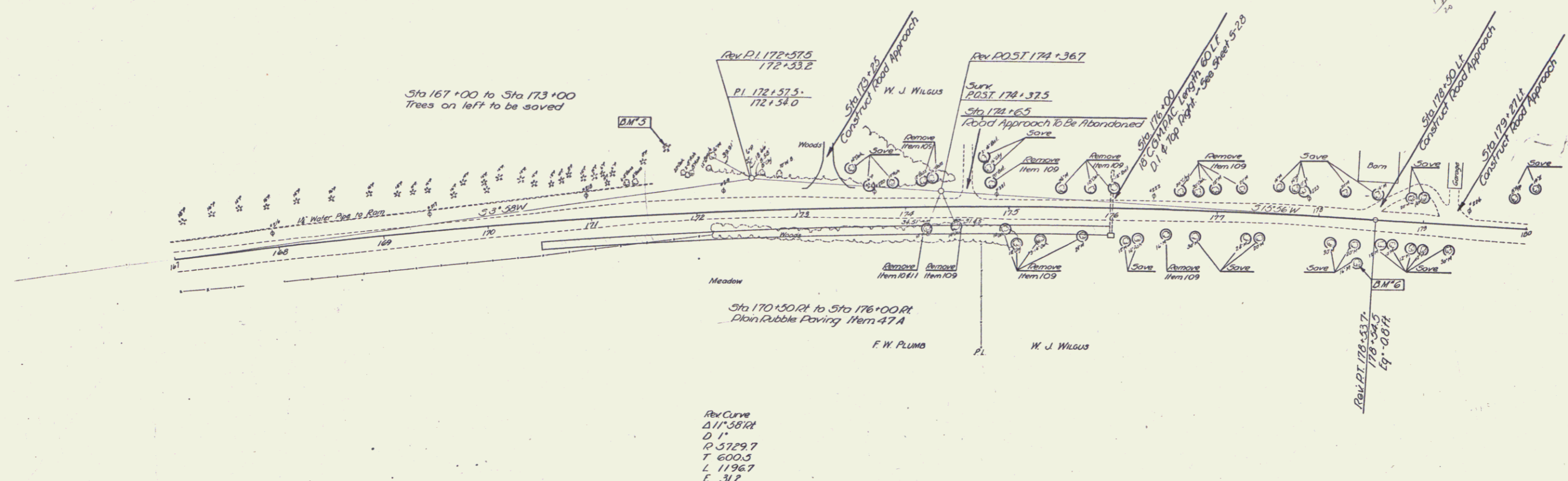


I had when this project
 in mind for a right of way
 to be taken to give a reasonable dip
 probably considerably less than we now
 have. I decided to... 4-19-40

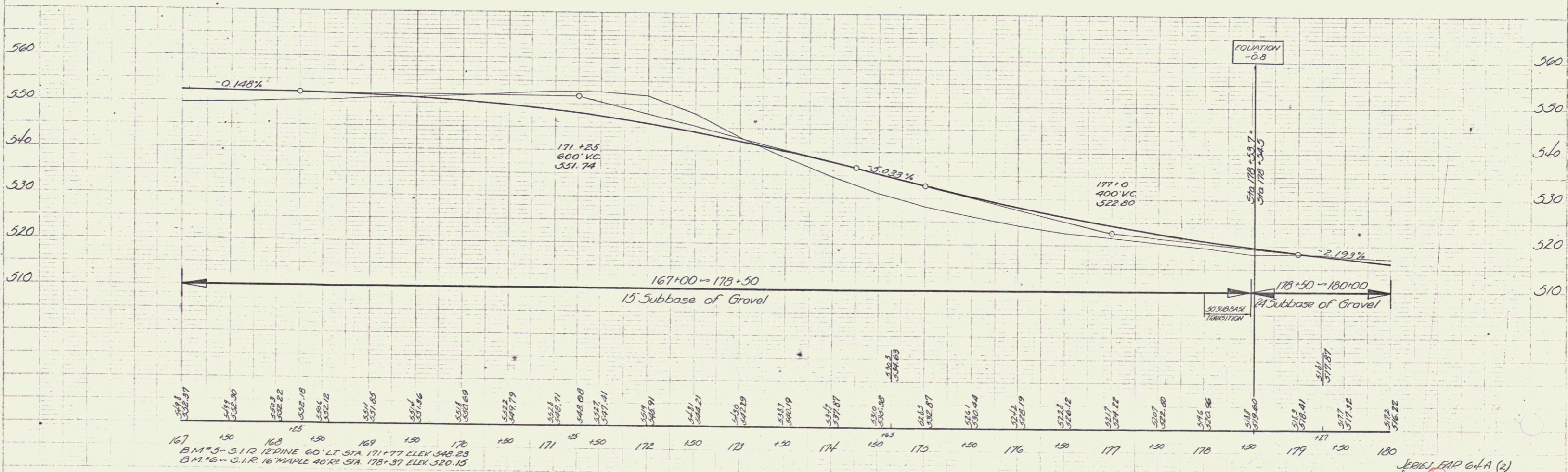


B.M. 1 - 3.12 24' ELM 16.5' HT STA 141+25 ELEV. 577.27
 B.M. 2 - SPOT ON BRICK STAIRS 36' RT STA 150+93 ELEV. 525.03

SERIES FAP 64A
 SHEET 1 OF 2



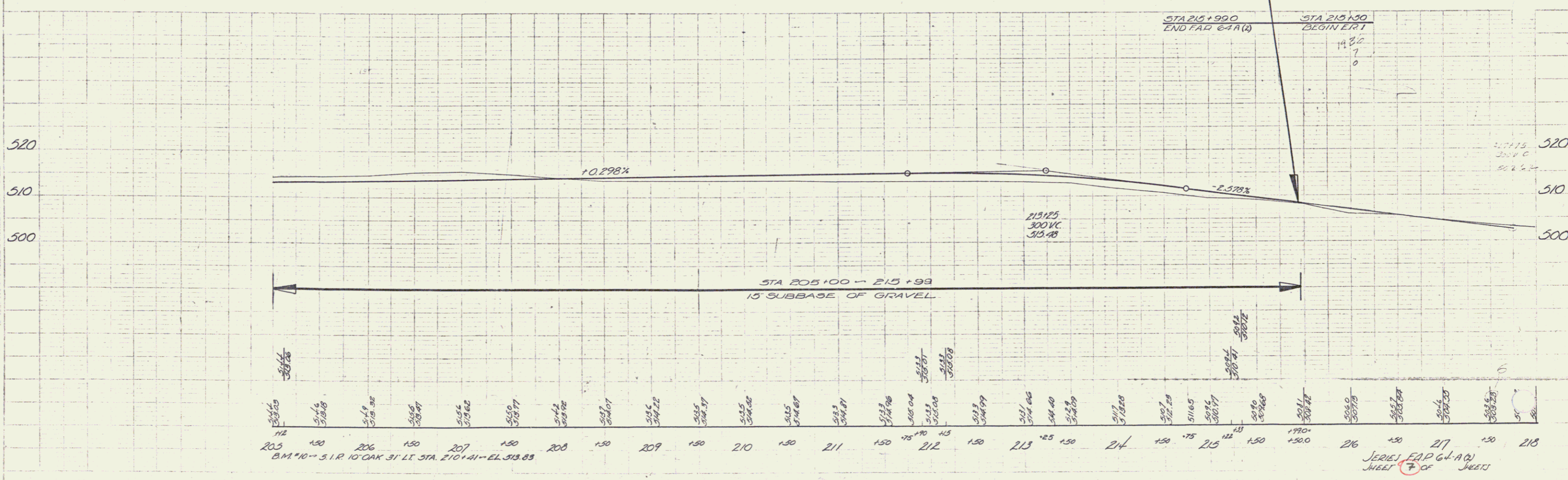
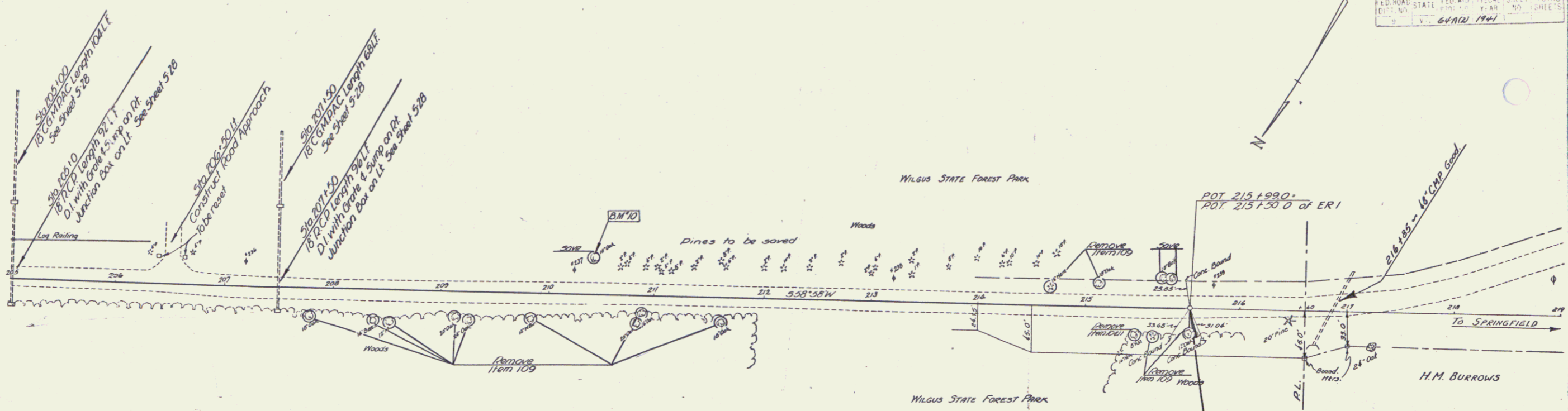
Rev Curve
 411'38" R
 D 11'
 P 5729.7
 T 600.5
 L 1196.7
 E 312



167 530.31
 168 532.30
 169 532.22
 170 532.18
 171 532.12
 172 531.85
 173 531.46
 174 530.69
 175 529.79
 176 528.71
 177 527.41
 178 525.91
 179 524.21
 180 522.29
 181 520.19
 182 517.87
 183 515.38
 184 512.87
 185 510.44
 186 508.19
 187 506.12
 188 504.22
 189 502.40
 190 500.86
 191 499.60
 192 498.41
 193 497.32
 194 496.22

B.M. 3 - S. 1/2 12" PINE 60' LT STA 171+77 ELEV 549.23
 B.M. 6 - S. 1/2 16" MAPLE 40' RT STA 178+87 ELEV 520.15

JESSE EAP 64-A (2)
 SHEET 4 of SHEETS
 3



PLAN	120 A 3
DATE	10-16
BY	F. BURRILL
CHECKED	
APPROVED	

F. BURRILL 10-16

SERIES EAP 64-A(2) SHEET 7 OF 7