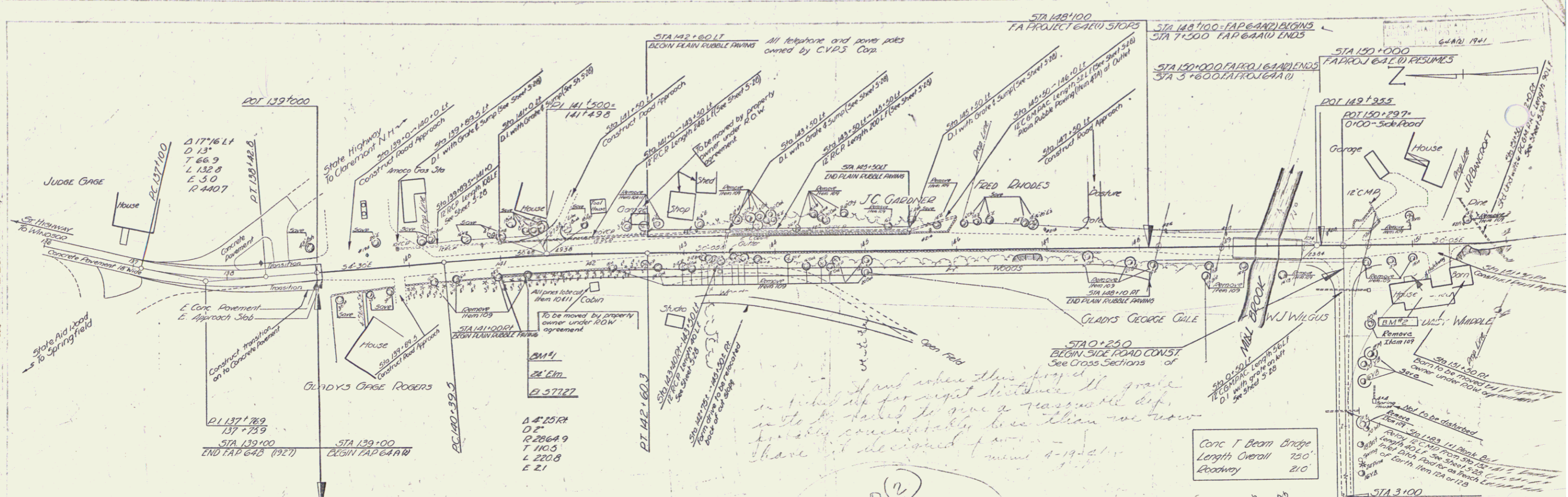
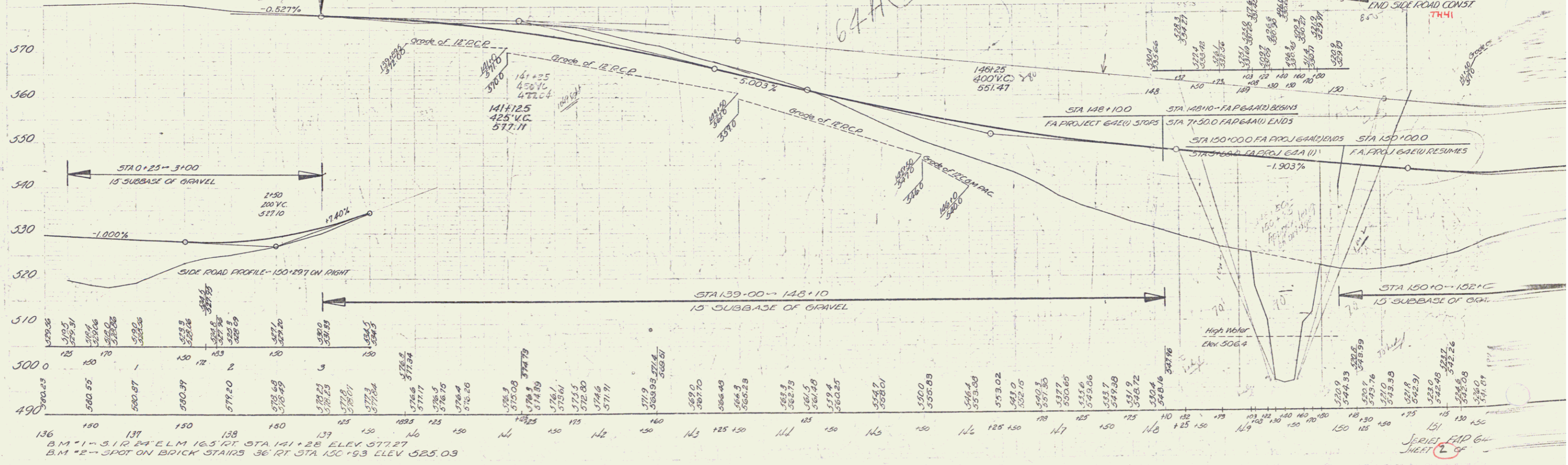


E. Brown  
 L. Lowry  
 4/14/40



I had when this project  
 in mind for a slight dip  
 in the road to give a reasonable dip  
 probably considerably less than we now  
 have. I decided to... 4-19-40



B.M. 1 - 3.12 24' ELM 16.5' HT STA 141+28 ELEV. 577.27  
 B.M. 2 - SPOT ON BRICK STAIRS 36' RT STA 150+93 ELEV. 525.03

SERIES FAP 64A  
 SHEET 1 OF 2